

1 Shakespeare Close, Milton, Stoke on Trent, ST2 7QG £195,000 Asking Price

IDEAL FIRST TIME BUYER/YOUNG FAMILY. This "SHOW HOME" presented two bedroom detached house has been transformed by the current vendors. Boasting a SPACIOUS, STUNNING MODERN FITTED KITCHEN. Located in the popular residential area of MILTON on a generous CORNER PLOT backing onto the canal, offering a VERY GOOD DEGREE OF PRIVACY. Close to LOCAL AMENITIES, SCHOOLS and COMMUTER LINKS. Property briefly comprises of:- Entrance hall, utility/cloakroom, lounge, kitchen, two bedrooms and a family bathroom. Externally:- OFF ROAD PARKING, rear garden with raised decking.

Ideal FTB/young family
Immaculately presented two bedroom detached house

Located in the popular Milton area
Generous corner plot

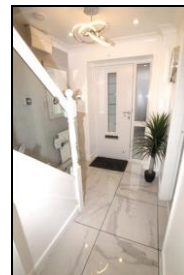
Stunning spacious kitchen

Backing onto the canal, off road parking
Rear garden with raised decking area

Close to local shops, schools and
commuter links

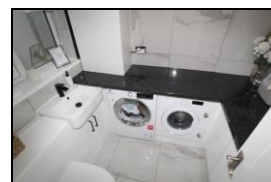
Entrance Hall

Enter the property via the composite front door with side frosted window into the welcoming hallway. Radiator and polished tile floor.



Utility\Cloakroom Room 1.20m (3' 11") x 2.32m (7' 7")

White high gloss base units with roll top work surface over, plumbing for a washing machine and space for a tumble dryer. Inset wash/hand basin over a fixed vanity unit along with a close coupled WC. Vertical ladder style radiator and polished tile floor covering. UPVC window to the front aspect. The gas central heating boiler is mounted in a matching wall unit.



Lounge 4.09m (13' 5") x 3.87m (12' 8")

UPVC French doors to the rear garden ensure good natural light. Carpet, wall light, radiator and useful under stairs storage.



Kitchen 2.49m (8' 2") x 4.69m (15' 5")

Stunning modern fitted dark grey kitchen with marble effect work surface. Integrated electric oven, microwave, fridge, freezer, and dishwasher. Four ring induction hob and stainless steel inset sink. Tiled splash backs and beautiful polished tile floor covering. UPVC window to the front aspect benefits from Venetian blinds. UPVC half glazed exit door to the rear garden.



Kitchen



Stairs/Landing

Carpeted stairs lead from the hallway to the carpeted first floor. Airing cupboard houses the hot water tank and storage. Access from the carpeted landing to the insulated loft space.

Master Bedroom 4.15m (13' 7") x 2.82m (9' 3") max

UPVC window to the rear aspect. Carpet, radiator and fitted mirror wardrobes and drawers.



Master Bedroom



Bedroom 2 2.10m (6' 11") x 3.23m (10' 7") max

UPVC window with Venetian blinds to the front aspect. Carpet, radiator and floor to ceiling double fitted wardrobes.

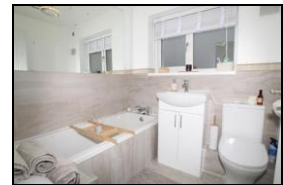


Bedroom 2



Family Bathroom 1.89m (6' 2") x 1.70m (5' 7")

White fitted modern bathroom suite. Panelled bath, inset wash/hand basin over a fixed vanity unit along with a close coupled WC. Chrome ladder style towel heater, tiled splash backs, tiled floor covering and extractor fan. UPVC window with frosted glazing and Venetian blinds to the front aspect.



Rear Garden

Step out onto the decked patio area which has access to the wooden storage shed. The next tier is laid to lawn with a lower tier suitable for al-fresco dining with decking and includes external power point. Very generous garden to suit all needs.



Rear Garden

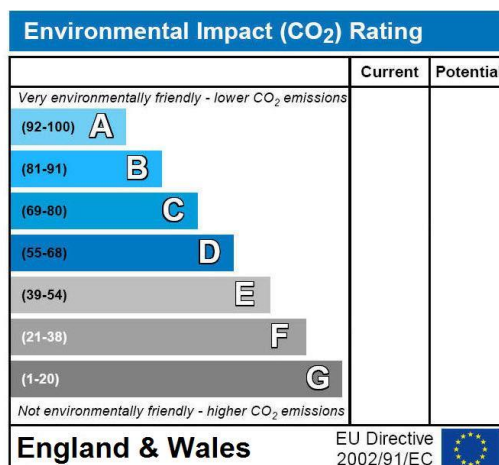
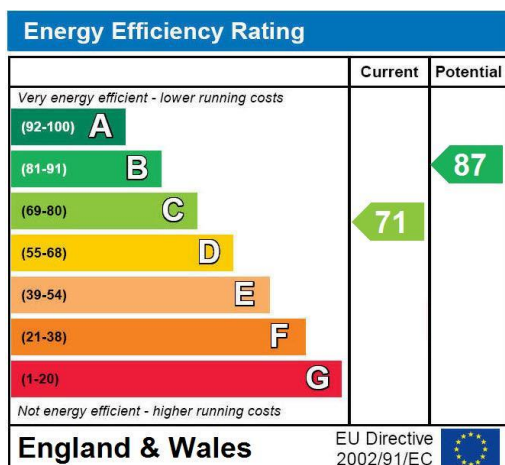


Front Garden

External tap. Decorative chippings for off road parking.

Property Ref: OPNY000842

Energy Performance Certificates



Tenure: We await confirmation from the vendors solicitors.

Services: Please note, no tests have been made on services, equipment or fittings. Purchasers are advised to satisfy themselves as to their availability and condition.

All measurements are taken electronically and whilst every care is taken with their accuracy they must be considered approximate and should not be relied upon when purchasing carpets or furniture.

Floor plans are not to scale and are for illustration purposes only.

No responsibility is taken for any error omission or misunderstanding.

Viewing strictly by appointment.