



# lordsons

4 Bedroom Terraced for Sale - **Offers in Region of £490,000**

Westminster Drive, Westcliff On Sea, Essex, SS0 9SF



## Key Features

- Investment Opportunity • Buy To Let • HMO Style / Air BnB Potential • Tenants in Situ / Immediate Yield • C2C service into London Fenchurch St • Four Bedrooms & Four Bathrooms • Chalkwell Park & Seafront Nearby • Several Local Amenities • Walking Distance to Southend Hospital

## Description

\*\*\*\*\* Investment Opportunity \*\*\*\*\*

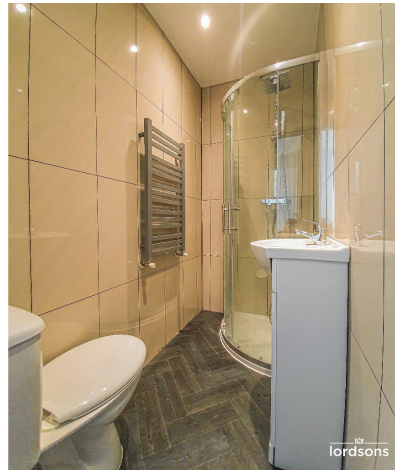
Lordsons have an exciting opportunity for investors with a fresh to market HMO / Air BnB style property. Tenants in situ and happy to remain. This property has been well looked after and offers an immediate yield potential.

This terraced property has been converted to ground floor and first floor accommodation. Ground floor offers two double bedrooms, both with their own private en-suite three-piece bathroom. The ground floor has one large kitchen, shared by all tenants. First floor has another two double bedrooms and two bathrooms with three piece suite.

Large shared garden.

This property is based in a sought after location in Westcliff on sea with easy access into London Fenchurch Street C2C as well as walking distance from Southend Hospital. There are several local amenities including Chalkwell Park, Southend City Seafront, Westcliff Lawn & Tennis Club as well as a wide variety of shops and restaurants. Easy access to several transport links and road connections to A13 and A127.

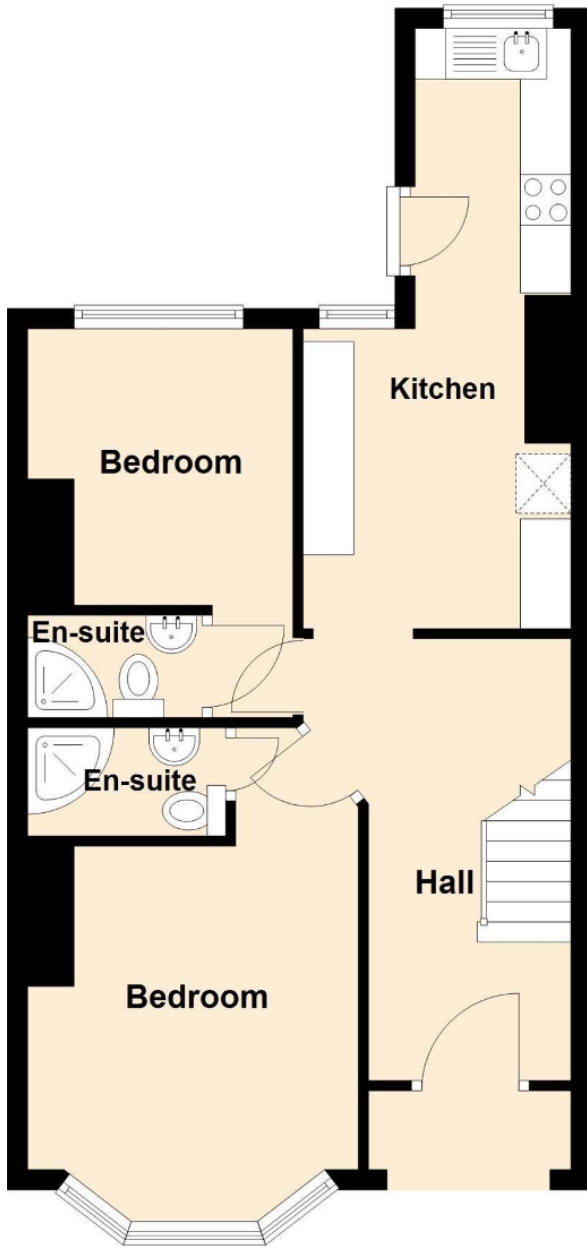
This is a not to be missed opportunity for investors and developers. Immediate return on investment. Open House to be held, Saturday 10th September. Call to arrange your viewing.





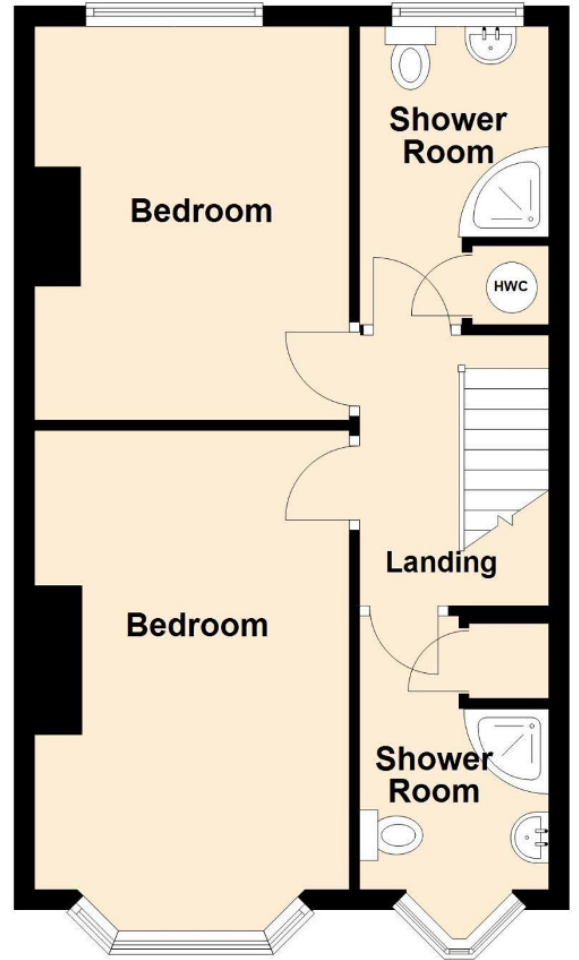
### Ground Floor

Approx. 50.1 sq. metres (539.5 sq. feet)



### First Floor

Approx. 44.1 sq. metres (474.7 sq. feet)



Total area: approx. 94.2 sq. metres (1014.2 sq. feet)