

77 Goldhawk Road, Shepherd's Bush, London W12 8EH

Kerr&co



Scotts Road, London W12

A purpose built two bedroom flat providing 695 sq ft of accommodation, set on the ground floor, benefitting from it's own private entrance, off street parking and a private garden.

This well-presented, spacious flat offers a bright reception room with a separate kitchen, two bedrooms, and a large bathroom. Benefiting from a private garden, generous storage, and a private entrance and a private off street parking space. Situated in the heart of Shepherd's Bush, the property benefits from excellent transport links, being within walking distance from Goldhawk Road, Shepherd's Bush, and Hammersmith stations (Hammersmith & City, Central, Circle, District, Mildmay and Piccadilly lines), as well as being in easy reach to the extensive shopping and leisure amenities of Westfield shopping complex, including John Lewis and the exclusive SoHo House private members' club.

Asking Price: £515,000 Leasehold

020 8743 1166
sales@kerrandco.com

020 8743 4332
lettings@kerrandco.com

www.kerrandco.com





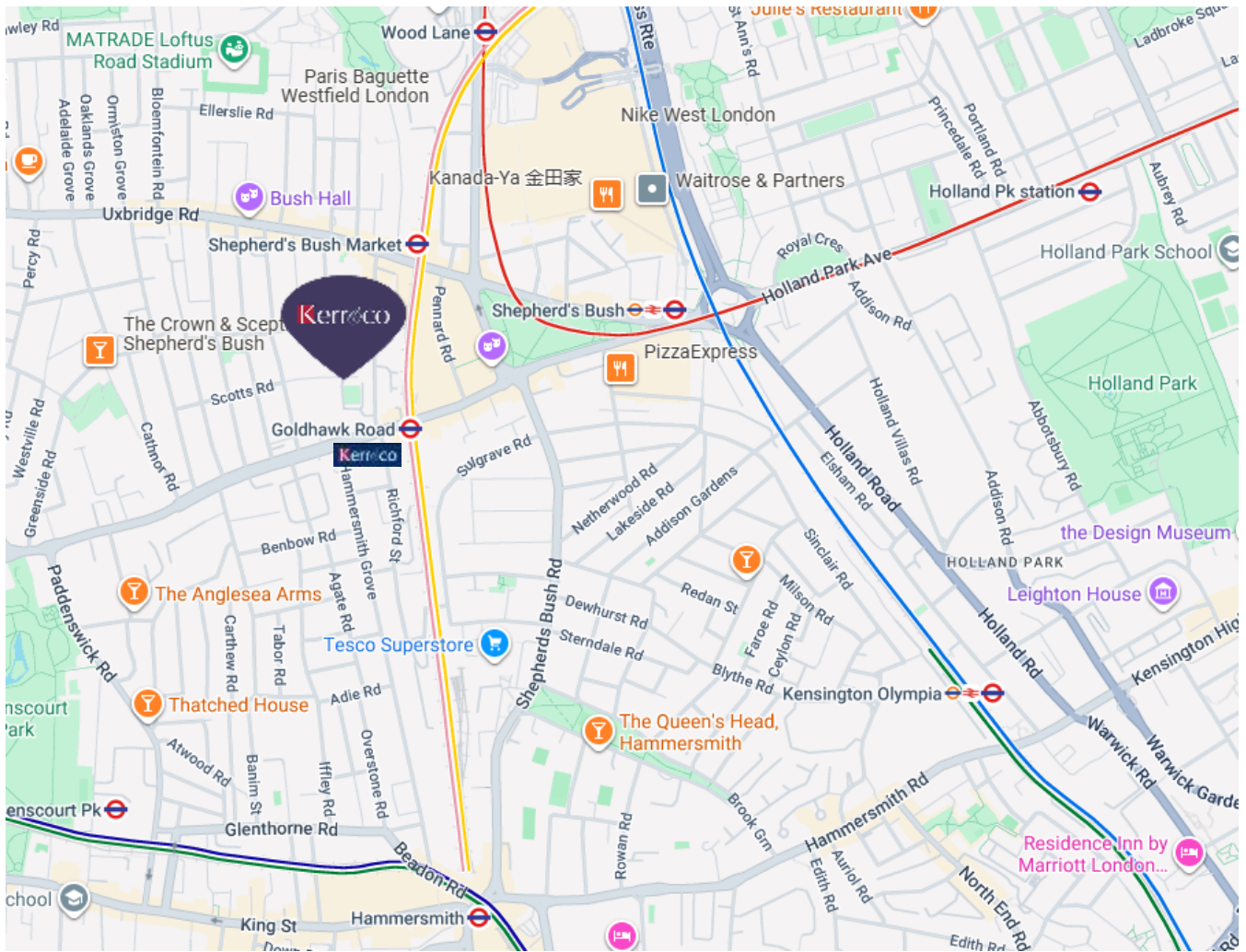
Scotts Road, London W12 8HP

Purpose built two bedroom garden flat
Bright reception room.
Separate kitchen.
Private patio garden.
Spacious Bathroom.
Off street parking space.
Private entrance.

Well located for ease of access to Goldhawk Road,
Shepherd's Bush and Hammersmith underground
stations (Central, Circle, Hammersmith & City,
District and Piccadilly lines).

Short walk from shopping amenities in the well
renowned Westfield shopping complex.





Score	Energy rating	Current	Potential
92+	A		
81-91	B		
69-80	C	74 C	79 C
55-68	D		
39-54	E		
21-38	F		
1-20	G		

The graph shows the current energy efficiency of your home. The higher the rating the lower your fuel bills are likely to be. The potential rating shows the effect of undertaking the recommendations on page 3.

The average energy efficiency rating for a dwelling in England and Wales is band D (rating 60).

The EPC rating shown here is based on standard assumptions about occupancy and energy use and may not reflect how energy is consumed by individual occupants.

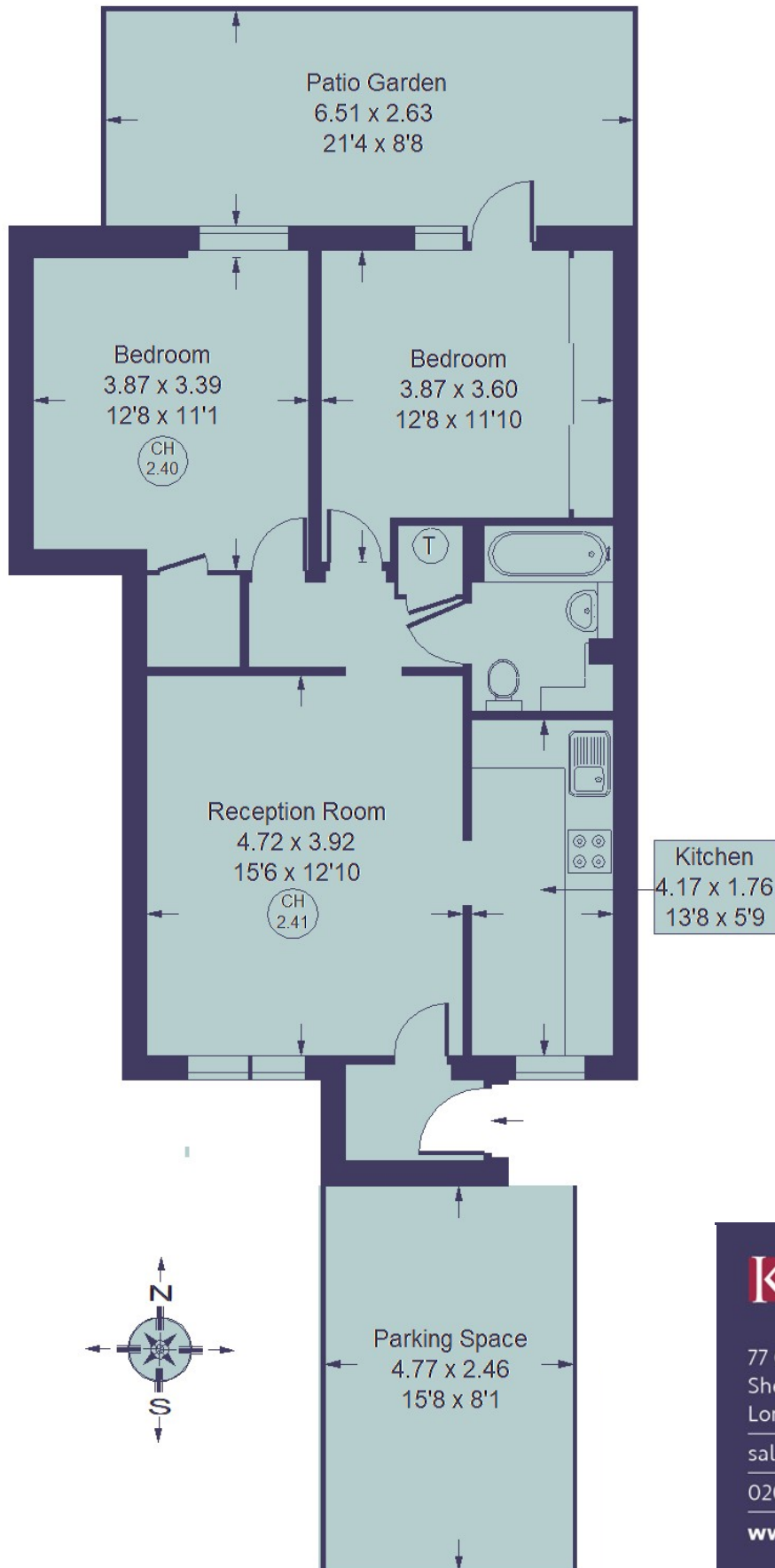
Tenure:	Leasehold with 189 years from 24/08/1988 (151 years remaining)
Service Charge and Ground Rent:	£1932 and peppercorn
Service charge covers	Building insurance, communal electricity and repairs and maintenance to communal areas
Local Authority:	London Borough of Hammersmith & Fulham
Council Tax:	Band D (£1386.77 for current financial year 24/25)
Parking:	Eligible for a L.B.H.F. residents parking permit
Accessibility:	Steps down to front doors
Connected services / utilities:	Mains water and drainage, gas, electricity, telephone and broadband (both fibre and cable available locally).
Heating:	Gas central heating via radiators
Flood risk:	Ask agent

Scotts Road W12 8HP

Asking Price: **£515,000**

Two bedroom purpose built garden flat

Approximate gross internal floor area: **695 Sq. Ft./ 64.6 Sq. M.**



Kerr & Co

77 Goldhawk Road
Shepherd's Bush
London W12 8EH

sales@kerrandco.com

020 8743 1166

www.kerrandco.com

Whilst these particulars and measurements are believed to be correct they are not guaranteed by the vendors or the vendors agents and they do not form part of any contract. Whilst every effort is made to ensure the accuracy of these details, it should be noted that any measurements are approximate only, measurements of doors, windows, rooms and any other item are approximate and no responsibility is taken for any error, omissions or mis-statements. All measurements are taken from the widest points of the room and include bay windows. Any internal photographs are intended as a guide only and it should not be assumed that any of the furniture/ fittings are included in any sale. Where shown, details of lease, ground rent and service charge are provided by the vendor and their accuracy cannot be guaranteed, further checks should be made either through your solicitor/ conveyancer. Wiring, plumbing or appliances have not been tested and should not be assumed to be in working order.