



FOUNDATION

01227 752617

[sales@foundationstateagents.co.uk](mailto:sales@foundationstateagents.co.uk)

[www.foundationstateagents.co.uk](http://www.foundationstateagents.co.uk)

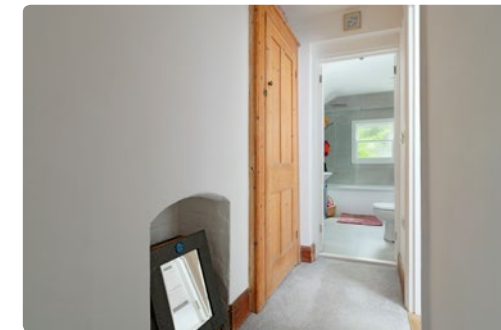


Temperance Villa, Tanner Street, Faversham ME13 7JL

3 BEDROOMS | 1 BATHROOM | 1 RECEPTION



Freehold



## Temperance Villa, Tanner Street, Faversham ME13 7JL

- Elegant Detached Victorian Residence
- Flourishing In Period Features
- Original Fireplaces & Wood Burning Stove
- Creatively Extended Kitchen Dining Room
- Tanked Cellar & Converted Loft Room
- Off Road Parking, Garden & Studio
- Moments To The Market Town Centre
- A Short Walk To The Train Station With HS Links To London

### SITUATION:

The property is conveniently situated in Tanners Street, which enjoys an extremely central location, easy walking distance of Faversham's mainline railway station and thriving medieval town centre.

The charming market town of Faversham has a wide range of high street shops and independent retailers which adorn its attractive high street and its bustling market square. The town also offers excellent leisure facilities with an indoor and outdoor swimming pool, a cinema, a large park and recreation ground, a museum and numerous pubs and restaurants.

It has a good selection of primary schools and two secondary schools, one of which is the renowned Queen Elizabeth Grammar School. Faversham has a mainline railway station with a regular service to London Victoria, Cannon Street and Charing Cross and a high-speed rail link to London St.

Pancras. The nearby M2 motorway gives excellent and fast access to London.

The city of Canterbury is approximately 10 miles away this has a vibrant city centre, which has a wide array of High Street brands alongside independent retailers, cafes and international restaurants and offers a selection of sporting, leisure, and recreational amenities, including the Marlowe Theatre.

The seaside town of Whitstable, famous for its seafood and annual oyster festival held at the vibrant harbour and picturesque quayside, also has a variety of shops, boutiques and restaurants, a good selection of primary and secondary schools and excellent leisure facilities and is 8 miles away.





#### DESCRIPTION:

An elegant, detached Victorian property which has been creatively extended and beautifully enhanced whilst embracing its period features which flourish throughout. Set over four floors with a desirable open plan kitchen dining room, cosy reception and useable cellar space.

Temperance villa is located in Tanner Street which is an exceptionally desirable area and mostly made up of pretty cottages and attractive Georgian residence, it benefits from off road parking and is just a moments' walk to the market town centre and train station which has high speed links to London.

The facade is particularly pleasing with exposed yellow stone weathered brick, complementing the wooden windows, railings surround the front garden, and a few steps rise to a handsome solid wood front door which sits beneath pretty coloured glass displaying the name of the house.



This opens into an inner lobby which has a stained-glass windowed door which in turn leads directly into the sitting room.

Characterful features are at an abundance with stripped wood flooring, an open cast iron fireplace, bespoke alcove cupboards and a bay window. An arched doorway leads though to the open plan kitchen dining room which has recently been extended, with French doors opening onto the courtyard.

The kitchen has been fitted with an array of white gloss units finished in sleek work tops and integrate many main appliances. A fitted dresser sits between the kitchen and dining area whilst the chimney breast encompasses a wood burning stove.

The cellar has been fully tanked and presents an additional living area ideal as a snug or home office.

To the first floor one will find two double bedrooms and a well-appointed family bathroom with built in vanity unit.

From the corridor stairs ascends to the third bedroom which has been beautifully configured in the loft, with large sky light windows opening onto views of the town roof tops.

#### OUTSIDE:

Temperance villa benefits from off road parking to the side of the property, whilst the rear walled garden is mainly laid with patio stones and leads to a wooden framed studio, there is a gate which provides access to the parking at the side of the property.











TOTAL FLOOR AREA: 1446 sq. ft (134 sq. m)  
 HOUSE: 1345 sq. ft (125 sq. m)  
 STUDIO: 101 sq. ft (9 sq. m)



EPC RATING  
 E



COUNCIL TAX BAND  
 D



GENERAL INFORMATION  
 All services are mains connected

Suite 1, 2nd Floor, 3 Jubilee Way, Faversham, Kent ME13 8GD

01227 752617 | sales@foundationestateagents.co.uk | www.foundationestateagents.co.uk

We endeavour to make our sales particulars accurate and reliable, however, they do not constitute or form part of an offer or any contract and none is to be relied upon as statements of representation or fact. Any services, systems and appliances listed in this specification have not been tested by us and no guarantee as to their operating ability or efficiency is given. All measurements, floor plans and site plans are a guide to prospective buyers only, and are not precise. Fixtures and fittings shown in any photographs are not necessarily included in the sale and need to be agreed with the seller. Foundation Estate Agents is a trading name of Foundation Property Services (Kent) Limited. Registered in England and Wales No. 7139236. Registered Address: Suite 1, 2nd Floor, 3 Jubilee Way, Faversham, Kent ME13 8GD.

