



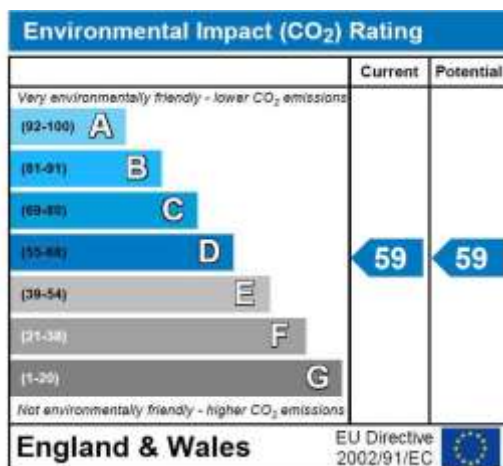
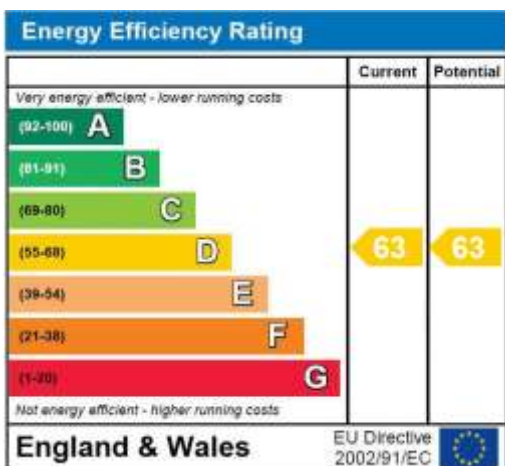
Flat, Windsor Court, Durnsford Road, Wimbledon

£325,000

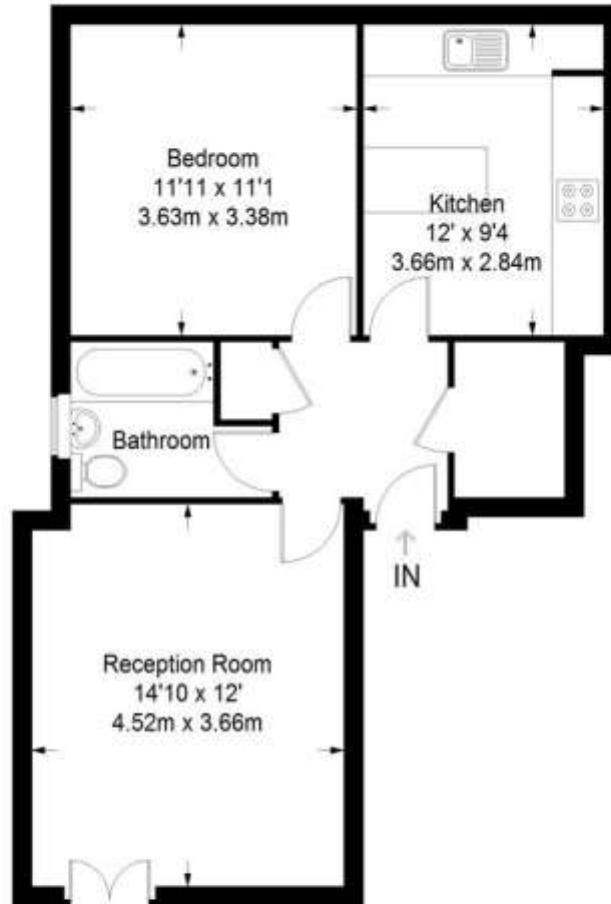
Summary

Brinkley's Estate Agents are delighted to offer this spacious purpose built flat situated a short distance from both Wimbledon Park Underground Station (District Line) and Haydons Road station (Thameslink). The property briefly comprises entrance hall with a home office space. You have a spacious double bedroom with fitted wardrobes, modern bathroom with shower facility, separate kitchen with eating area and large living area with plenty of space for a dining table. Further benefits include quality flooring, communal garden and off street parking. The property offers a total of 559 sq ft internal accommodation. This property is ideally located for access to Wimbledon Park with its excellent local shops and amenities. Wimbledon mainline station and Wimbledon town centre are also within easy reach, as is Earlsfield station. Please call our Wimbledon Hill office on 020 8944 2918, our Wimbledon Park branch on 020 8879 3718 or our

Putney office on 020 8785 3652, for more information and to arrange a viewing. Open 7 days a week. viewings Mon- Fri 8-8, Weekends 9-6.



Durnsford Road



Second Floor = 548 sq ft

Approximate Gross Internal Area
GROUND FLOOR = 548 sq ft / 50.91 sq m
Total = 548 sq ft / 50.91 sq m



This plan is for layout guidance only. Not drawn to scale unless stated. Windows and door openings are approximate. Whilst every care is taken in the preparation of this plan, please check all dimensions, shapes and compass bearings before making any decisions reliant upon them. (ID357409)