



Wimbledon Park Road, Southfields

£1,250,000

Summary

About the property: Brinkley's Estate Agents are delighted to offer this larger than average residence in central Southfields. The property boasts four double bedrooms with potential to extend loft and rear. You have off street parking and a rear garden extending approximately 80 feet. Lot of original character and currently standing at 1489 sq ft. Offered with no onward chain.

Location: The property is located approximately 200m from Southfields Underground station, and the local shops and amenities within Southfield's Village, whilst Earlsfield (mainline railway station) is around 0.7 miles away. Locally are a number of popular schools, notably Sheringdale and St Michael's Primary School (outstanding Ofsted). Southfields

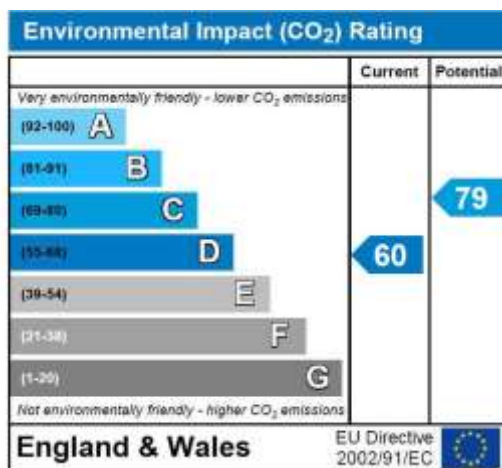
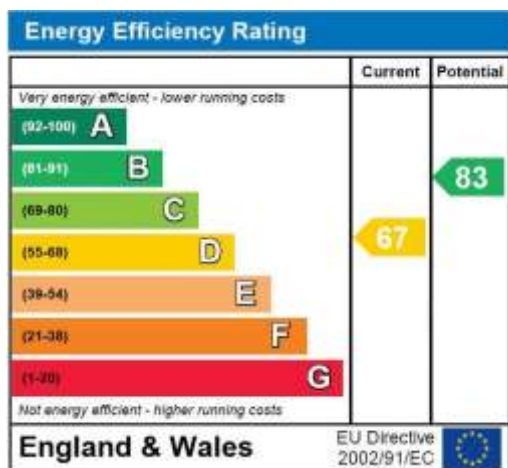


These particulars are intended to give a fair description of the property but their accuracy cannot be guaranteed, and they do not constitute an offer of contract. Intending purchasers must rely on their own inspection of the property. None of the above appliances/services have been tested by ourselves. We recommend purchasers arrange for a qualified person to check all appliances/services before legal commitment.

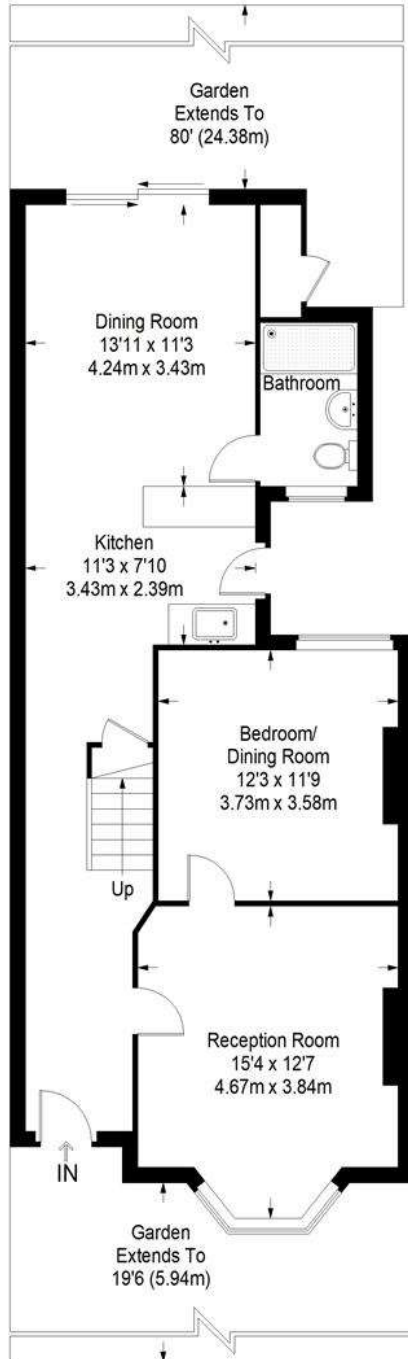
Village offers a pretty collection of boutiques, restaurants and coffee shops with easy access onto Wimbledon Park/Lake. You also have the All England Lawn Tennis Club close by.

How to view: Please contact our Wimbledon Hill office on 0208 944 2918, Wimbledon Park office on 0208 879 3718 or our Putney office on 0208 785 3652 for more information or to book a viewing. We are open from 8:30am - 7pm Monday to Friday and 9am - 6pm on weekends. Sole Agents.

Energy Performance rating: D



Wimbledon Park



Ground Floor = 765 sq ft



First Floor = 724 sq ft

Approximate Gross Internal Area
 GROUND FLOOR = 765 sq ft / 71.07 sq m
 FIRST FLOOR = 724 sq ft / 67.26 sq m
 Total = 1489 sq ft / 138.33 sq m



This plan is for layout guidance only. Not drawn to scale unless stated. Windows and door openings are approximate. Whilst every care is taken in the preparation of this plan, please check all dimensions, shapes and compass bearings before making any decisions reliant upon them. (ID357409)