

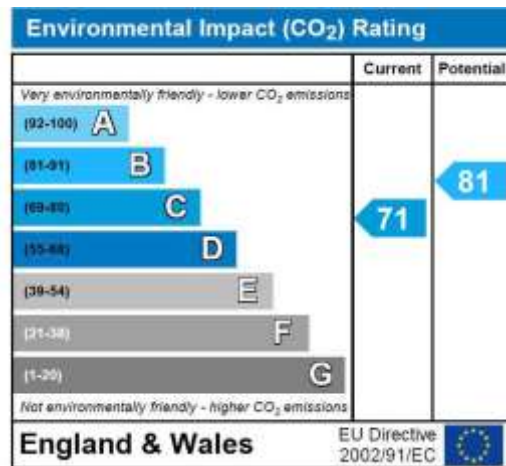
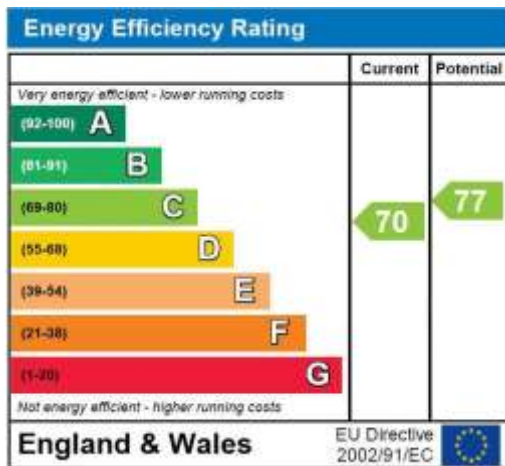


Flat, East Lodge, Inner Park Road, Southfields

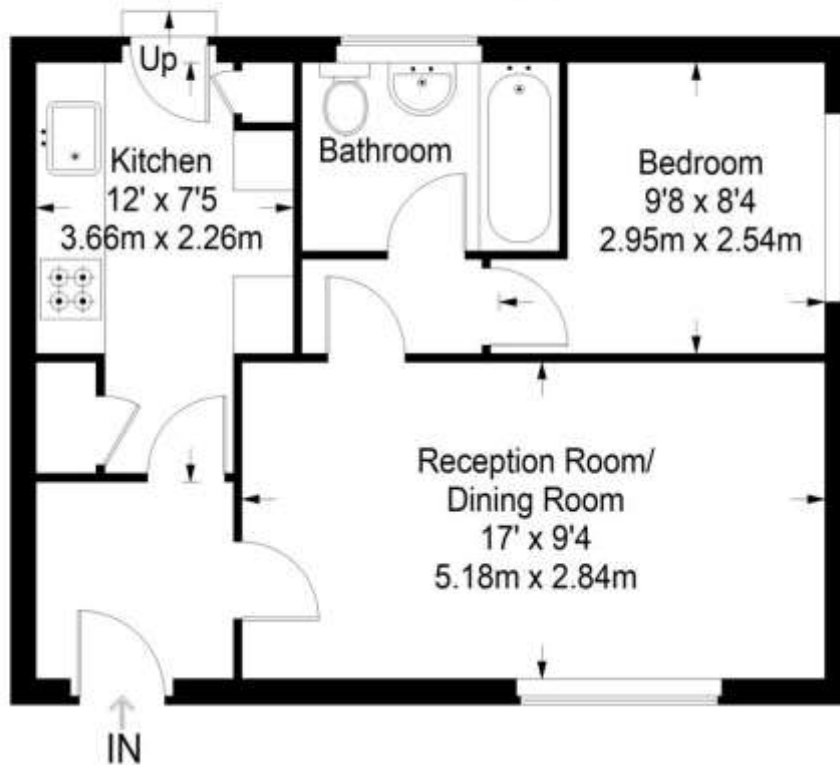
£265,000

Summary

An excellent opportunity to acquire this beautifully presented, one bedroom, ground floor apartment located in a private residential building. This property offers secure entry leading to communal gardens, large lounge, bedroom, bathroom and kitchen. Located moments away from Wimbledon Common and Southfields tube station makes this property an ideal investment or FTB. Sole agents to view please call our Wimbledon Park branch on 0208 879 3718.



East Lodge



Ground Floor = 417 sq ft

Approximate Gross Internal Area
GROUND FLOOR = 417 sq ft / 38.74 sq m
Total = 417 sq ft / 38.74 sq m



This plan is for layout guidance only. Not drawn to scale unless stated. Windows and door openings are approximate. Whilst every care is taken in the preparation of this plan, please check all dimensions, shapes and compass bearings before making any decisions reliant upon them. (ID357409)