



Flat, Bassett House, Wimbledon

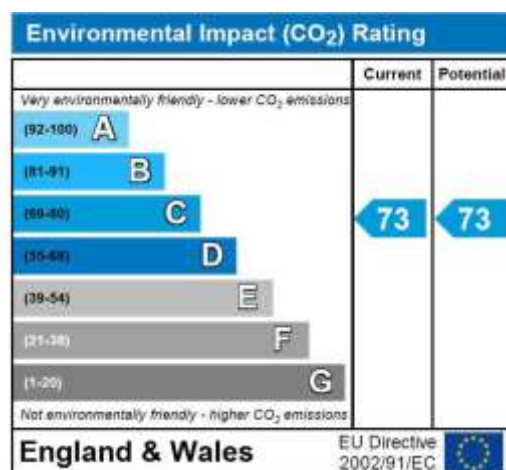
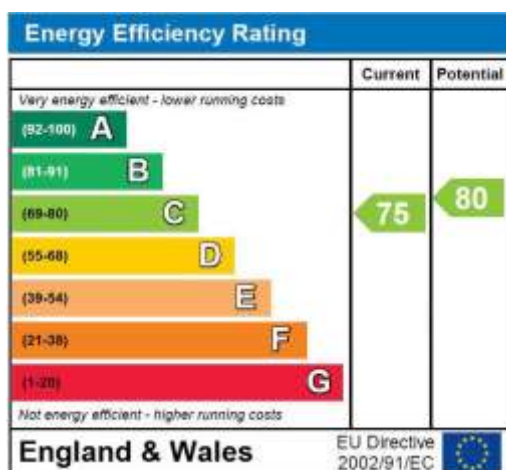
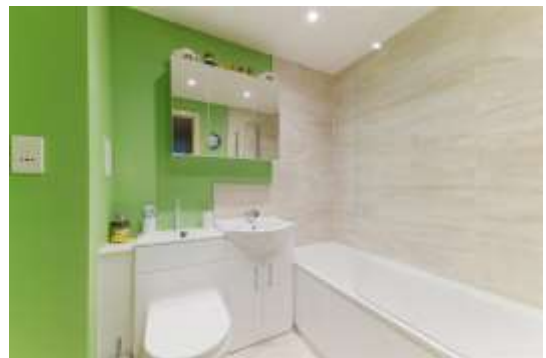
£325,000

Summary

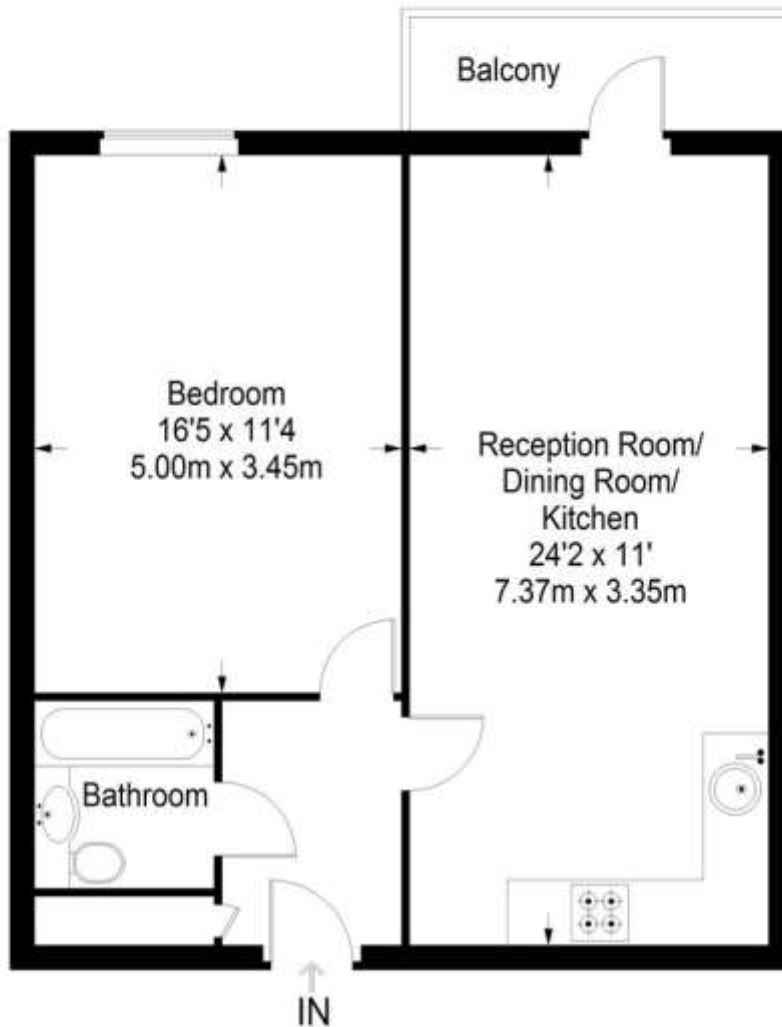
**** 549 SQ FT ****

Brinkley's Estate Agents are delighted to bring to the open market, this sought after, modern-build, luxury apartment at the Sanctuary development in Wimbledon. This contemporary accommodation delivers, one double bedroom, a lavishly-fitted bathroom and a modern, fitted kitchen, which in turn leads onto the lounge/dining room. Further notable benefits include, private balcony, long lease and allocated parking for one car. Within close proximity is Haydons Road Station, Wimbledon Park Tube Station (District Line), great road/bus links in and out of London and the residential area's shops, parks, commons and recreational facilities. To view without delay, please call Brinkley's on 0208 944 2918. Sole Agents.

Energy Efficiency Rating: C



Bassett House



First Floor = 549 sq ft

Approximate Gross Internal Area
FIRST FLOOR = 549 sq ft / 51.00 sq m
Total = 549 sq ft / 51.00 sq m

