



Flat, Esher Gardens, Southfields

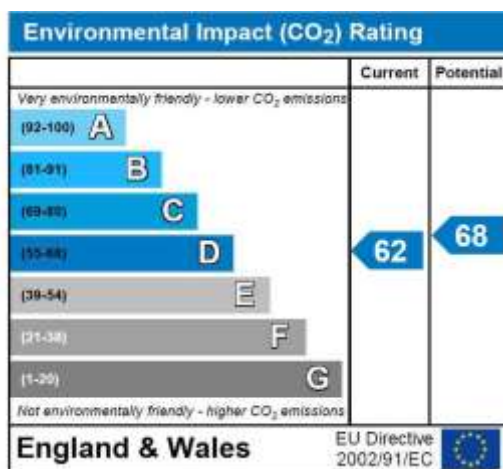
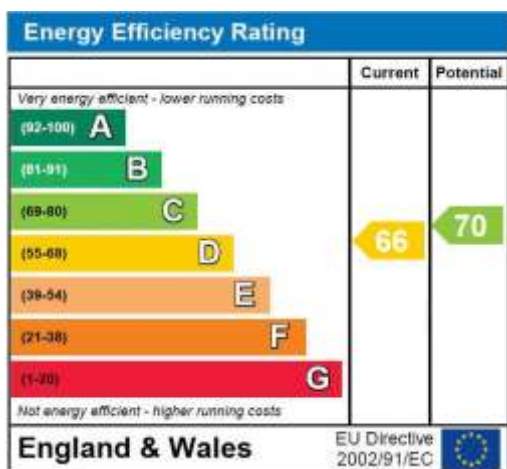
**£450,000**

**Summary**

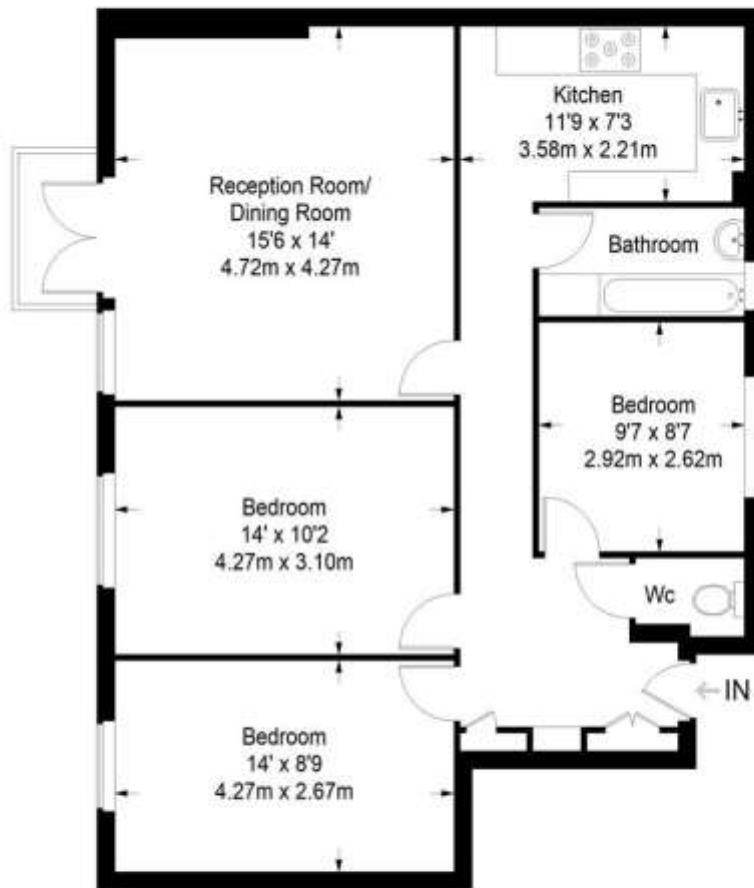
Brinkley's Estate Agents are delighted to bring to the market this beautifully presented apartment situated on the top floor of a purpose built block within the popular Esher Gardens Development on Wimbledon Parkside. Located adjacent to the green open spaces of Wimbledon and Putney Commons and within easy reach of Southfields Underground Station (District Line) and regular bus routes to both Wimbledon Village and Putney Town Centre. Briefly comprising; Entrance Hall with excellent fitted storage & cupboards, Newly Fitted Kitchen, Reception Room with door to a Private Balcony overlooking the Communal Gardens, Three Double Bedrooms & Modern Bathroom and WC. Benefits include Off Street Parking, Balcony, Lift, Double Glazing, Gas C/H & Communal Gardens. This property would make an ideal First Time Buy

or Rental Investment. Please call Brinkleys in Wimbledon Park or Putney today for more details or to arrange a viewing.  
Sole Agent.

Energy Efficiency Rating: D



# Esher Gardens



**Fourth Floor = 841 sq ft**

Approximate Gross Internal Area  
FOURTH FLOOR = 841 sq ft / 78.13 sq m  
Total = 841 sq ft / 78.13 sq m



This plan is for layout guidance only. Not drawn to scale unless stated. Windows and door openings are approximate. Whilst every care is taken in the preparation of this plan, please check all dimensions, shapes and compass bearings before making any decisions reliant upon them. (ID357409)