



Flat, Bassett House, Durnsford Road, Wimbledon Park
£450,000

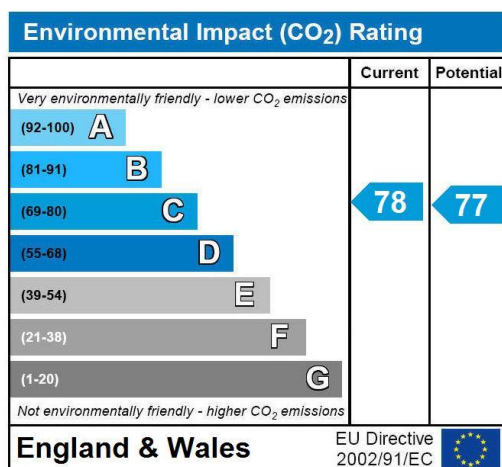
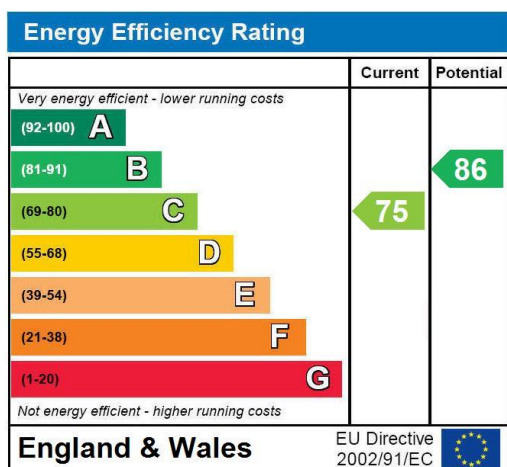
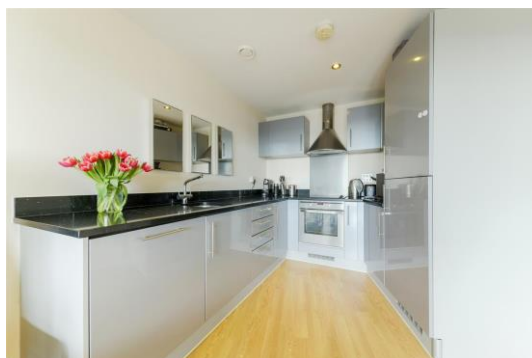
Summary

**** SOUTH FACING - STUNNING VIEWS ****

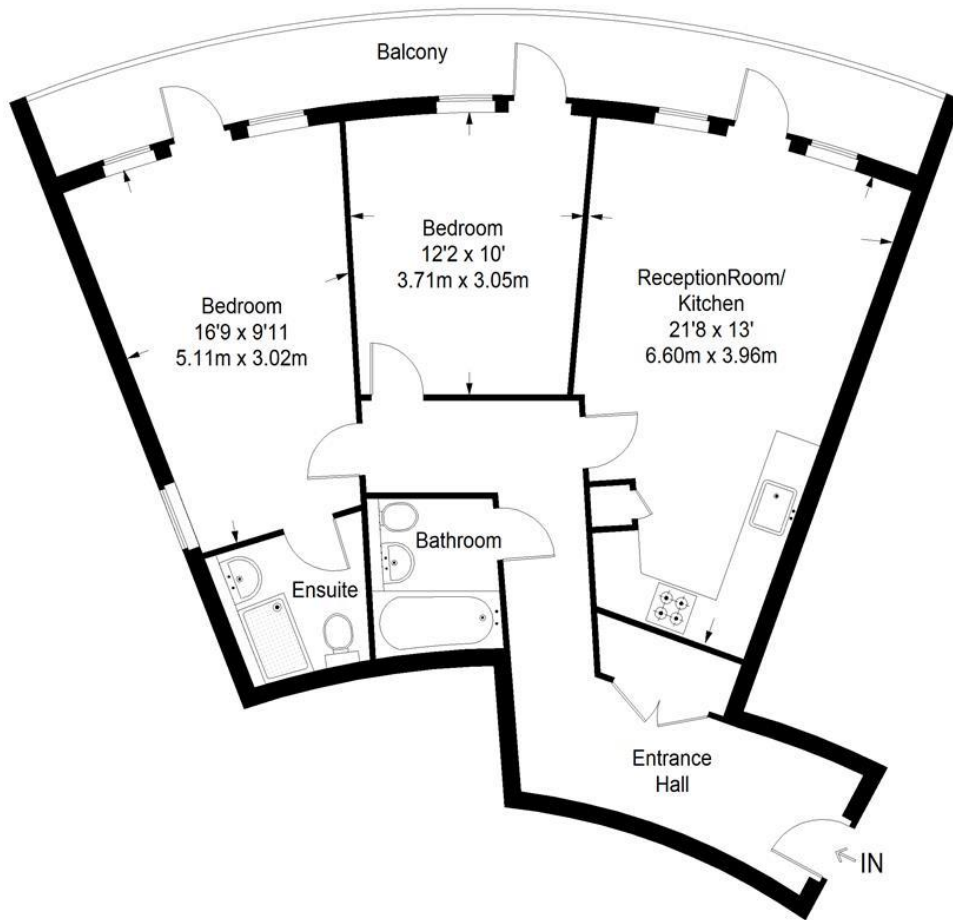
Brinkley's Estate Agents are delighted to present this stunning, two double bedroom, two bathroom apartment in Bassett House in the exclusive Sanctuary Development off Durnsford Road in Wimbledon. Positioned on the third floor with stunning London views from the private balcony. This spacious apartment is finished to a high standard and offers a modern open plan lounge/kitchen, master bedroom with en-suite bathroom, second double bedroom and family bathroom. This property also benefits from a private balcony, which surrounds the whole flat, on-site co-op grocery store. There is underground parking allocated to the property and is within walking distance to Wimbledon centre and Haydons Road Station (NR) and close to all amenities. **MUST BE SEEN.** Please call our Wimbledon Hill office on 0208 944 2918

Open 7 days a week; please call to make an appointment.

Energy Efficiency Rating: C



Bassett House



Third Floor = 777 sq ft

Approximate Gross Internal Area
THIRD FLOOR = 777 sq ft / 72.18 sq m
Total = 777 sq ft / 72.18 sq m



This plan is for layout guidance only. Not drawn to scale unless stated. Windows and door openings are approximate. Whilst every care is taken in the preparation of this plan, please check all dimensions, shapes and compass bearings before making any decisions reliant upon them. (ID357409)