



Sunnymead Road, Putney

£569,000

Summary

About the property: Brinkley's Estate Agents are delighted to offer this two bedroom family home to the market. The property comprises an entrance hall with storage cupboard, front reception room, lovely shower room finished to a high standard, a fully fitted kitchen with underfloor heating leading to a private south-west facing rear garden with patio area and the rest laid to lawn plus side gate and storage shed. The first floor offers two good sized bedrooms with fitted wardrobes and additional storage cupboards. Further benefits include front garden area and the potential to extend rear and loft (STPP).

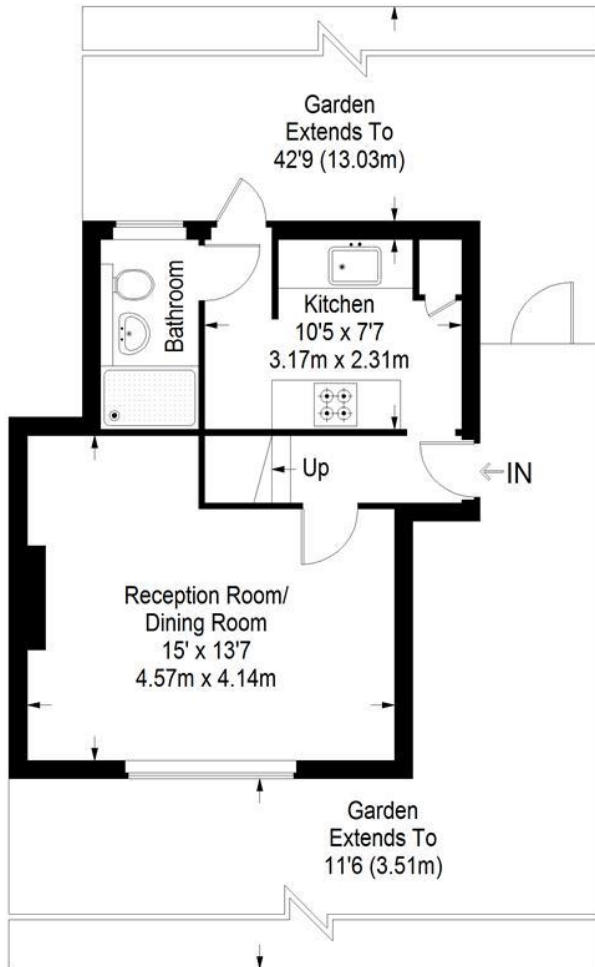
Location: Sunnymead is a residential street fronting a communal green within the popular Dover House Conservation Area. The house is a stone's throw from the 430 bus stop with a frequent service to Putney High Street (9 minutes) and its shops, bars, restaurants and mainline rail station. Barnes station is also only a short walk from the property and there is easy access to an abundance of green spaces and parks, with Putney Heath less than half a mile away and Wimbledon Common and Richmond Park close by.

How to view: Please contact our Wimbledon Hill office on 0208 944 2918, Wimbledon Park office on 0208 879 3718 or our Putney office on 0208 785 3652 for more information or to book a viewing. We are open from 8:30am - 7pm Monday to Friday and 9am - 6pm on weekends. Sole Agents.

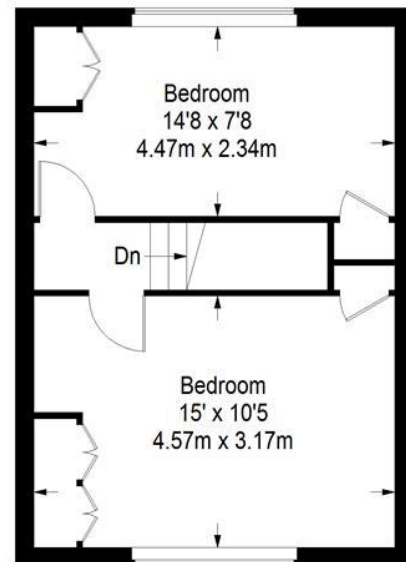
EPC: D



Sunnymead Road



Ground Floor = 326 sq ft



First Floor = 313 sq ft

Approximate Gross Internal Area
 GROUND FLOOR = 326 sq ft / 30.29 sq m
 FIRST FLOOR = 313 sq ft / 29.08 sq m
 Total = 639 sq ft / 59.36 sq m



This plan is for layout guidance only. Not drawn to scale unless stated. Windows and door openings are approximate. Whilst every care is taken in the preparation of this plan, please check all dimensions, shapes and compass bearings before making any decisions reliant upon them. (ID357409)

