



Edgecombe House, Whitlock Drive, Southfields
£315,000

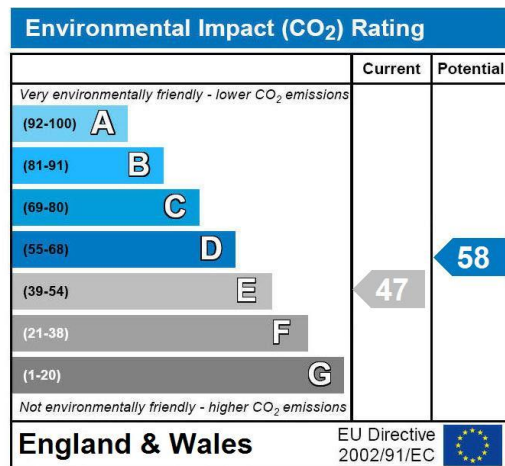
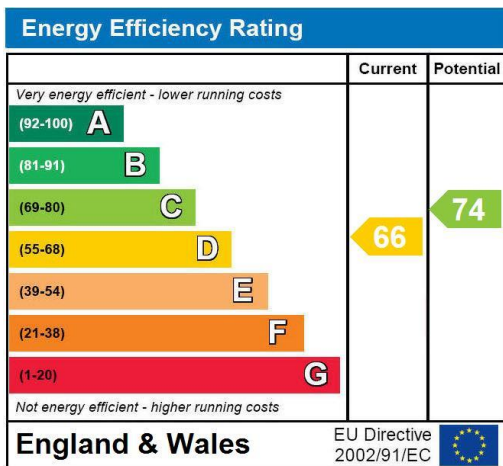
Summary

Brinkley's Estate Agents are pleased to present this spacious, two double bedroom, apartment in Edgecombe House, off Whitlock Drive in Southfields. Within close proximity to Southfields Underground station (District Line), excellent bus links, easy access to the A3 and close to all local amenities. The property comprises two evenly-sized, large double bedrooms, a reception room leading to a balcony, family bathroom and fully-fitted kitchen. Further benefits include, no onward chain, STUNNING LONDON VIEWS and parking access. MUST BE SEEN. Please call either our Wimbledon Park on 02088793718, our Wimbledon Hill Road branch on 02089442918 for a viewing today.

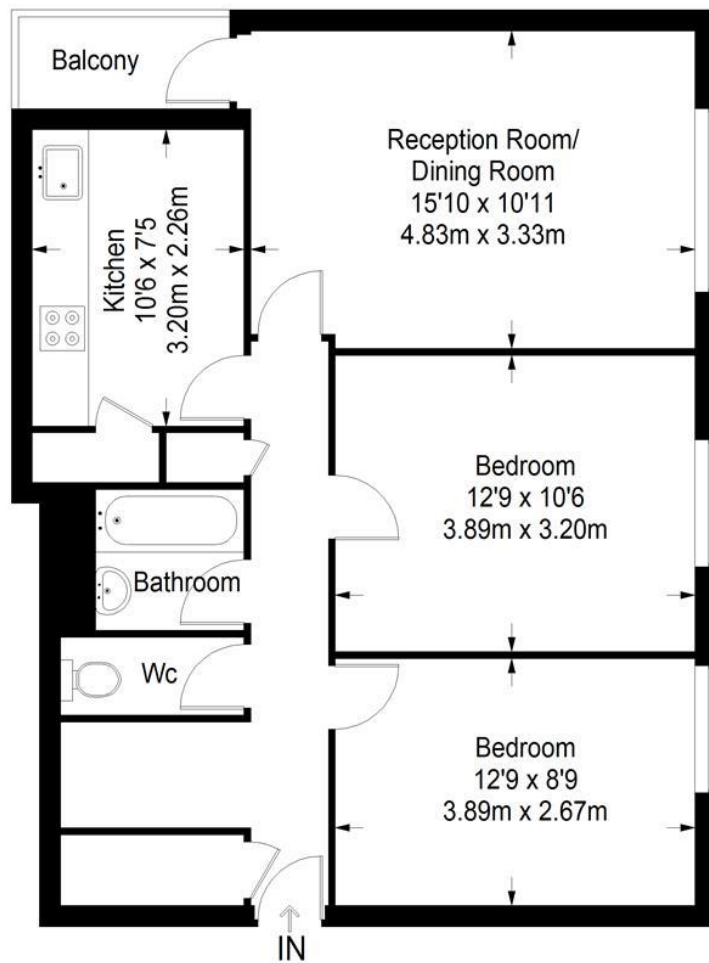
EPC: D



These particulars are intended to give a fair description of the property but their accuracy cannot be guaranteed, and they do not constitute an offer of contract. Intending purchasers must rely on their own inspection of the property. None of the above appliances/services have been tested by ourselves. We recommend purchasers arrange for a qualified person to check all appliances/services before legal commitment.



Edgecombe House



Fourth Floor = 682 sq ft

Approximate Gross Internal Area
FOURTH FLOOR = 682 sq ft / 63.36 sq m
Total = 682 sq ft / 63.36 sq m



This plan is for layout guidance only. Not drawn to scale unless stated. Windows and door openings are approximate. Whilst every care is taken in the preparation of this plan, please check all dimensions, shapes and compass bearings before making any decisions reliant upon them. (ID357409)