



Flat, Crondall House, Fontley Way, Roehampton
£180,000

Summary

CASH BUYERS ONLY

Brinkley's are pleased to bring onto the market this well presented, one double bedroom, third floor apartment, located in Fontley Way in Roehampton. This property comprises a double bedroom, a large lounge with access to a private balcony overlooking Richmond Park and Roehampton golf course, a good size and fully fitted kitchen, a bathroom and excellent storage. To view please call Brinkley's in Putney on 0208 785 3652. No Chain

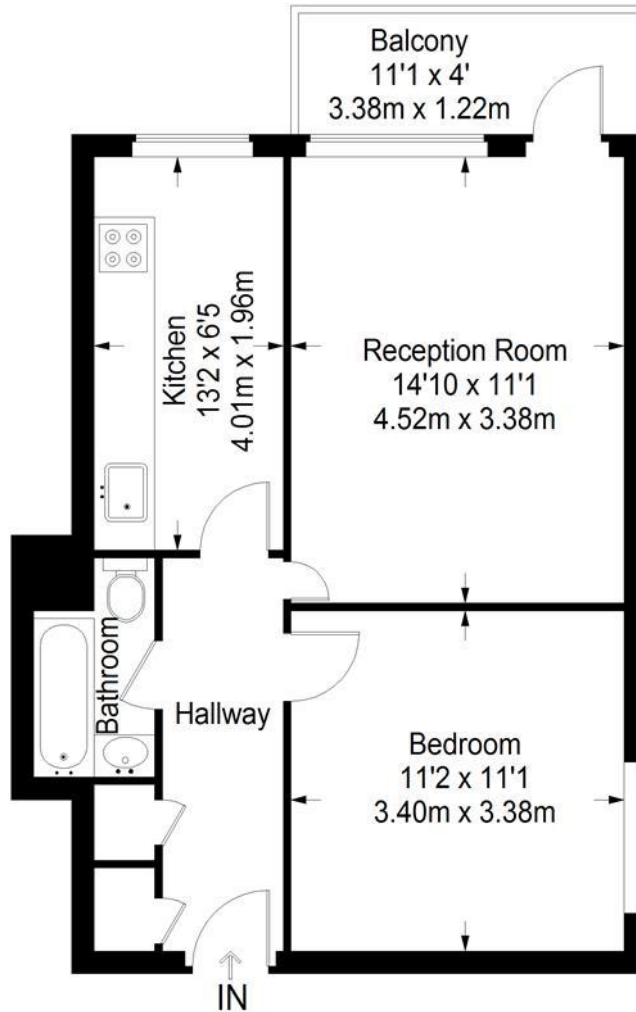
Energy Efficiency Rating: D



These particulars are intended to give a fair description of the property but their accuracy cannot be guaranteed, and they do not constitute an offer of contract. Intending purchasers must rely on their own inspection of the property. None of the above appliances/services have been tested by ourselves. We recommend purchasers arrange for a qualified person to check all appliances/services before legal commitment.



Crondall House



Ground Floor = 467 sq ft

Approximate Gross Internal Area
GROUND FLOOR = 467 sq ft / 43.4 sq m
Total = 467 sq ft / 43.4 sq m



This plan is for layout guidance only. Not drawn to scale unless stated. Windows and door openings are approximate. Whilst every care is taken in the preparation of this plan, please check all dimensions, shapes and compass bearings before making any decisions reliant upon them. (ID357409)

