



Faraday Road, Wimbledon

£885,000

Summary

Brinkley's Estate Agents are delighted to offer this fully extended Victorian, family home located within the sought-after, South Park Gardens area of Wimbledon. This terraced house offers open lounge/dining kitchen area on the ground floor, which leads to an easily maintained south facing garden. You also have a w.c. The first floor offers two spacious double bedrooms, family bathroom and a single bedroom. The loft has been tastefully extended and offers a master bedroom with en suite shower room. Further benefits include no onward chain and priority catchment for Holy Trinity School.

Location: The property is located on Faraday Road, close to Wimbledon town centre with its District Line link and mainline station that offers services to London Waterloo, as well as the Northern Line underground station at South Wimbledon. The Broadway, in the town, offers a wide selection of shops, bars, restaurants and other local amenities which include the Centre Court Shopping Centre, two cinemas and theatres. Local residents can benefit from the nearby beautifully restored South Park Gardens. Wimbledon is also well known for its excellent schools in both the private and state sectors. You also have Haydons Road railway station with links to central London moments away.

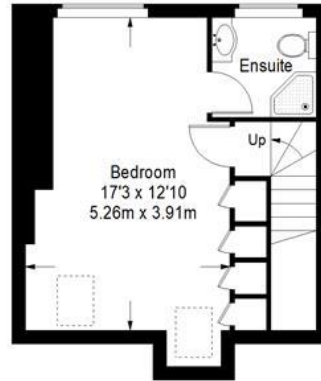
How to view: Please contact our Wimbledon Hill office on 0208 944 2918, Wimbledon Park office on 0208 879 3718 or our Putney office on 0208 785 3652 for more information or to book a viewing. We are open from 8:30am - 7pm Monday to Friday and 9am - 6pm on weekends. Sole Agents.



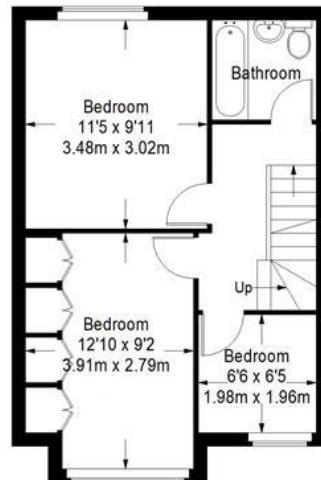
Faraday Road



Ground Floor = 538 sq ft



Second Floor = 266 sq ft



First Floor = 379 sq ft

Approximate Gross Internal Area
 GROUND FLOOR = 538 sq ft / 49.98 sq m
 FIRST FLOOR = 379 sq ft / 35.21 sq m
 SECOND FLOOR = 266 sq ft / 24.71 sq m
 Total = 1183 sq ft / 109.90 sq m



This plan is for layout guidance only. Not drawn to scale unless stated. Windows and door openings are approximate. Whilst every care is taken in the preparation of this plan, please check all dimensions, shapes and compass bearings before making any decisions reliant upon them. (D357409)

