



Flat, Sheffield Gardens, Roehampton
£1,556 pcm

Summary

Brinkley's Putney are pleased to offer this superb, split-level apartment located in the ever-popular location of Sheffield Gardens in Roehampton. With wooden floors throughout and comprised of four double bedrooms, two bathrooms, open-plan living/ kitchen area with plenty of storage throughout, this property is perfect for sharers and students are more than welcome. Also benefiting from Wandsworth council tax and only moments from Richmond Park.

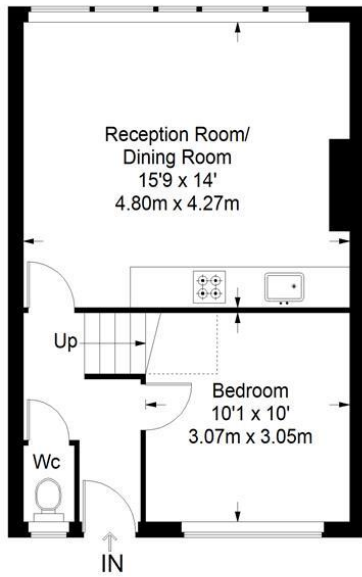
In order to arrange a viewing, please call our Putney office on 02087853652, our Wimbledon Park office on 02088793718 or our Wimbledon Hill office on 02089442918.

Open 7 days a week; please call to make an appointment.

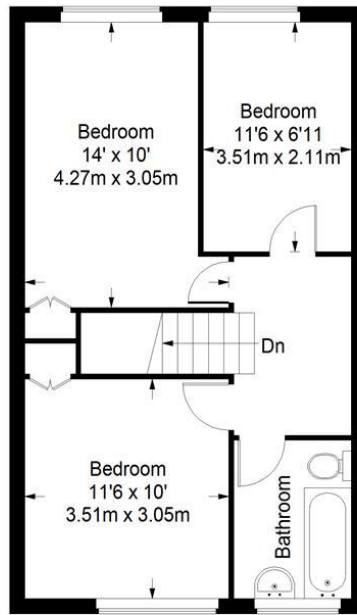
Energy Efficiency Rating: C



Sherfield Gardens



First Floor = 395 sq ft



Second Floor = 452 sq ft

Approximate Gross Internal Area
 FIRST FLOOR = 395 sq ft / 36.70 sq m
 SECOND FLOOR = 452 sq ft / 41.99 sq m
 Total = 847 sq ft / 78.69 sq m



This plan is for layout guidance only. Not drawn to scale unless stated. Windows and door openings are approximate. Whilst every care is taken in the preparation of this plan, please check all dimensions, shapes and compass bearings before making any decisions reliant upon them. (ID357409)

