



Flat, Merton Mansions, Bushey Road, Raynes Park

£330,000

Summary

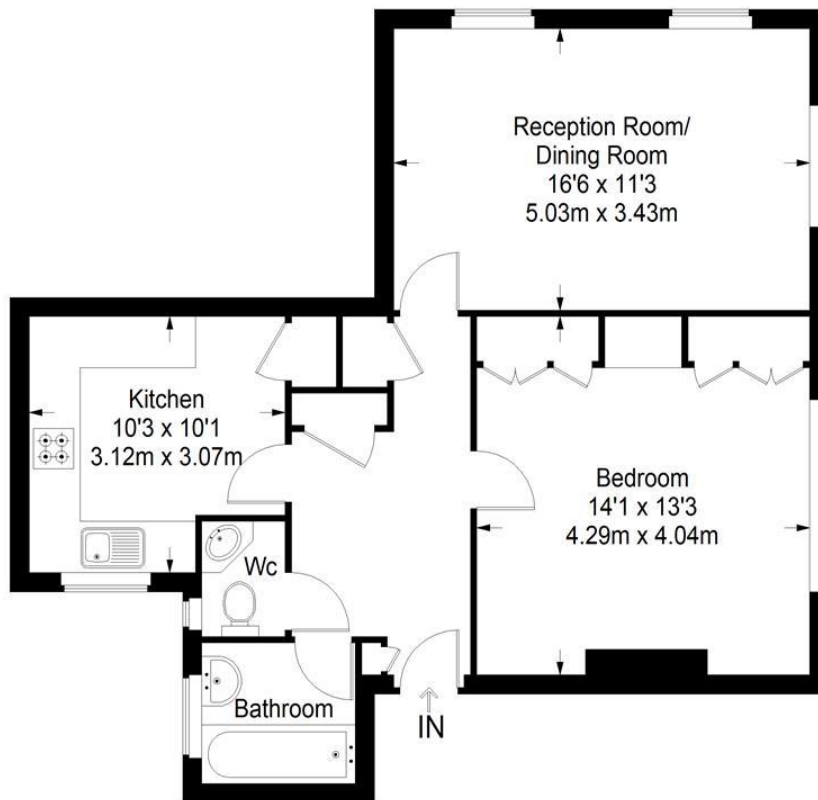
About the property: Brinkley's Estate Agents are delighted to offer to the market this, well-presented and very spacious, top floor apartment. The accommodation comprises an entrance hall, a large reception room with dual aspect windows, a fully-fitted kitchen, large double bedroom and a family bathroom with a separate W.C. Further benefits include a long lease, double glazing throughout, private residents' parking and communal gardens. This great mansion flat would make an ideal First Time Buy or rental investment. Offering over 600 sq ft of internal accommodation.

Location: Located within a sought-after mansion block, that is conveniently located adjacent to the popular, David Lloyd Sports complex with its gym, tennis courts and swimming pools and within easy reach of both Wimbledon Chase and Raynes Park is only 10 minutes walk away, mainline stations, offering easy links in to London.

How to view: Please contact our Wimbledon Hill office on 0208 944 2918, Wimbledon Park office on 0208 879 3718 or our Putney office on 0208 785 3652 for more information or to book a viewing. We are open from 8.30am - 7pm Monday to Friday and 9am - 6pm on weekends. Sole Agents



Merton Mansions



Ground Floor = 610 sq ft

Approximate Gross Internal Area
GROUND FLOOR = 610 sq ft / 56.67 sq m
Total = 610 sq ft / 56.67 sq m



This plan is for layout guidance only. Not drawn to scale unless stated. Windows and door openings are approximate. Whilst every care is taken in the preparation of this plan, please check all dimensions, shapes and compass bearings before making any decisions reliant upon them. (ID357409)

