



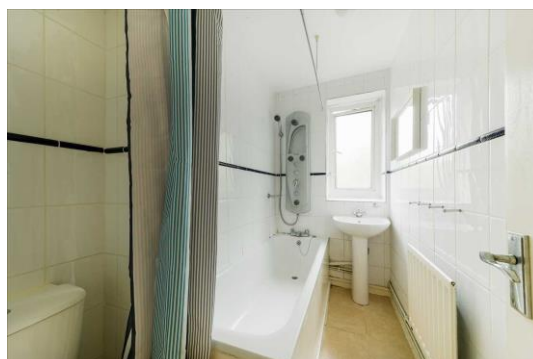
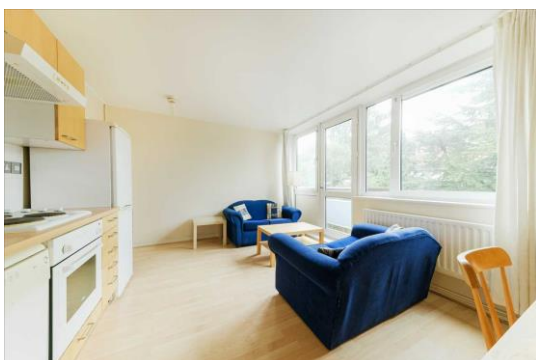
Maisonette, Ramsdean House, Roehampton
£1,586 pcm

Summary

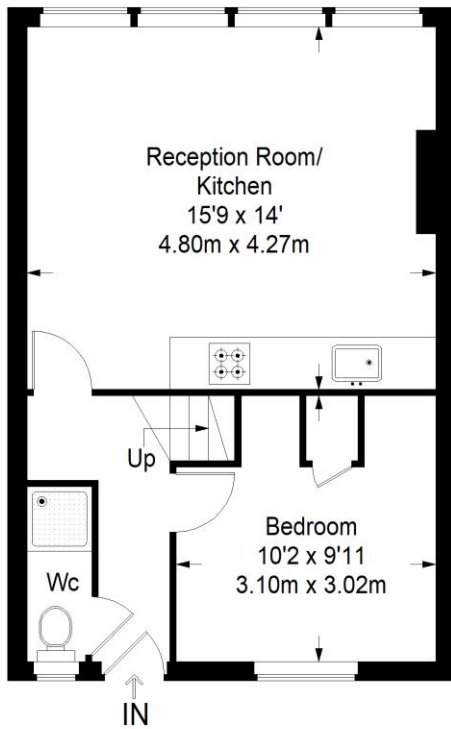
ABOUT THE PROPERTY: Brinkley's of Putney are pleased to offer this superb, split-level apartment, located in Roehampton. The property is comprised of four bedrooms, two bathrooms, a spacious kitchen and a living room. This property is perfect for sharers or a growing family and also benefits from Wandsworth Council Tax and being only moments from Richmond Park. In order to arrange a viewing,

HOW TO VIEW: Please call our Wimbledon Hill office on 020 8944 2918, our Wimbledon Park branch on 020 8879 3718 or our Putney office on 020 8785 3652, for more information and to arrange a viewing. Open 7 days a week. Viewings Mon- Fri 8-8, Weekends 9-6.

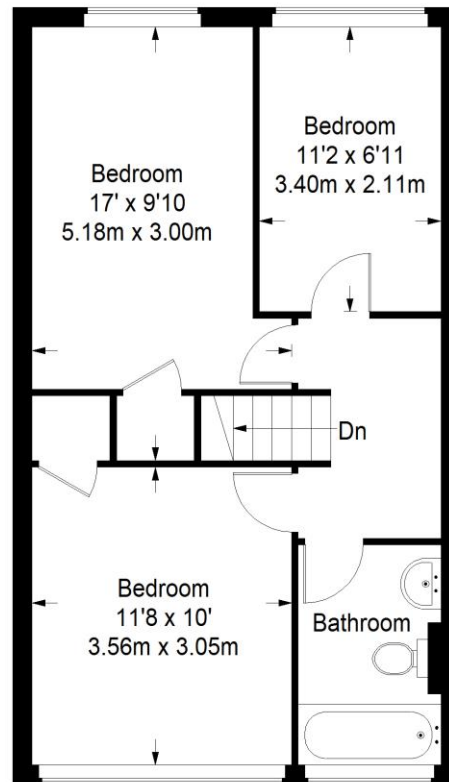
Energy Efficiency Rating: C



Ramsdean Garden



First Floor = 387 sq ft



Second Floor = 449 sq ft

Approximate Gross Internal Area
 FIRST FLOOR = 387 sq ft / 35.95 sq m
 SECOND FLOOR = 449 sq ft / 41.71 sq m
 Total = 836 sq ft / 77.66 sq m



This plan is for layout guidance only. Not drawn to scale unless stated. Windows and door openings are approximate. Whilst every care is taken in the preparation of this plan, please check all dimensions, shapes and compass bearings before making any decisions reliant upon them. (ID357409)

