



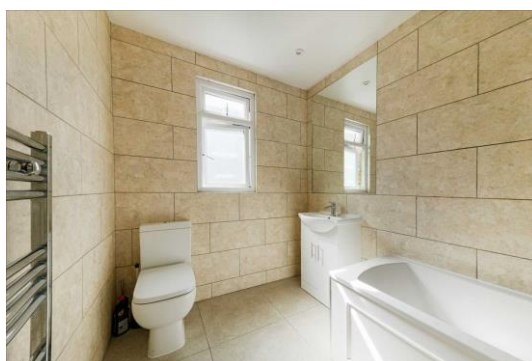
Cannon Hill Lane, Wimbledon
£2,750 pcm

Summary

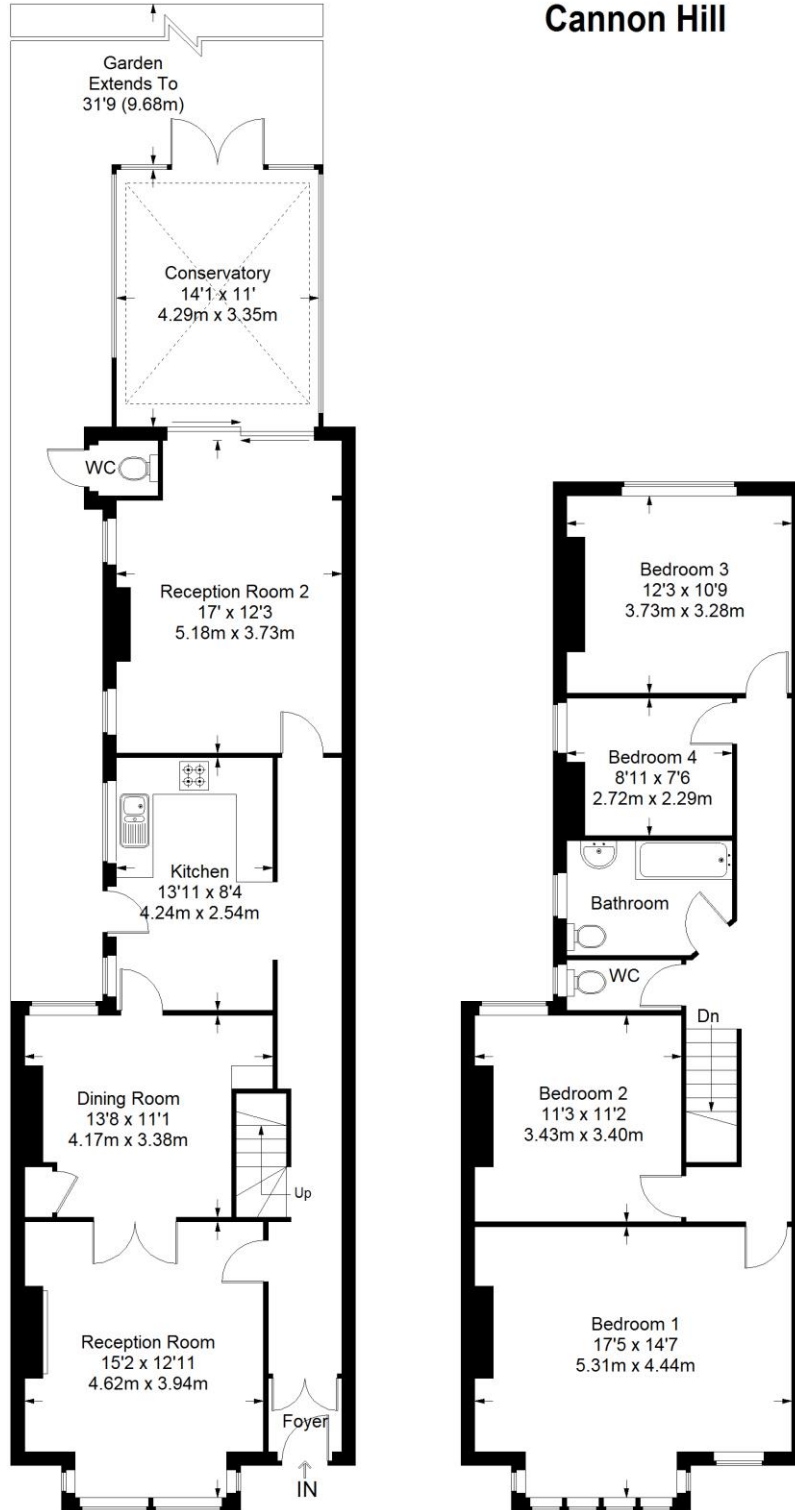
ABOUT THE PROPERTY: Brinkleys are pleased to offer this fantastic, four bedroom, terrace house on Cannon Hill Lane, Merton Park. Situated in a convenient location, close to Raynes Park, Morden and Wimbledon Chase Stations, it provides good transport to and from Central London. The property comprises; four double bedrooms large family bathroom with separate toilet, huge eat-in kitchen with all appliances, double reception room leading onto private garden. Benefits also include an huge separate living area. FURNISHED.

HOW TO VIEW: Please call our Wimbledon Hill office on 020 8944 2918, our Wimbledon Park branch on 020 8879 3718 or our Putney office on 020 8785 3652, for more information and to arrange a viewing. Open 7 days a week. Viewings Mon- Fri 8-8, Weekends 9-6.

Energy Efficiency Rating: E



Cannon Hill



Ground Floor = 982 sq ft

First Floor = 776 sq ft

Approximate Gross Internal Area
 GROUND FLOOR = 982 sq ft / 91.23 sq m
 FIRST FLOOR = 776 sq ft / 72.09 sq m
 Total = 1758 sq ft / 163.32 sq m



This plan is for layout guidance only. Not drawn to scale unless stated. Windows and door openings are approximate. Whilst every care is taken in the preparation of this plan, please check all dimensions, shapes and compass bearings before making any decisions reliant upon them. (ID357409)

