



Flat Totland House, ermont Road, Wandsworth  
**£385,000**

**Summary**

About the property: A superb, two bedroom property in the sought after area of Wandsworth. The property briefly comprises entrance hall, separate fully fitted kitchen, spacious lounge area, with room for dining table and two double bedrooms. The property is also offered to the market with no onward chain.

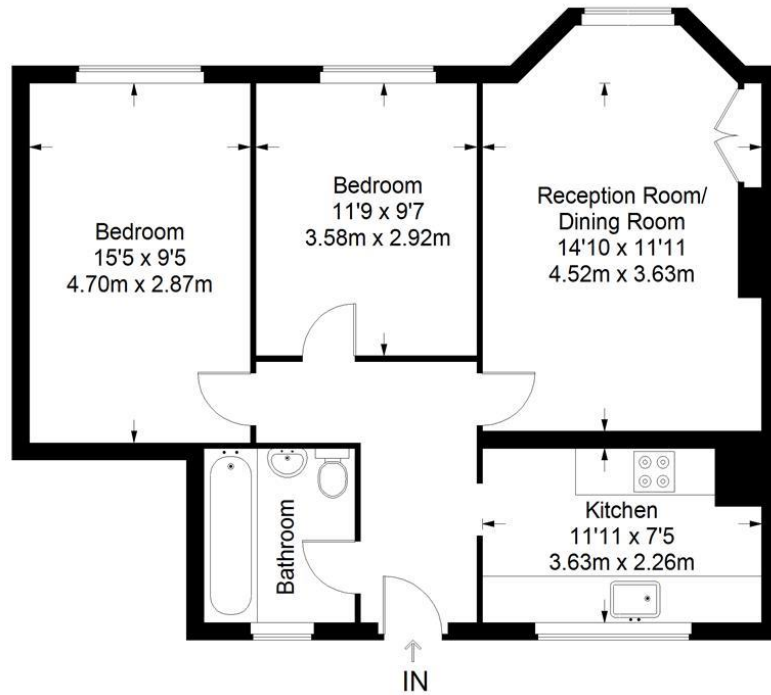
Location: Totland House is located in close proximity to Southside shopping complex, with its array of high street shops, restaurants, multiplex cinema and a gym. Wandsworth Town and Earlsfield mainline stations are both within close

proximity of the property, providing direct links to the City, the West End and outer London. King George's Park with its tennis courts, pond and playing fields is just moments away.

How to view: Please contact our Wimbledon Hill office on 0208 944 2918, Wimbledon Park office on 0208 879 3718 or our Putney office on 0208 785 3652 for more information or to book a viewing. We are open from 8.30am - 7pm Monday to Friday and 9am - 6pm on weekends. Sole Agents



# Totland House



**Third Floor = 693 sq ft**

Approximate Gross Internal Area  
THIRD FLOOR = 693 sq ft / 64.38 sq m  
Total = 693 sq ft / 64.38 sq m



This plan is for layout guidance only. Not drawn to scale unless stated. Windows and door openings are approximate. Whilst every care is taken in the preparation of this plan, please check all dimensions, shapes and compass bearings before making any decisions reliant upon them. (ID357409)

