



Flat, Holmsley House, Tangley Grove, Roehampton
£235,000

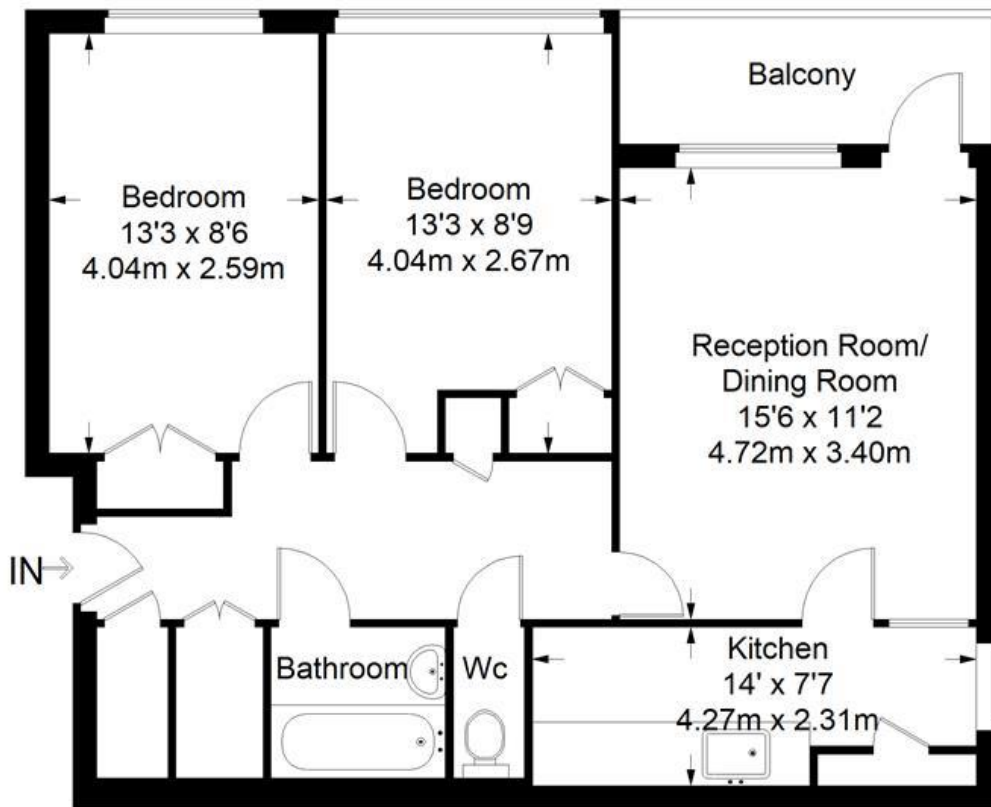
Summary

**** Cash Buyer Only ****

Brinkley's Estate Agents are pleased to offer this well presented apartment located on the eighth floor of a popular, purpose built block a short walk from the green open spaces of Richmond Park and Roehampton's excellent local shopping facilities. Briefly comprising; entrance hall, lounge/diner with door to balcony, modern kitchen and bathroom with separate WC. Further benefits include gas C/H to radiators, lots of storage and a communal lift. This property is offered chain free and would make an ideal Investment purchase. For more details or to arrange a viewing, please contact Brinkley's in Putney on (020) 8785 3652.



Holmsley House



Eight Floor = 629 sq ft

Approximate Gross Internal Area
EIGHT FLOOR = 629 sq ft / 58.43 sq m
Total = 629 sq ft / 58.43 sq m



This plan is for layout guidance only. Not drawn to scale unless stated. Windows and door openings are approximate. Whilst every care is taken in the preparation of this plan, please check all dimensions, shapes and compass bearings before making any decisions reliant upon them. (ID357409)

