



Flat, Masboro Lodge, Southey Road, Wimbledon
£350,000

Summary

Brinkley's Estate Agents are pleased to present this spacious and modern, one bedroom apartment in Masboro Lodge in Southey Road, Wimbledon. Within close proximity to Wimbledon Station (District Line and mainline), South Wimbledon (Northern Line) and excellent bus links. Situated on the first floor, this flat benefits from having double glazing throughout, gas central heating, a large double reception room, modern fully-fitted kitchen, a large double bedroom, a large family

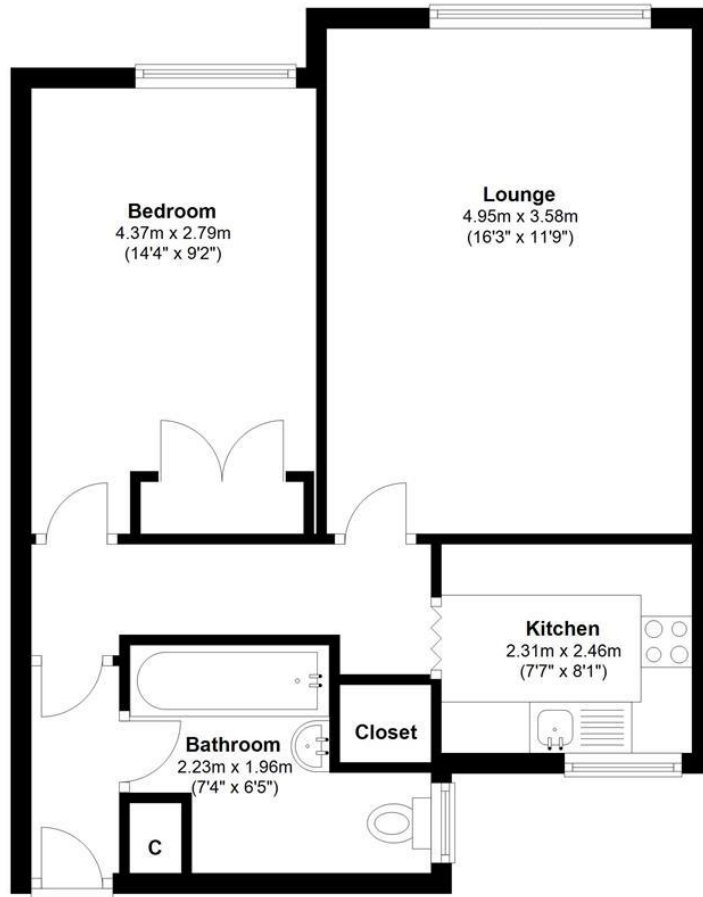
bathroom and ample storage throughout. Further benefiting from a secure lock-up garage (ideal for parking/storage). It is offered chain free and is ideal for first time buyers. Please call our Wimbledon Hill office on 020 8944 2918, Wimbledon Park on 020 8879 3718 or our Putney office on 020 8785 3652.

Energy Efficiency Rating: C



First Floor

Approx. 49.5 sq. metres (533.0 sq. feet)



Total area: approx. 49.5 sq. metres (533.0 sq. feet)

