



Astonville Street, Southfields  
**£1,000,000**

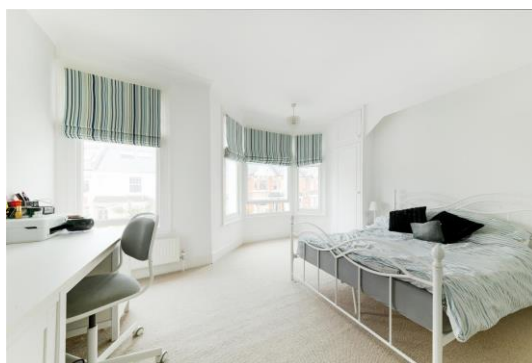
**Summary**

About the property: Brinkley's are excited to offer a well presented, four bedroom, period family home on the ever-popular, Southfields grid. This terraced residence consists of a front reception room with feature fireplace, a modern fully fitted kitchen/dining area with bi-folding doors leading to a private low maintenance garden. On the first floor you have two double bedrooms and a family bathroom, stairs leading to the second floor, where you find another two bedrooms, one which has an en-suite. The property is offered chain free.

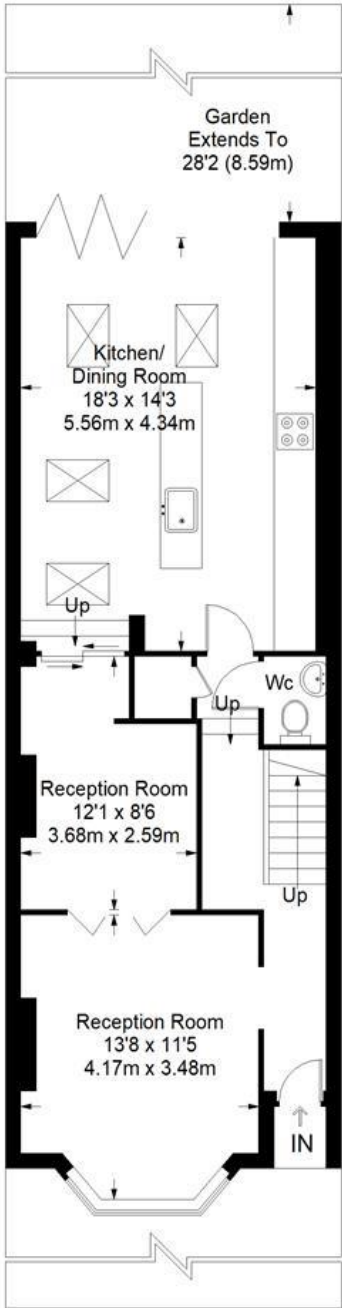
Location: Astonville Street is in the popular area Southfields. The property is located approximately 500m from Southfields Underground station, and the local shops and amenities within Southfield's Village, whilst Earlsfield (mainline railway station) is around 0.6 miles away. Locally are a number of popular schools, notably Sheringdale Primary School (outstanding Ofsted). Southfields Village offers a pretty collection of boutiques, restaurants and coffee shops with easy access onto Wimbledon Park/Lake. You also have the All England Lawn Tennis Club close by.

How to view: Please contact our Wimbledon Hill office on 0208 944 2918, Wimbledon Park office on 0208 879 3718 or our Putney office on 0208 785 3652 for more information or to book a viewing. We are open from 8:30am - 7pm Monday to Friday and 9am - 6pm on weekends. Sole Agents.

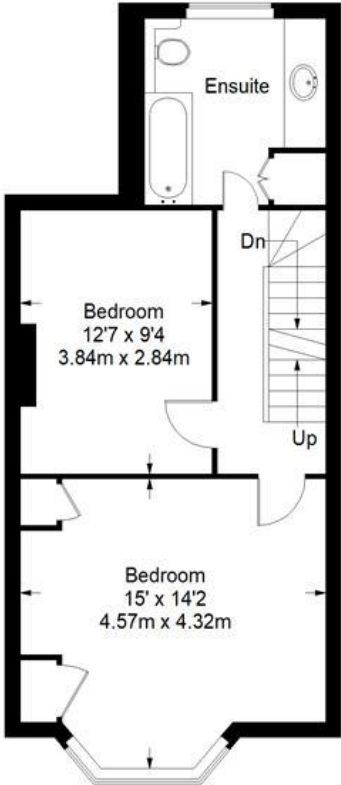
Energy Efficiency Rating: C



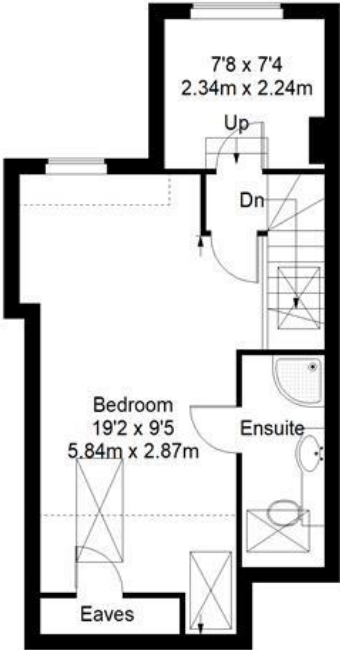
# Astonville Street




Ground Floor = 648 sq ft



First Floor = 460 sq ft



Second Floor = 356 sq ft

 = Reduced headroom below 1.5 m / 5'0

Approximate Gross Internal Area  
 GROUND FLOOR = 648 sq ft / 60.20 sq m  
 FIRST FLOOR = 460 sq ft / 42.73 sq m  
 SECOND FLOOR (Excluding Reduced Headroom) = 291 sq ft / 27.03 sq m  
 (Reduced Headroom) = 65 sq ft / 6.04sq m  
 Total = 1464 sq ft / 136.01 sq m



This plan is for layout guidance only. Not drawn to scale unless stated. Windows and door openings are approximate. Whilst every care is taken in the preparation of this plan, please check all dimensions, shapes and compass bearings before making any decisions reliant upon them. (ID357409)

