



Hotham Road, Putney
£1,850 pcm

Summary

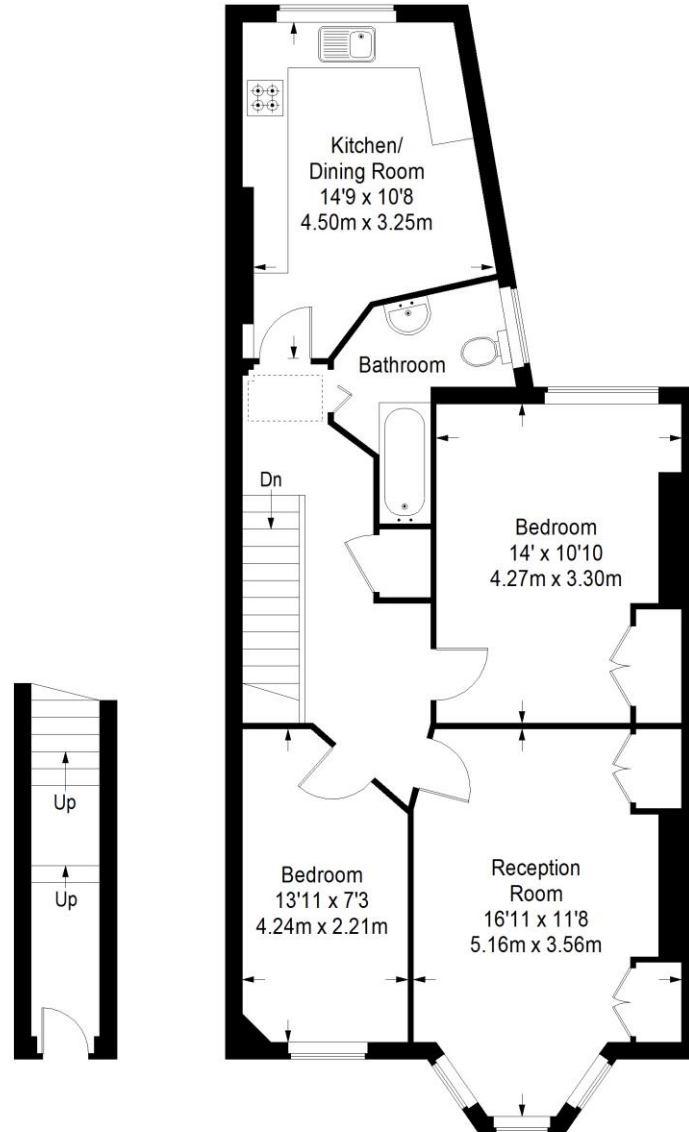
ABOUT THE PROPERTY; Brinkley's are pleased to offer this charming, two double bedroom, flat on Hotham Road in Putney. Located close to Putney High Street and all amenities, it is perfectly situated for access to East Putney Tube Station (District Line) and Putney, National Rail. The property comprises two double bedrooms, a bright and spacious living room, fully fitted kitchen and a modern shower room. The flat is tastefully redecorated and is offered as furnished.

HOW TO VIEW: Please call our Wimbledon Hill office on 020 8944 2918, our Wimbledon Park branch on 020 8879 3718 or our Putney office on 020 8785 3652, for more information and to arrange a viewing. Open 7 days a week. viewings Mon- Fri 8-8, Weekends 9-6.

Energy Efficiency Rating: E



Hotham Road



Ground Floor
Entrance = 47 sq ft

First Floor = 735 sq ft

Approximate Gross Internal Area
GROUND FLOOR = 47 sq ft / 4.37 sq m
FIRST FLOOR ENTRANCE = 735 sq ft / 68.28 sq m
Total = 782 sq ft / 72.65 sq m



This plan is for layout guidance only. Not drawn to scale unless stated. Windows and door openings are approximate. Whilst every care is taken in the preparation of this plan, please check all dimensions, shapes and compass bearings before making any decisions reliant upon them. (ID357409)

