



Willows Court, Sir Cyril Black Way, Wimbledon
£650,000

Summary

We are delighted to offer this unique mid-terraced house situated in a modern purpose built development in central Wimbledon.

This impressive accommodation is well presented and of a good size, which comprises two double bedrooms, spacious reception room, modern kitchen, one bathroom and downstairs WC.

It benefits from gas central heating, underfloor heating, double glazed windows, bi-folding patio doors onto a secluded private garden and allocated secure underground parking. Additional loft space with potential to expand and well maintained surrounding communal gardens.

The property is located within a 3-5 minute walking distance to Wimbledon station and town centre. Excellent transport links, 17 minutes to Waterloo including underground/over ground trains and tram.

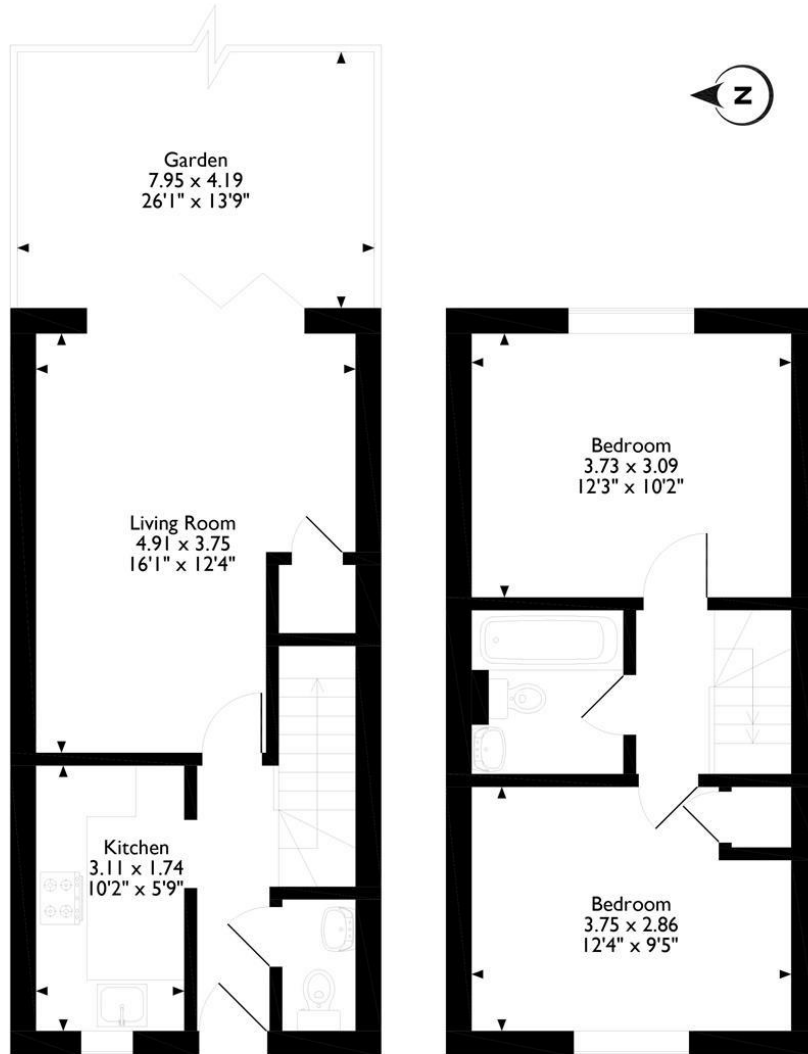
Early viewings recommended.

Please see the photographs that accompany this listing and the indicative floor plan. To fully appreciate this property please arrange a viewing appointment.

How to view: Please contact our Wimbledon Hill office on 0208 944 2918, Wimbledon Park office on 0208 879 3718 or our Putney office on 0208 785 3652 for more information or to book a viewing. We are open from 8:30am - 7pm Monday to Friday and 9am - 6pm on weekends. Sole Agents.



Sir Cyril Black Way, London



Ground Floor

First Floor

Please note that the location of doors, windows and other items are approximate and this floorplan is to be used for illustrative purposes only. Unauthorized reproduction is prohibited.

