



Garden Flat, Park Road, Colliers Wood
£425,000

Summary

About the property: The property comprises a spacious reception room with feature fireplace, master bedroom with plenty of storage, additional single bedroom, a modern good quality kitchen and bathroom with white suite. The property provides a private garden reaching over 50 feet with a modern summer house and workshop/store to the rear, ideal for an office/gym. There is also an additional storage room inside the flat.

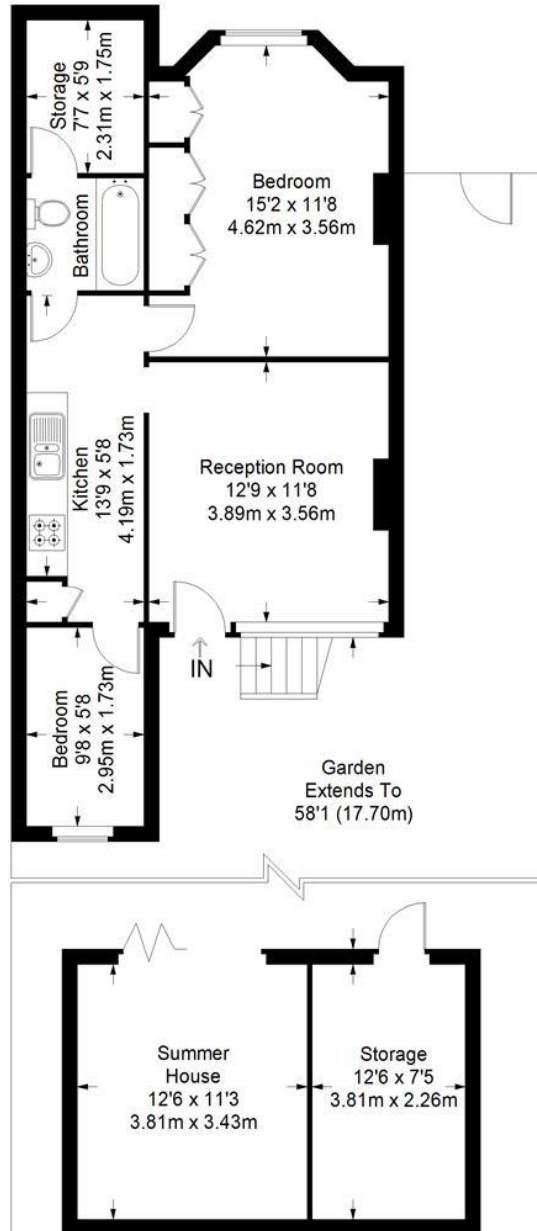
Location: Located on a sought after quiet residential street with a lot of community activities (annual street parties, colliers wood jumble trail). Property is close to excellent transport links with the Northern Line at Colliers Wood, a short walk to Tooting Rail station and on the main bus network. A short walk into the centre of Wimbledon (or a quick bus ride) with its

extensive retail and social offerings. A short walk from Tooting Braodway with a great selection of shops and restaurants – including Tooting and Broadway markets. Close to the well known Merton Abbey Mills Market and the River Wandle which has a Nuffield Health Club on site and the weekend Farmers & Craft market. The River Wandle and the open spaces of Morden Hall Park are close by.

How to view: Please contact our Wimbledon Hill office on 0208 944 2918, Wimbledon Park office on 0208 879 3718 or our Putney office on 0208 785 3652 for more information or to book a viewing. We are open from 8:30am - 7pm Monday to Friday and 9am - 6pm on weekends. Sole Agents.



Park Road



Ground Floor = 558 sq ft

Approximate Gross Internal Area
 GROUND FLOOR = 558 sq ft / 51.84 sq m
 SUMMER HOUSE/ STORAGE = 243 sq ft / 22.57 sq m
 Total = 801 sq ft / 74.41 sq m



This plan is for layout guidance only. Not drawn to scale unless stated. Windows and door openings are approximate. Whilst every care is taken in the preparation of this plan, please check all dimensions, shapes and compass bearings before making any decisions reliant upon them. (ID357409)

