



Flat, Kingston Road, Wimbledon Chase, Wimbledon
£1,400 pcm

Summary

NO TENANT FEES

ABOUT THE PROPERTY: Brinkley's are proud to present this modern, double bedroom apartment in a new build development, in this fantastic development. This spacious apartment features a separate luxury kitchen, stunning family bathroom, walking distance of Wimbledon Chase tube and close to all amenities. MUST BE SEEN. Ideal for professional tenants.

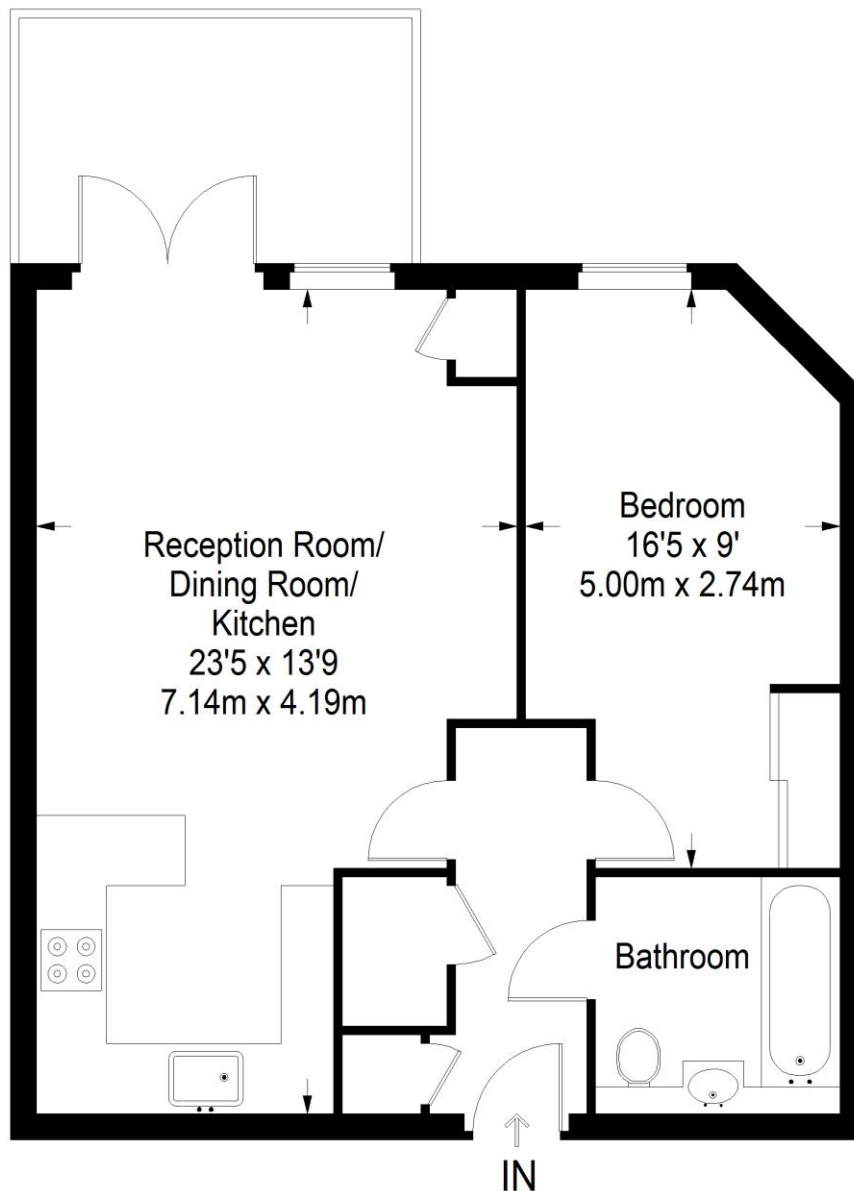
LOCATION: Kingston Road is a highly desirable area, with its green, leafy outlook and stunning local parks, you're only a short walk from Cannon Hill Common, it also boasts some of the best schools in the area.

HOW TO VIEW: Please call our Wimbledon Hill office on 020 8944 2918, our Wimbledon Park branch on 020 8879 3718 or our Putney office on 020 8785 3652, for more information and to arrange a viewing. Open 7 days a week. viewings Mon- Fri 8-8, Weekends 9-6.

Energy Efficiency Rating: B



Kingston Road



First Floor = 539 sq ft

Approximate Gross Internal Area
FIRST FLOOR = 539 sq ft / 50.07 sq m
Total = 539 sq ft / 50.07 sq m



This plan is for layout guidance only. Not drawn to scale unless stated. Windows and door openings are approximate. Whilst every care is taken in the preparation of this plan, please check all dimensions, shapes and compass bearings before making any decisions reliant upon them. (ID357409)

