



Flat, Fieldview, Earlsfield  
**£600,000**

**Summary**

About the property: This delightful ground floor apartment, offers over 700 sq ft of internal accommodation and a south-facing, private rear garden. There are three spacious bedrooms, separate modern fitted kitchen, spacious lounge/dining area and modern bathroom. Has quality oak flooring throughout.

Location: Fieldview is a small street that runs between Magdalen Road at one end and Burntwood Lane at the other. This particular property is ideally situated at the Magdalen Road end close to the highly regarded Beatrix Potter Primary School. Earlsfield Train Station is only 0.5 miles away and all the amenities of Garratt Lane, such as the pubs, cafes, restaurants

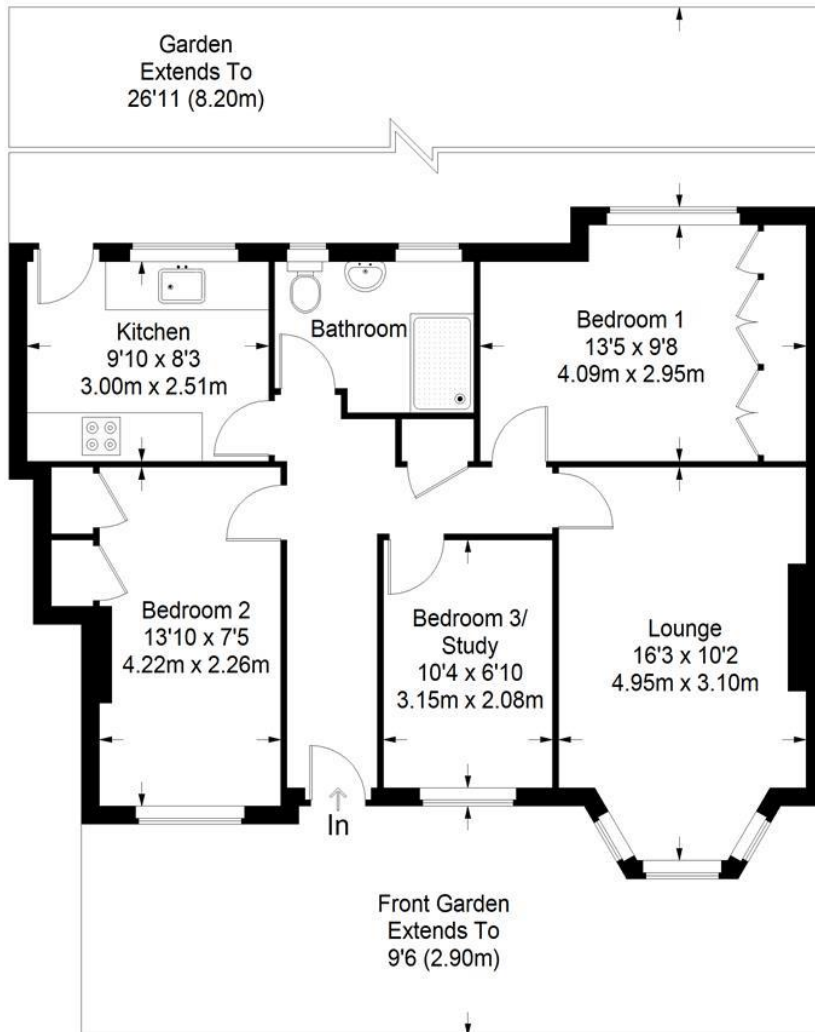
are all within easy reach, as is Wandsworth Common at the top of the hill and the Spencer Club with all its sporting facilities.

How to view: Please contact our Wimbledon Hill office on 0208 944 2918, Wimbledon Park office on 0208 879 3718 or our Putney office on 0208 785 3652 for more information or to book a viewing. We are open from 8:30am - 7pm Monday to Friday and 9am - 6pm on weekends. Sole Agents.

EPC: C



# Fieldview London



**Ground Floor = 711 sq ft**

Approximate Gross Internal Area  
GROUND FLOOR = 711 sq ft / 66.05 sq m  
Total = 711 sq ft / 66.05 sq m



This plan is for layout guidance only. Not drawn to scale unless stated. Windows and door openings are approximate. Whilst every care is taken in the preparation of this plan, please check all dimensions, shapes and compass bearings before making any decisions reliant upon them. (ID357409)

