



Flat, Hayward Gardens, Putney Heath, Putney
£285,000

Summary

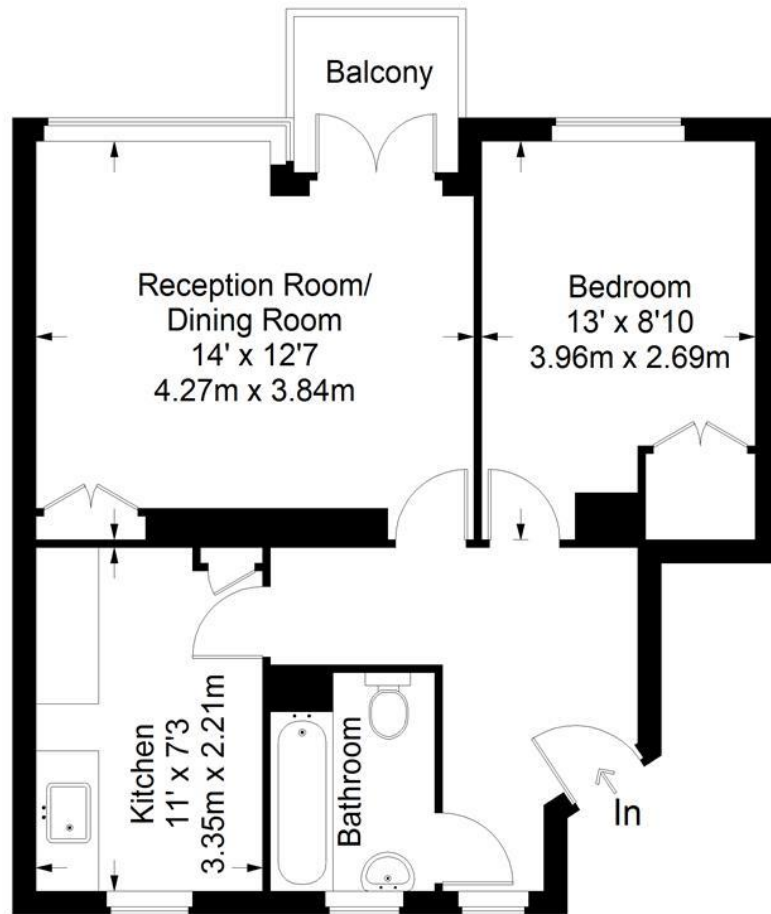
About the property: Offering almost 500sq ft of internal accommodation this one bedroom apartment would be ideal for a first time buyer. With a south-facing aspect and a private balcony overlooking the communal gardens. The property is offered with no onward chain.

Location: Located right on the edge of Putney Heath and within easy reach of the A3. Ideally located for access to Putney town centre. The green open spaces of Putney Heath leading onto Wimbledon Common and Richmond Park are a few steps away and local buses, Putney High Street, Putney mainline station and East Putney Tube are also close by.

How to view: Please contact our Wimbledon Hill office on 0208 944 2918, Wimbledon Park office on 0208 879 3718 or our Putney office on 0208 785 3652 for more information or to book a viewing. We are open from 8:30am - 7pm Monday to Friday and 9am - 6pm on weekends. Sole Agents.



Hayward Gardens



First Floor = 490 sq ft

Approximate Gross Internal Area
FIRST FLOOR = 490 sq ft / 45.52 sq m
Total = 490 sq ft / 45.52 sq m



This plan is for layout guidance only. Not drawn to scale unless stated. Windows and door openings are approximate. Whilst every care is taken in the preparation of this plan, please check all dimensions, shapes and compass bearings before making any decisions reliant upon them. (ID357409)

