



Flat, Durnsford Road, Wimbledon Park
£1,995 pcm

Summary

ABOUT THE PROPERTY: Brinkley's Estate Agents are delighted to offer this well presented, ground floor flat, located within easy reach of Wimbledon Park Underground Station (District Line). Briefly comprising; an entrance hall, a reception room, a fitted kitchen, two double bedrooms and a bathroom/ WC. Further benefits include gas central heating, and its own private rear garden.

LOCATION: The property is close to Wimbledon Park, Southfields Underground and Earlsfield National Rail and close to all local amenities. Close to schools in the Wimbledon Park area. This is an ideal family home or for working professionals. Wimbledon Park has some of the best selection of coffee shops and local restaurants.


HOW TO VIEW: Please call our Wimbledon Hill office on 020 8944 2918, our Wimbledon Park branch on 020 8879 3718 or our Putney office on 020 8785 3652, for more information and to arrange a viewing. Open 7 days a week. viewings Mon- Fri 8-8, Weekends 9-6.

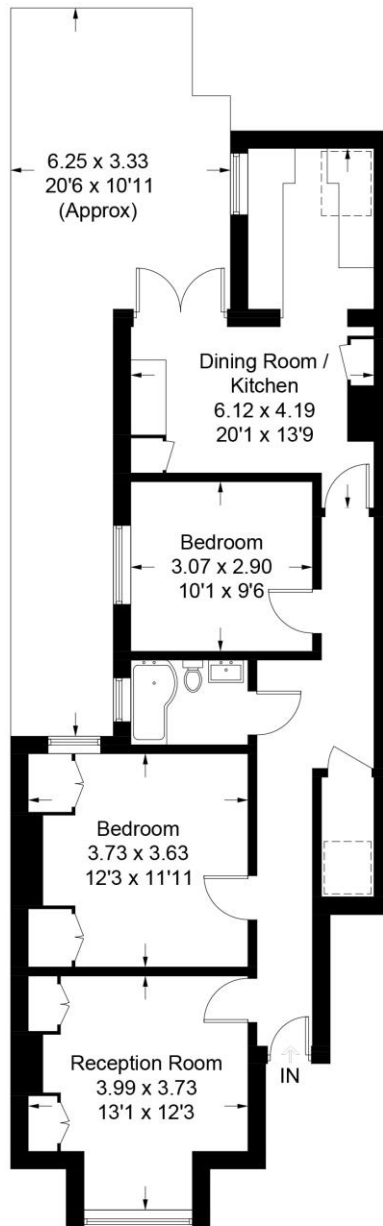
Energy Efficiency Rating: C



Durnsford Road

Approximate Gross Internal Area = 72.6 sq m / 781 sq ft

 = Reduced headroom below 1.5m / 5'0"



Ground Floor

Illustration for identification purposes only, measurements are approximate, not to scale. floorplansUsketch.com © (ID529478)

