



Flat, Pembroke House, Toland Square, Roehampton
£1,695 pcm

Summary

VIDEO TOURS AVAILABLE. PLEASE CALL 0208 944 2918 OR EMAIL info@brinkleys.co.uk FOR DETAILS

ABOUT THE PROPERTY: Brinkley's of Putney are pleased to offer this superb flat, located in the ever-popular Toland Square in Roehampton. With wooden floors throughout the apartment and comprised of three double bedrooms, large bathroom, separate kitchen area with plenty of storage throughout, this property is perfect for sharers or a growing family.

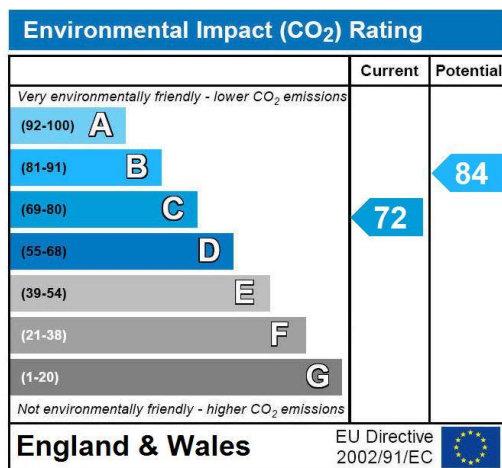
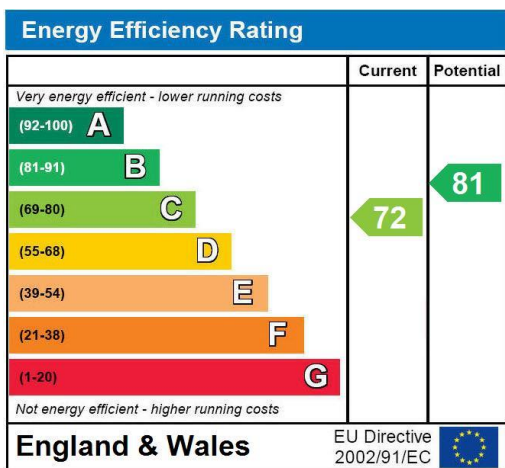
LOCATION: The property benefits from being moments away from stunning rural parks and amazing views - a very quiet and peaceful location, transport links are very good and your only moments away from local bus routes.



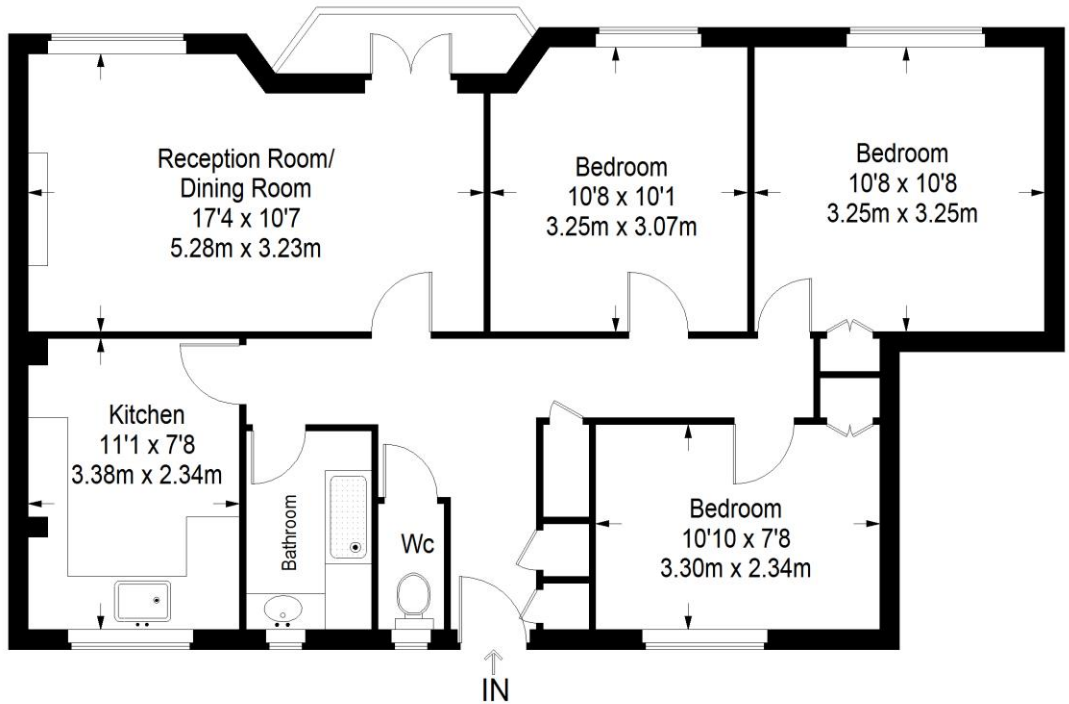
These particulars are intended to give a fair description of the property but their accuracy cannot be guaranteed, and they do not constitute an offer of contract. Intending purchasers must rely on their own inspection of the property. None of the above appliances/services have been tested by ourselves. We recommend purchasers arrange for a qualified person to check all appliances/services before legal commitment.

HOW TO VIEW: Please call our Wimbledon Hill office on 020 8944 2918, our Wimbledon Park branch on 020 8879 3718 or our Putney office on 020 8785 3652, for more information and to arrange a viewing. Open 7 days a week. viewings Mon- Fri 8-8, Weekends 9-6.

Energy Efficiency Rating: C



Pembroke House



First Floor = 759 sq ft

Approximate Gross Internal Area
FIRST FLOOR = 759 sq ft / 70.51 sq m
Total = 759 sq ft / 70.51 sq m



This plan is for layout guidance only. Not drawn to scale unless stated. Windows and door openings are approximate. Whilst every care is taken in the preparation of this plan, please check all dimensions, shapes and compass bearings before making any decisions reliant upon them. (ID357409)