



Flat, Stapleford Close, Southfields
£275,000

Summary

About the property: Brinkley's Estate Agents are pleased to present this spacious top floor flat. The property offers a spacious hallway with a storage cupboard, a large reception with space for a dining table, separate kitchen and a bathroom with shower facility. The property benefits from an abundance of natural light and is located in a quiet block, within a residential area.

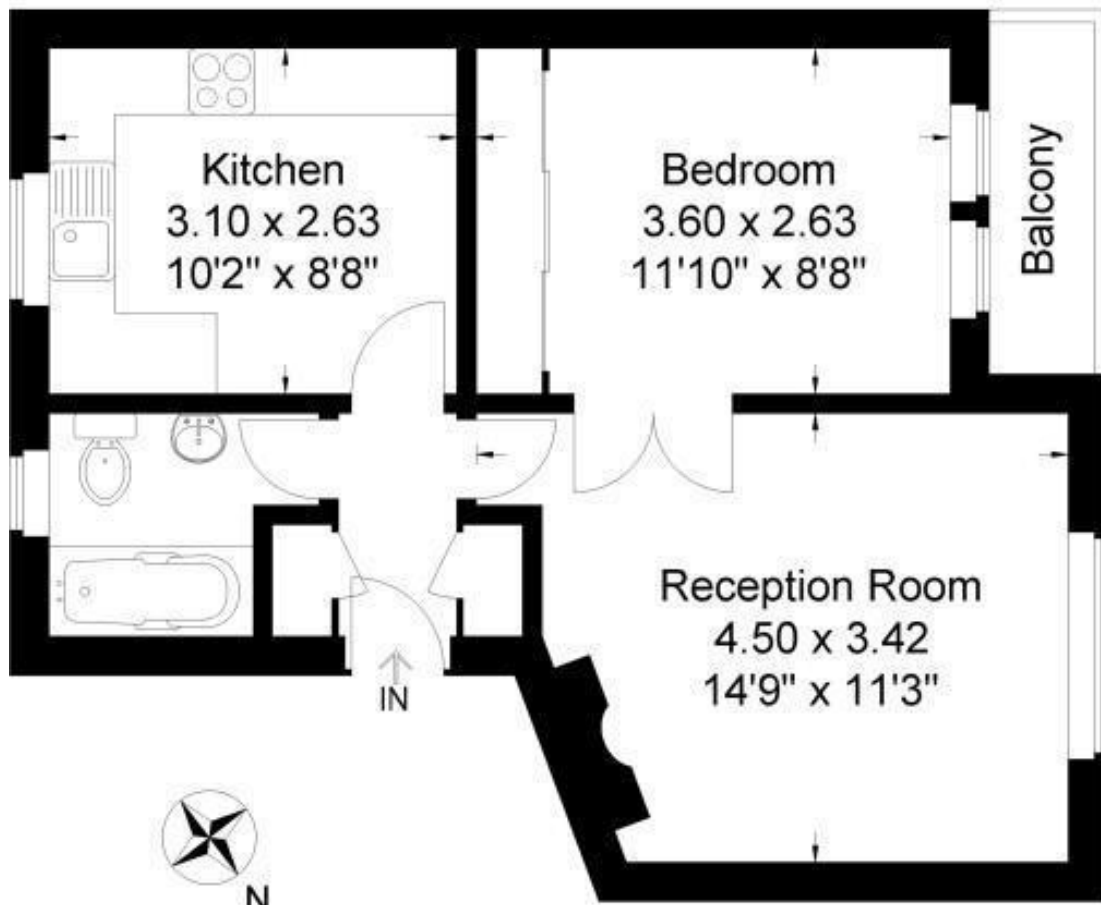
Location: Located a short walk from Southfields village and Tube station, with additional benefits including its close proximity to Wimbledon Park/Lake and the All England Tennis club and Wimbledon Common.

How to view: Please contact our Wimbledon Hill office on 0208 944 2918, Wimbledon Park office on 0208 879 3718 or our Putney office on 0208 785 3652 for more information or to book a viewing. We are open from 8:30am - 7pm Monday to Friday and 9am - 6pm on weekends. Sole Agents



Stapleford Close

Approximate Gross Internal Area
38.55 sq m / 414.94 sq ft



Second Floor

Illustration for identification purposes only, measurements are approximate, not to Scale

