



Flat, White Hart Lane, Barnes
£1,725 pcm

Summary

ABOUT THE PROPERTY: Brinkley's Estate Agents are pleased to bring to market this stunning, two double bedroom, ground floor apartment on White Hart Lane. Features of this lovely property include two double bedrooms with built-in storage, a modern kitchen and an open plan, living room, which leads out to a low-maintenance, secure garden. This property would best suit a couple or two professional sharers and is offered as un-furnished.

HOW TO VIEW: Please call our Wimbledon Hill office on 020 8944 2918, our Wimbledon Park branch on 020 8879 3718 or our Putney office on 020 8785 3652, for more information and to arrange a viewing. Open 7 days a week. viewings Mon- Fri 8-8, Weekends 9-6.



These particulars are intended to give a fair description of the property but their accuracy cannot be guaranteed, and they do not constitute an offer of contract. Intending purchasers must rely on their own inspection of the property. None of the above appliances/services have been tested by ourselves. We recommend purchasers arrange for a qualified person to check all appliances/services before legal commitment.

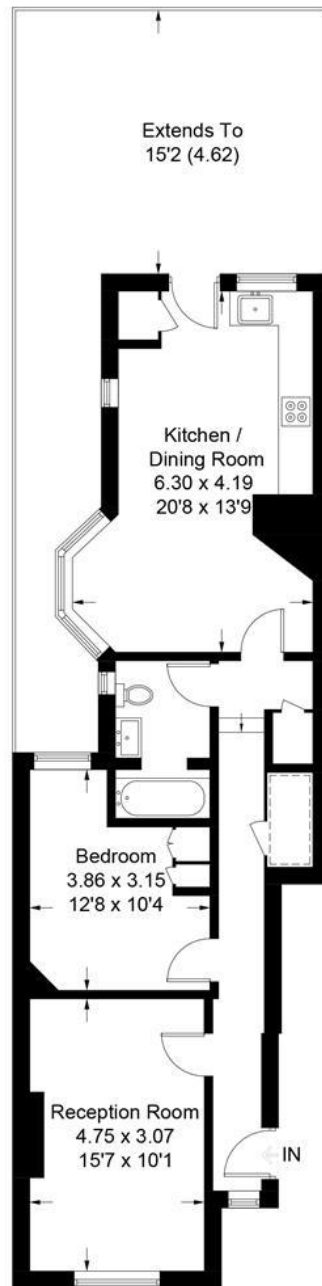
Energy Efficiency Rating: D



White Hart Lane

Approximate Gross Internal Area = 65.8 sq m / 708 sq ft

 = Reduced headroom below 1.5m / 5'0



Ground Floor

Illustration for identification purposes only, measurements are approximate, not to scale. floorplansUsketch.com © (ID527125)

