



Flat, Burlington Gate, Rothesay Avenue, Wimbledon
£1,500 pcm

Summary

VIDEO TOURS AVAILABLE - RESERVE YOUR NEW HOME TODAY - OPEN TO OFFERS -

<https://youtu.be/S-JRPolywJ0>

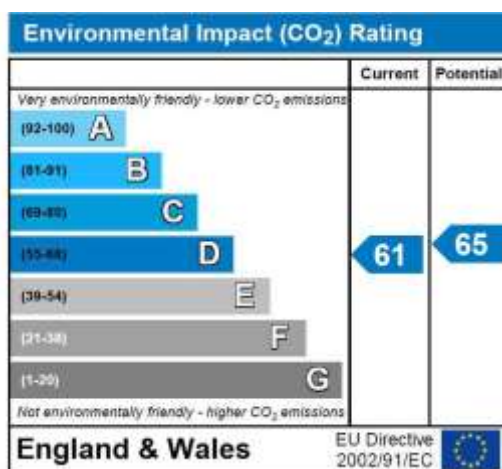
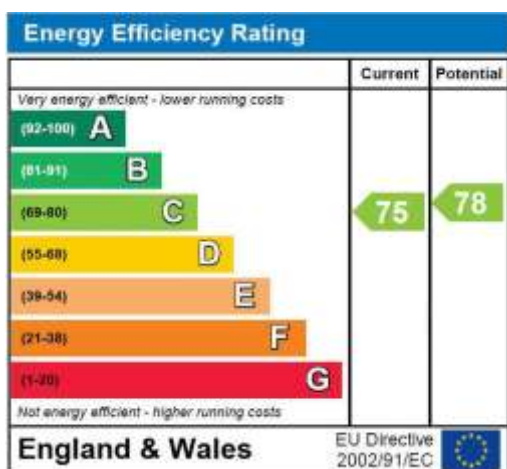
ABOUT THE PROPERTY: Brinkley's are proud to present this modern, two double bedroom apartment in Burlington Gate development, in this fantastic gated development. This spacious apartment features a separate luxury kitchen, stunning family bathroom and two double bedrooms. There's allocated secure parking to the property and it's within walking distance of Wimbledon Chase Station (NR) and close to all amenities. **MUST BE SEEN.** Ideal for professional tenants.

LOCATION: Rothesay Avenue is a highly desirable area, with its green leafy outlook and stunning local parks, you're only a short walk from Cannon Hill Common, it also boasts some of the best schools in the area.



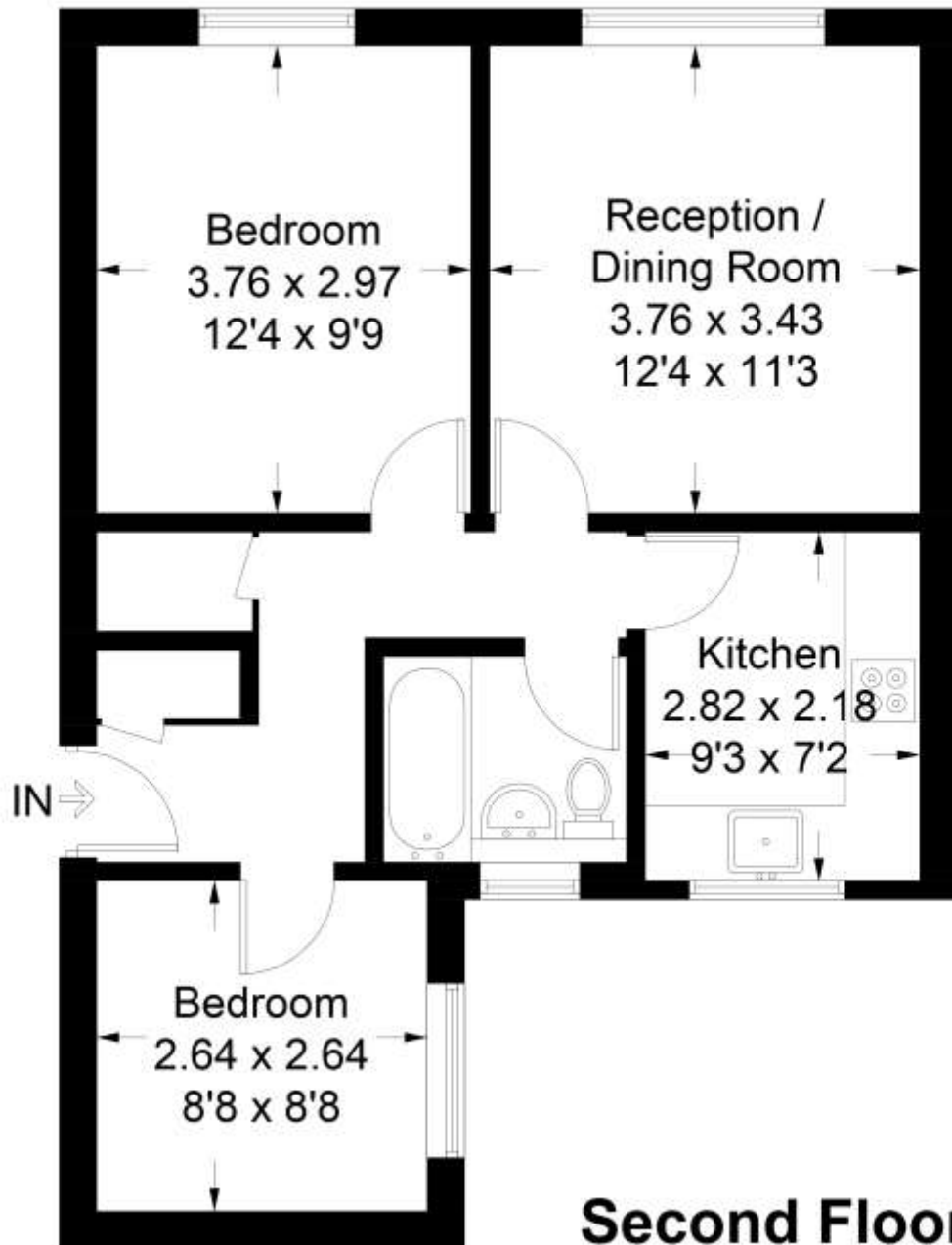
HOW TO VIEW: Please call our Wimbledon Hill office on 020 8944 2918, our Wimbledon Park branch on 020 8879 3718 or our Putney office on 020 8785 3652, for more information and to arrange a viewing. Open 7 days a week. viewings Mon- Fri 8-8, Weekends 9-6.

Energy Efficiency Rating: C



Burlington Gate

Approximate Gross Internal Area = 51.1 sq m / 550 sq ft



Second Floor

Illustration for identification purposes only, measurements are approximate, not to scale. floorplansUsketch.com © (ID 526298)