



Flat, Arnewood Close, Roehampton

£340,000

Summary

About the property: This purpose built flat offers two double bedrooms, with built-in wardrobes and a refurbished family bathroom with shower facility. The kitchen is separate with ample storage space, while the reception room has plenty of natural light and has South-facing views overlooking Richmond Park. The property is also offered chain free.

Location: Arnewood Close is a small purpose-built development off Alton Road, with excellent transport links close by including the A3 and regular bus routes to Putney, Kingston and Hammersmith. The bus stop moments away has bus

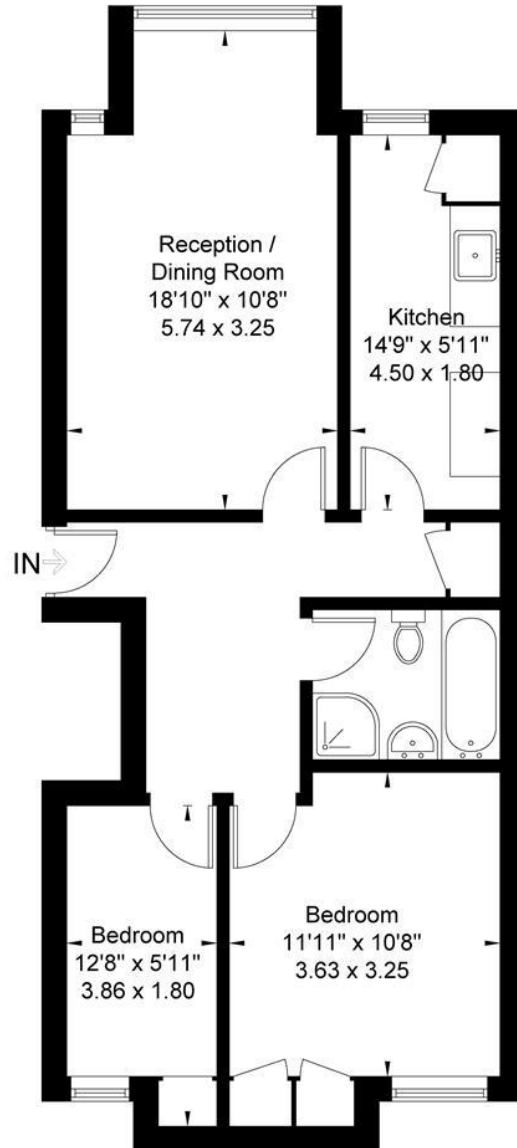
routes 72, 265, 85 (NIGHT BUS). The local Waitrose, Co-Op and a Gastro Pub are within walking distance and Richmond Park can be accessed through the Golf course within an approx. 15 minute walk.

How to view: Please contact our Wimbledon Hill office on 0208 944 2918, Wimbledon Park office on 0208 879 3718 or our Putney office on 0208 785 3652 for more information or to book a viewing. We are open from 8:30am - 7pm Monday to Friday and 9am - 6pm on weekends. Sole Agents.



Arnewood Close

Approximate Gross Internal Area = 60.5 sq m / 651 sq ft



First Floor

Illustration for identification purposes only, measurements are approximate, not to scale.

