



Flat, Cochrane Road, Wimbledon

£445,995

Summary

About the property: Brinkleys Estate Agents are delighted to present this ground floor, period conversion flat, to the market. The property offers a lovely front reception room with feature fireplace, a separate eat-in kitchen area with breakfast bar, a spacious double bedroom, a bathroom suite and a private, easily maintained patio garden.

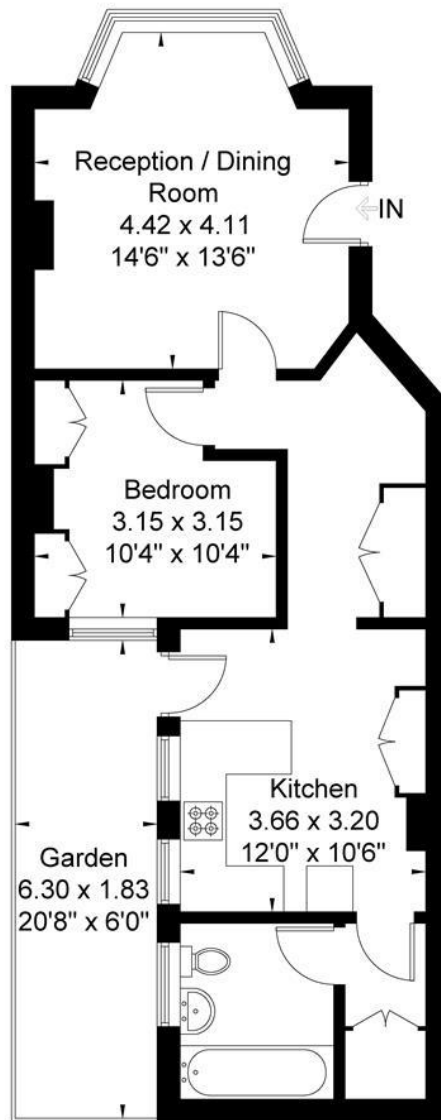
Location: Cochrane Road is next to Dundonald Park which has a newly developed playground, sport facility, and tennis courts. The flat is very well located for transport including Wimbledon mainline station, Wimbledon tube and tram link, while Wimbledon town centre has a great selection of shops, restaurants and local amenities.

How to view: Please contact our Wimbledon Hill office on 0208 944 2918, Wimbledon Park office on 0208 879 3718 or our Putney office on 0208 785 3652 for more information or to book a viewing. We are open from 8:30am - 7pm Monday to Friday and 9am - 6pm on weekends. Sole Agents



Cochrane Road

Approximate Gross Internal Area = 52.9 sq m / 571 sq ft



Ground Floor

Illustration for identification purposes only, measurements are approximate, not to scale.

