



Colborne Court, High Path, Wimbledon
£374,950

Summary

About the property: Brinkley's Estate Agents are delighted to bring to the market this beautifully presented apartment, situated on the ground floor of a modern, purpose-built block located in a quiet private development, moments from South Wimbledon Underground Station (Northern Line). The accommodation briefly comprises; an entrance hall, a reception room with open-plan and fully fitted, modern kitchen; two double bedrooms and modern bathroom/WC. Further benefits include a communal garden, double glazing, electric heating, solid wood flooring and direct access to communal gardens. This property would make an ideal First Time Buy or Rental Investment.

Location: The property is located approximately two minutes walk from South Wimbledon tube for the Northern Line, approximately 15 minutes walk to Wimbledon station for the District Line and frequent train services to Waterloo, approximately 15 minutes walk to Wimbledon town centre with its shopping, cinemas, bars and restaurants and approximately five minutes walk to Sainsbury's, Marks and Spencer, Merton Abbey Mills. Also easy access to Morden Hall Park.

How to view: Please contact our Wimbledon Hill office on 0208 944 2918, Wimbledon Park office on 0208 879 3718 or our Putney office on 0208 785 3652 for more information or to book a viewing. We are open from 8:30am - 7pm Monday to Friday and 9am - 6pm on weekends. Sole Agents



Colborne Court High Path

Approximate Gross Internal Area = 58.8 sq m / 632 sq ft

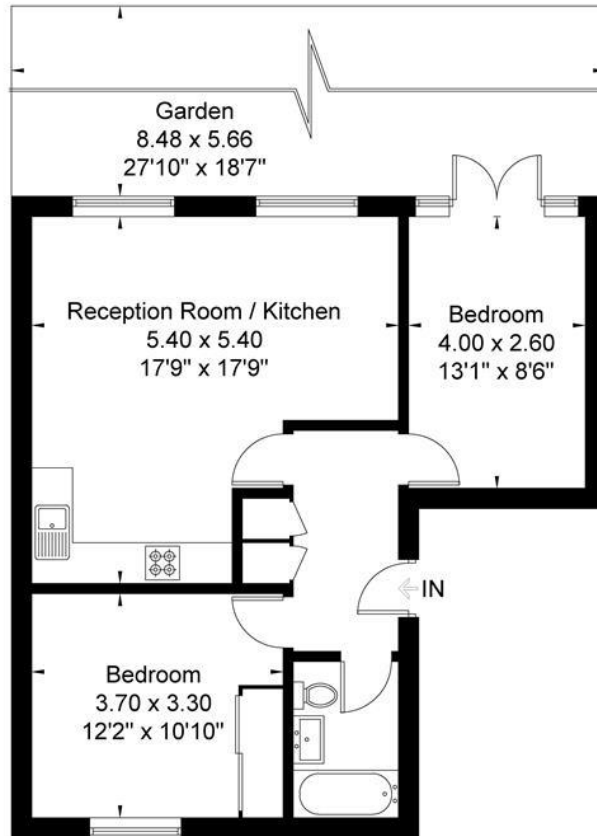


Illustration for identification purposes only, measurements are approximate, not to scale.

