



Durnsford Avenue, Wimbledon Park  
**£925,000**

**Summary**

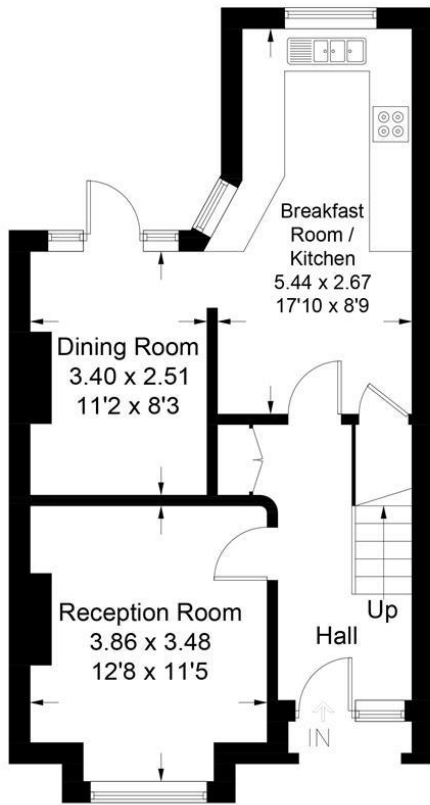
Brinkley's Estate Agents are delighted to offer this well presented, Edwardian, terraced house situated in the sought after, Durnsford Avenue within the Wimbledon Park 'Grid'. The house is located a short walk from the green, open spaces of Wimbledon Park itself and all of Wimbledon Park's local shopping/travelling facilities. This includes Wimbledon Park Underground Station (0.51 miles), Earlsfield Railway Station (0.85 miles) and Southfields Underground Station (0.86 miles). The property comprises an entrance hall, front reception room, a kitchen area, dining room and the upstairs offers two double bedrooms, a family bathroom and a further single room. Further benefits include a south-west-facing, rear garden, further potential to extend loft and rear (STPP), it is within the priority catchment area for Wimbledon Park Primary

School and is offered chain free. Please call Brinkley's in Wimbledon Park on 0208 879 3718 for more details or to arrange a viewing.

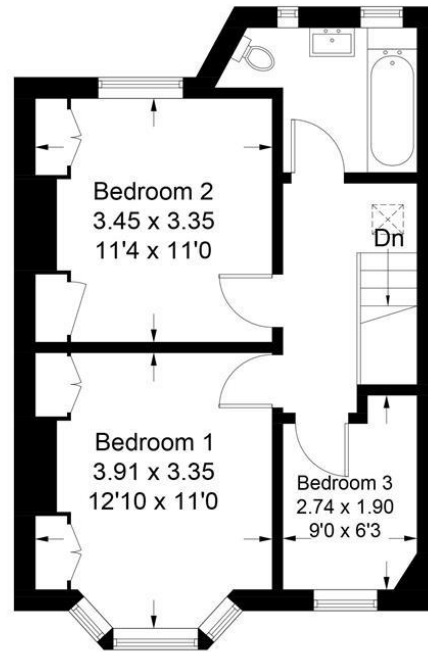


# Durnsford Avenue, SW19

Approximate Gross Internal Area = 86.5 sq m / 931 sq ft



**Ground Floor**



**First Floor**

Illustration for identification purposes only, measurements are approximate, not to scale. FloorplansUsketch.com © 2018 (ID501198)

