



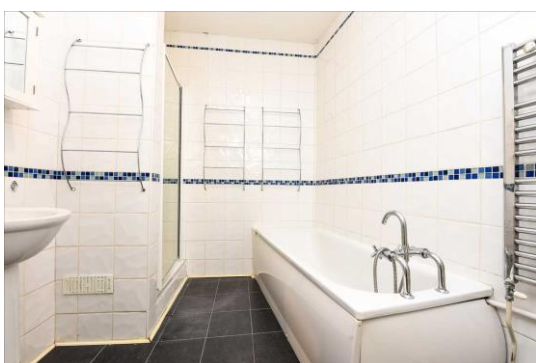
Flat, Trafalgar Road, Wimbledon
£405,000

Summary

About the property: Brinkleys Estate Agents are delighted to present this ground floor, period conversion flat, to the market. This property comprises a spacious lounge, a kitchen/breakfast area and a family bathroom and a private, stunning rear garden. Offering over 700 sq ft of internal accommodation and basement. Offered with no onward chain.

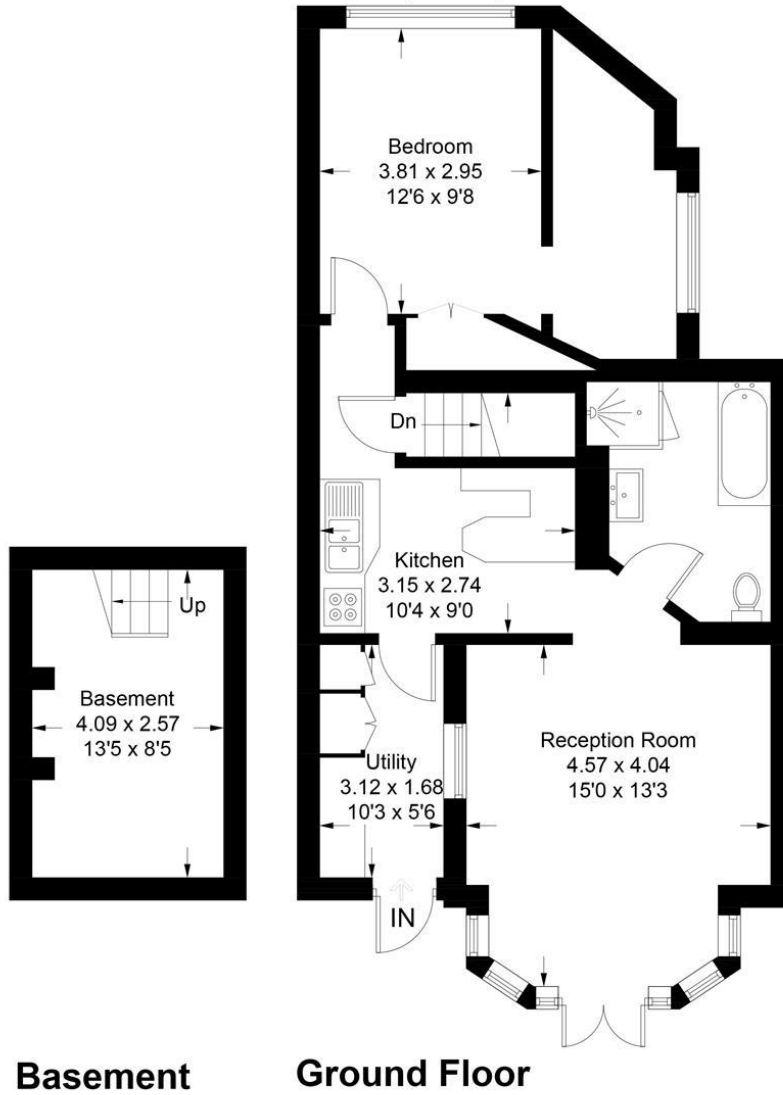
Location: Trafalgar Road set within the sought after Battles area of Wimbledon. The flat is very well located for transport including Wimbledon mainline station, South Wimbledon tube (Northern Line), while Wimbledon town centre has a great selection of shops, restaurants and local amenities.

How to view: Please contact our Wimbledon Hill office on 0208 944 2918, Wimbledon Park office on 0208 879 3718 or our Putney office on 0208 785 3652 for more information or to book a viewing. We are open from 8:30am - 7pm Monday to Friday and 9am - 6pm on weekends. Sole Agents



Trafalgar Road, SW19

Approximate Gross Internal Area = 65.2 sq m / 702 sq ft
Basement = 10.4 sq m / 112 sq ft
Total = 75.6 sq m / 814 sq ft



Basement

Ground Floor

Illustration for identification purposes only, measurements are approximate, not to scale. FloorplansUsketch.com © 2018 (ID500361)

