



Apartment, Bennets Courtyard, Watermill Way, Colliers Wood  
**£450,000**

**Summary**

Brinkley's Estate Agents are pleased to present this fantastic, two bedroom, two bathroom, dual aspect, apartment situated on the top (third) floor of this highly sought after, award winning, development adjacent to the River Wandle. The property comprises an entrance hall with storage cupboard, two spacious double bedrooms, with one en-suite shower room, a separate bathroom and a stunning open-plan kitchen living area, with dual aspect windows overlooking the podium communal garden.

Bennets Courtyard is part of the Abbey Mills development, situated next to the well known Merton Abbey Mills Market and River Wandle. With Nuffield Health Club on site and the weekend Farmers & Craft market. The River Wandle and the open spaces of Morden Hall Park are close by.

Excellent transport links with the Northern Line at Colliers Wood, Tram link nearby and on the main bus network. A short walk into the centre of Wimbledon (or a quick bus ride) with its extensive retail and social offering. Great retail shopping with many high street names in the Tandem Centre including a Starbucks Coffee Store. Allocated parking included.

To view this delightful instruction, please contact Brinkley's Estate Agents on 0208 944 2918. Sole Agents



# Bennett's Courtyard, SW19

Approximate Gross Internal Area = 72.2 sq m / 777 sq ft

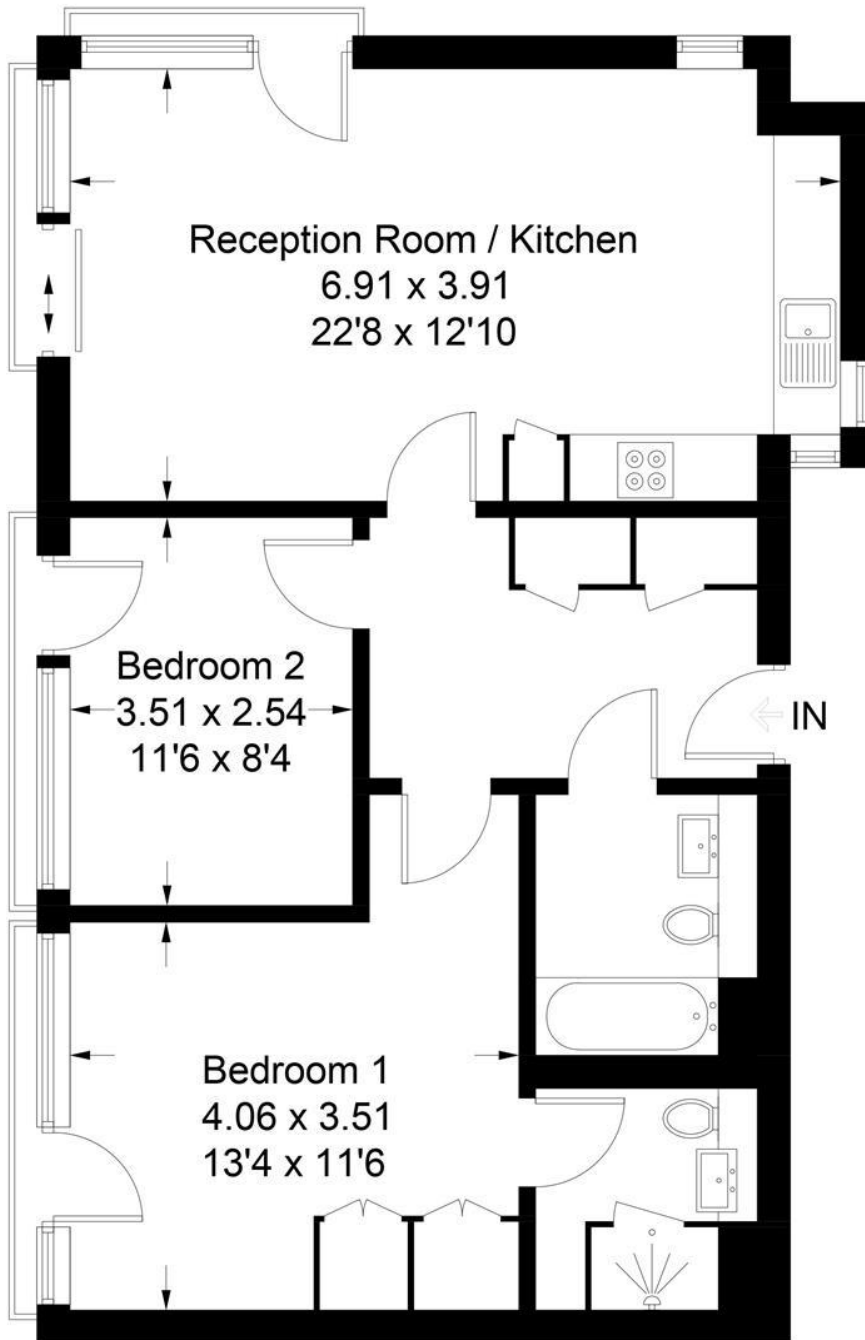


Illustration for identification purposes only, measurements are approximate, not to scale. FloorplansUsketch.com © 2018 (ID498897)

