



Flat, Urmston Drive, Southfields

**£415,000**

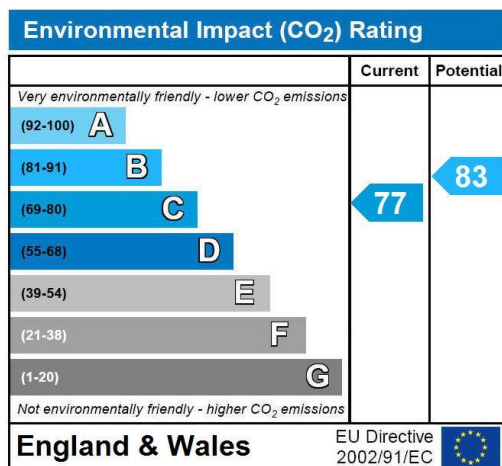
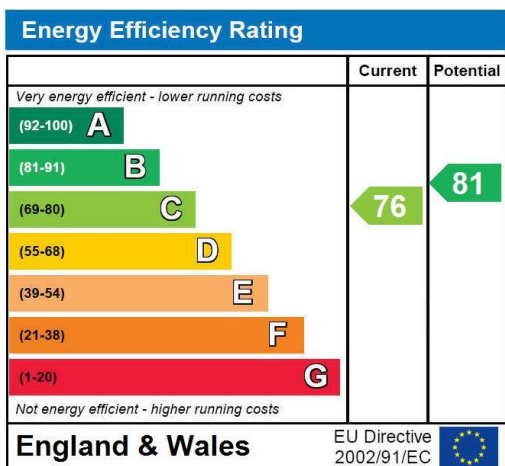
### **Summary**

Brinkley's Estate Agents are delighted to offer this spacious, first floor, purpose-built apartment, in a convenient location in Southfields. Offering stunning central London views. Accommodation delivers a sweeping hallway with built in storage, three sizeable double bedrooms, two bathrooms, fitted kitchen and a generously sized lounge/dining room. The flat is an ideal investment opportunity.

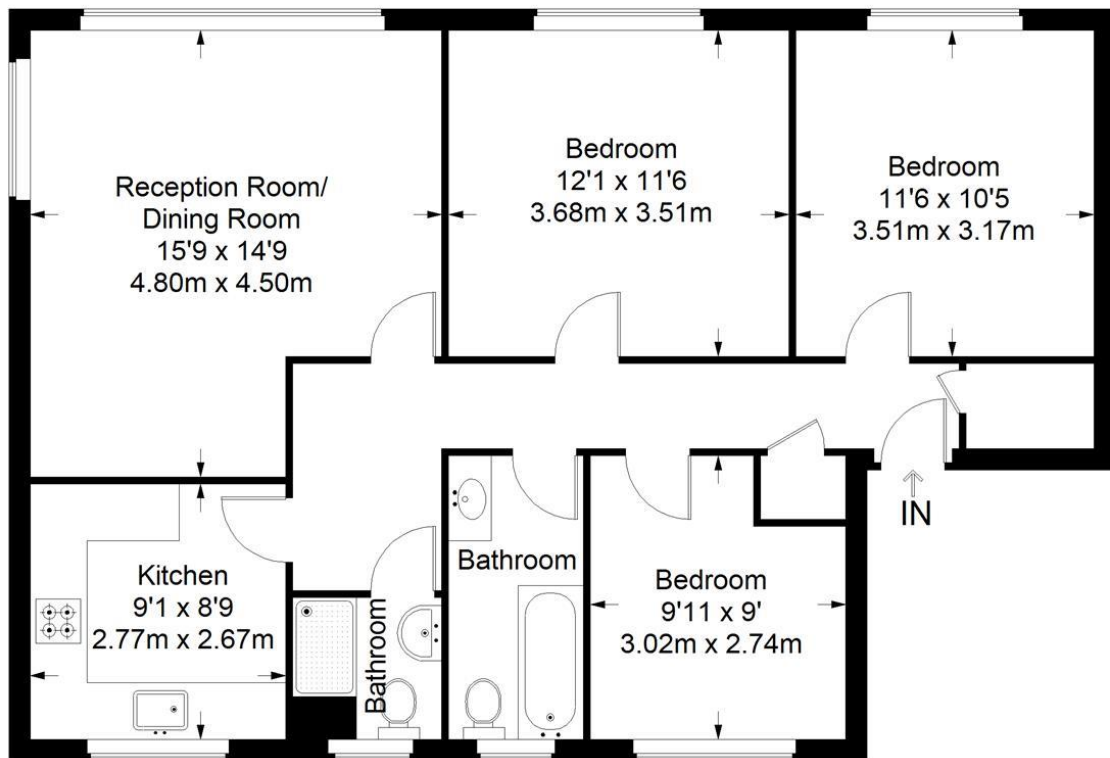
Further benefits include, residents parking, communal garden, no onward chain, long lease and gas central heating.

Within walking distance is Southfields Tube Station, important bus/road links including the A3, the expansive Wimbledon

Common and the ample shops, bars and restaurants or Southfields itself. To view, please call The Brinkley's team on 0208 944 2918. Sole Agents



# Urmston Drive



**First Floor = 849 sq ft**

Approximate Gross Internal Area  
FIRST FLOOR = 849 sq ft / 78.87 sq m  
Total = 849 sq ft / 78.87 sq m



This plan is for layout guidance only. Not drawn to scale unless stated. Windows and door openings are approximate. Whilst every care is taken in the preparation of this plan, please check all dimensions, shapes and compass bearings before making any decisions reliant upon them. (ID357409)