



Flat, IbeX House, Arthur Road, Wimbledon Park
£392,000

Summary

***** STUNNING MODERN BUILD ONE BEDROOM APARTMENT *****

Brinkley's Estate Agents in Wimbledon Park are delighted to offer this stunning, modern build, one bedroom, apartment on the first floor of this popular purpose built block, situated a moments walk from Wimbledon Park Underground Station (District Line). This property is ideally located within Wimbledon Park with its excellent local shops and amenities. Earlsfield mainline station and Wimbledon town centre are also within easy reach.



These particulars are intended to give a fair description of the property but their accuracy cannot be guaranteed, and they do not constitute an offer of contract. Intending purchasers must rely on their own inspection of the property. None of the above appliances/services have been tested by ourselves. We recommend purchasers arrange for a qualified person to check all appliances/services before legal commitment.

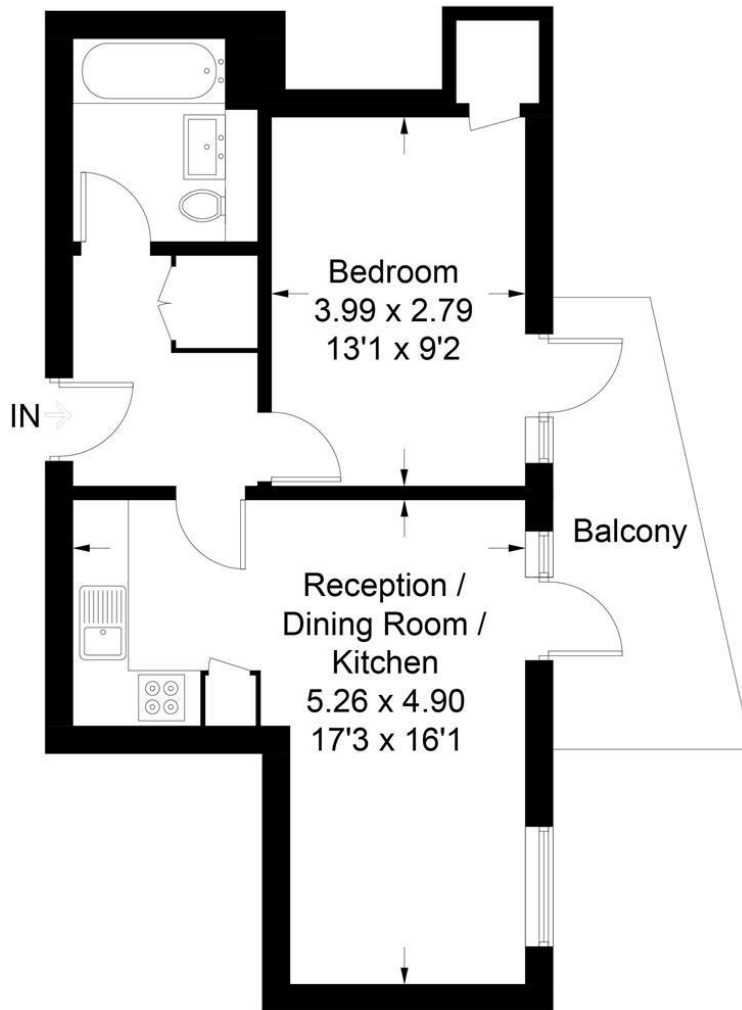
This bright and airy apartment briefly comprises; an entrance hall, a reception room with a modern, open-plan and fully-fitted kitchen, one double bedroom and a bathroom/WC also has the added benefit of a private balcony. Further benefits of this stunning property include a communal lift, electric heating and double glazing.

Offered chain free, this property would make an ideal First Time Buy or rental investment. For more information or to arrange an early viewing, please call Brinkley's in Wimbledon Park on 02088793718 or Wimbledon Hill on 02089442918, today. Main Agent.



Arthur Road, SW19

Approximate Gross Internal Area = 42.5 sq m / 457 sq ft



First Floor

Illustration for identification purposes only, measurements are approximate, not to scale. FloorplansUsketch.com © 2018 (ID 476872)

