



Flat, Burghley House, Wimbledon Village
£750,000

Summary

With wonderful views, this bright and spacious apartment on the third floor of a prestigious, portered, private development is situated close to the world famous All England Lawn Tennis Club.

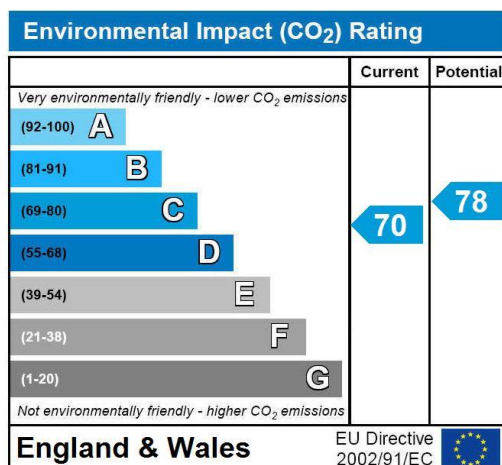
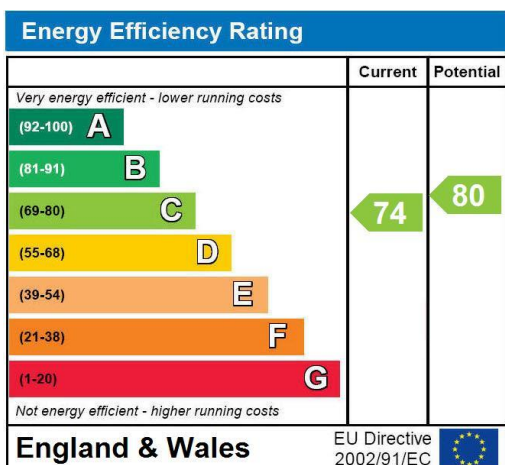
This bright and spacious apartment has excellent storage space. An early appointment to view is highly recommended. Further benefits include a private garage, a balcony, parking, stunning views and no onward chain.

The property is situated within the private Oakfield Estate adjoining the All England Lawn Tennis Club. Wimbledon Common is approximately 1/4 of a mile away and Wimbledon Village with its attractive High Street lined with a select



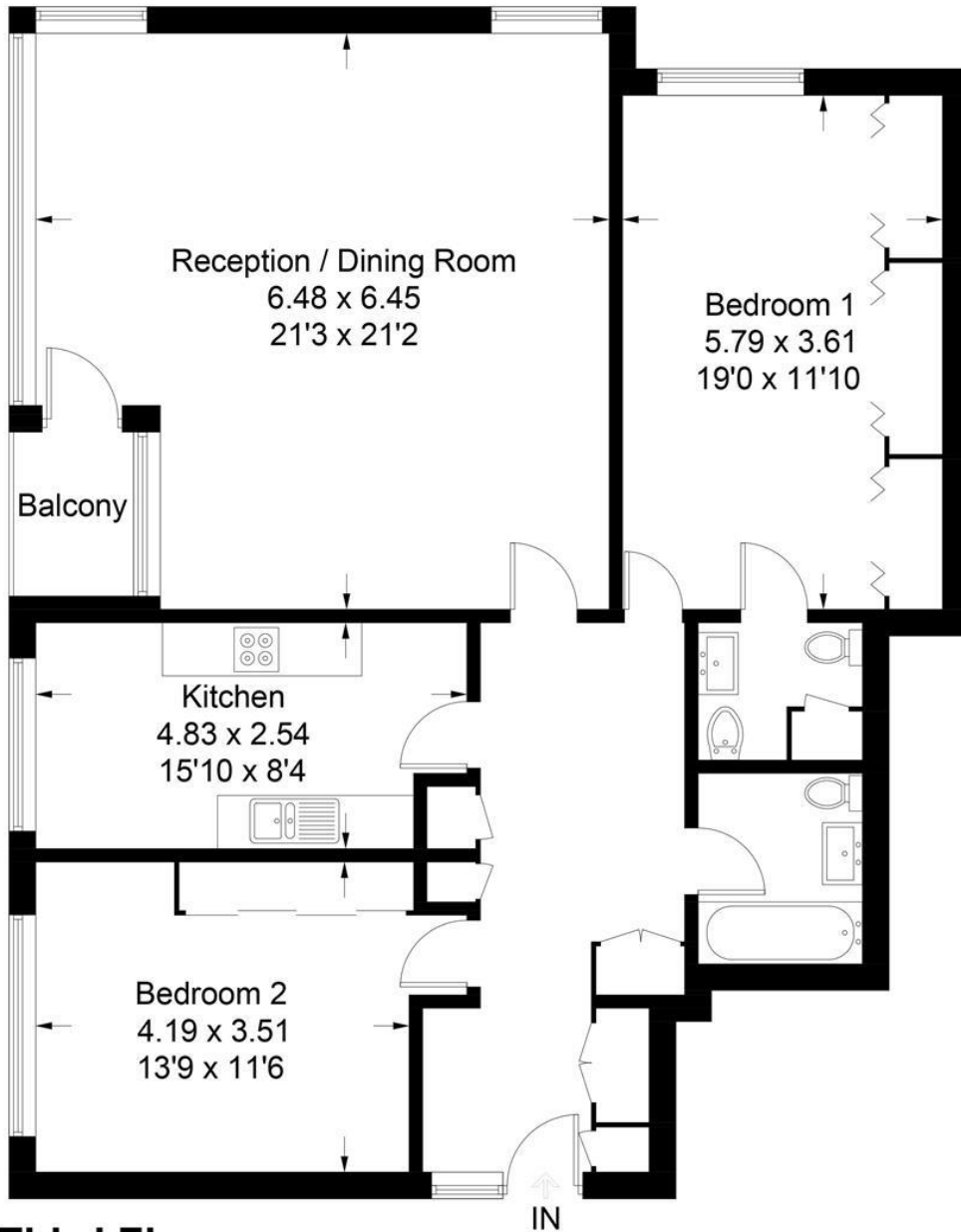
These particulars are intended to give a fair description of the property but their accuracy cannot be guaranteed, and they do not constitute an offer of contract. Intending purchasers must rely on their own inspection of the property. None of the above appliances/services have been tested by ourselves. We recommend purchasers arrange for a qualified person to check all appliances/services before legal commitment.

range of shops, cafes and restaurants is approximately 1/3 of a mile distant. Wimbledon Rail station provides a fast service into London Waterloo (19 minutes). Please contact Brinkley's Estate Agents on 0208 944 2918. Sole Agents



Burghley House, SW19

Approximate Gross Internal Area = 114.1 sq m / 1228 sq ft



Third Floor

Illustration for identification purposes only, measurements are approximate, not to scale. FloorplansUsketch.com © 2018 (ID459711)