

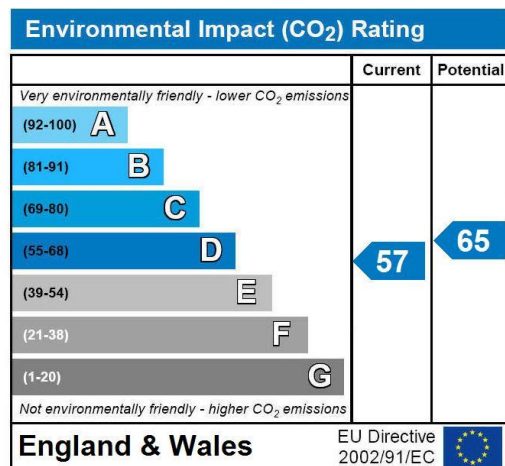
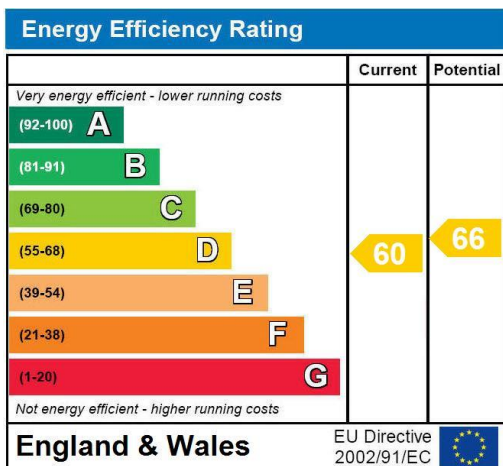


Maisonette, Home Park Road, Wimbledon Park  
**£575,000**

**Summary**

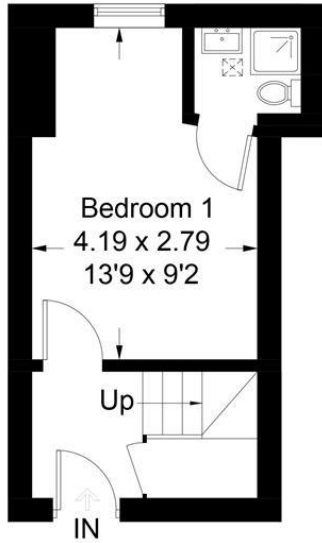
Brinkley's Estate Agents are pleased to be able to offer to the open market, this beautifully presented, split-level, period conversion apartment in a conveniently located residential road in Wimbledon Park. First floor accommodation delivers an entrance hallway, two double bedrooms both with en-suites, an open-plan fitted kitchen/dining room/lounge and a separate WC. The property is offered with no onward chain. Within close proximity to Wimbledon Park Tube Station, superb bus links, great local shops, delicatessens, Wimbledon Village and the open expanses of Wimbledon Park itself. To view, please call the Brinkley's Wimbledon Park Team on 0208 879 3718.

Open 7 days a week; please call to make an appointment.

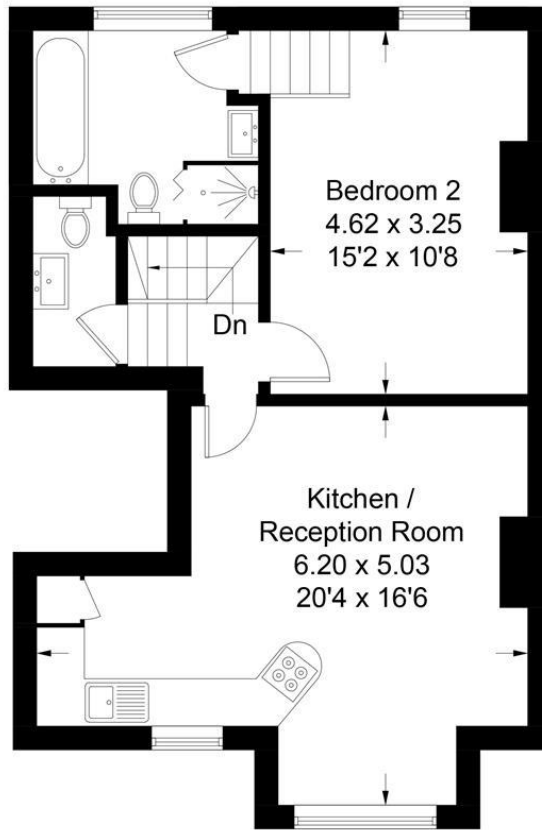


# Home Park Road ,SW19

Approximate Gross Internal Area = 69.6 sq m / 749 sq ft



**First Floor**



**Second Floor**

Illustration for identification purposes only, measurements are approximate, not to scale. FloorplansUsketch.com © 2018 (ID456738)