



Quinton Street, Earlsfield

£835,000

Summary

Brinkley's Estate Agents are delighted to offer this beautifully presented, Edwardian maisonette to the market. Situated on one of Earlsfield's most prestigious roads and a short distance from Earlsfield mainline station, offering access directly into central London, key road/bus links and the areas abundant shops, restaurants and social facilities. The property briefly comprises a private entrance via new stain glass door, the first floor offers bright, spacious lounge/dining area with feature

149 Arthur Road, Wimbledon Park, SW19 8AB

T: 020 8879 3718

168 Putney High Street, Putney, SW15 1RS

T: 020 8785 3652

120 Wimbledon Hill Road, Wimbledon, SW19 7QU

T: 020 8944 2918



These particulars are intended to give a fair description of the property but their accuracy cannot be guaranteed, and they do not constitute an offer of contract. Intending purchasers must rely on their own inspection of the property. None of the above appliances/services have been tested by ourselves. We recommend purchasers arrange for a qualified person to check all appliances/services before legal commitment.



fireplace, double bedroom with fitted wardrobe, bedroom ideal as office/nursery, modern family bathroom with shower facility, fully fitted kitchen/dining area with direct access to the south facing rear garden, with two decked areas offering entertaining space from am to pm. The top floor offers a further double bedroom, modern bathroom with shower cubicle and the master bedroom. Further benefits include no chain, share of freehold, lots of storage, new double glazed sash windows throughout and over 1500 sq ft of internal accommodation. To view this delightful instruction, please contact us on 0208 879 3718. Sole Agents



149 Arthur Road, Wimbledon Park, SW19 8AB
168 Putney High Street, Putney, SW15 1RS
120 Wimbledon Hill Road, Wimbledon, SW19 7QU

T: 020 8879 3718
T: 020 8785 3652
T: 020 8944 2918



These particulars are intended to give a fair description of the property but their accuracy cannot be guaranteed, and they do not constitute an offer of contract. Intending purchasers must rely on their own inspection of the property. None of the above appliances/services have been tested by ourselves. We recommend purchasers arrange for a qualified person to check all appliances/services before legal commitment.

Quinton Street, SW18

Approximate Gross Internal Area = 140.4 sq m / 1511 sq ft
(Excluding Eaves)

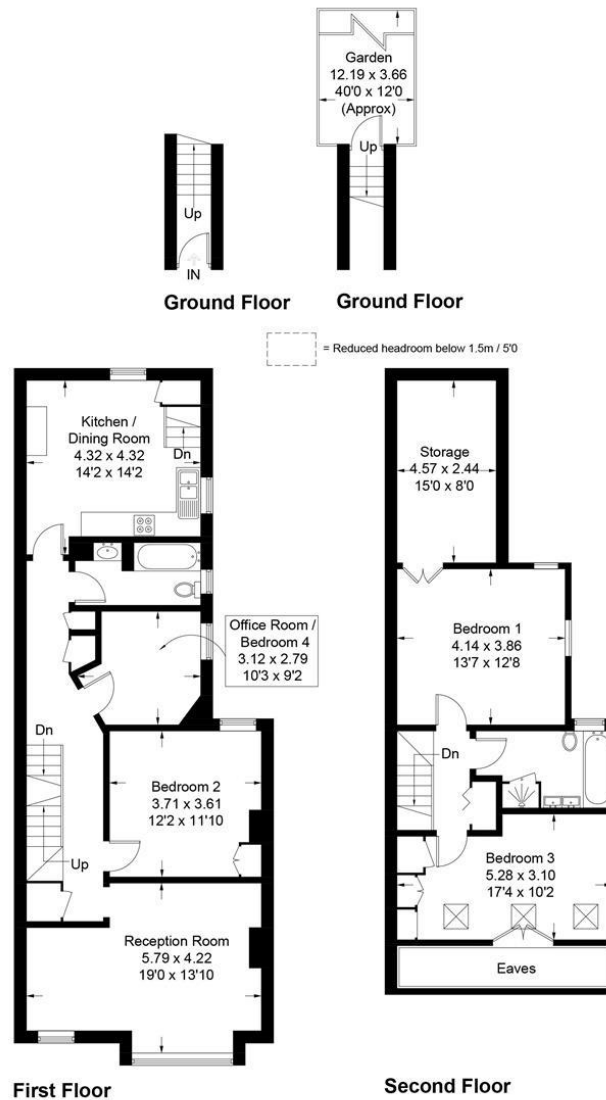


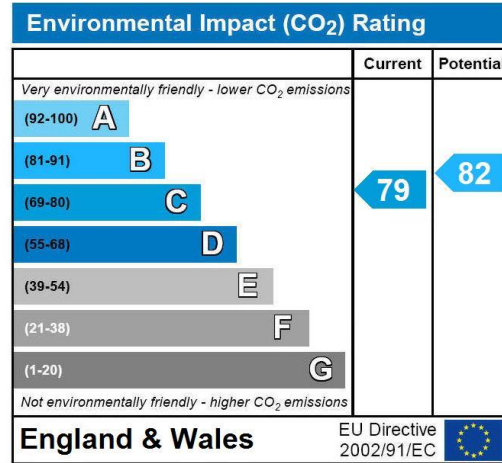
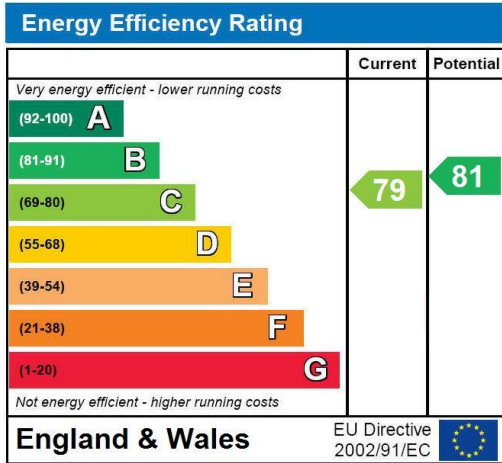
Illustration for identification purposes only, measurements are approximate, not to scale. FloorplansUsketch.com © 2018 (ID437008)

149 Arthur Road, Wimbledon Park, SW19 8AB
168 Putney High Street, Putney, SW15 1RS
120 Wimbledon Hill Road, Wimbledon, SW19 7QU

T: 020 8879 3718
T: 020 8785 3652
T: 020 8944 2918



These particulars are intended to give a fair description of the property but their accuracy cannot be guaranteed, and they do not constitute an offer of contract. Intending purchasers must rely on their own inspection of the property. None of the above appliances/services have been tested by ourselves. We recommend purchasers arrange for a qualified person to check all appliances/services before legal commitment.



149 Arthur Road, Wimbledon Park, SW19 8AB T: 020 8879 3718
 168 Putney High Street, Putney, SW15 1RS T: 020 8785 3652
 120 Wimbledon Hill Road, Wimbledon, SW19 7QU T: 020 8944 2918



These particulars are intended to give a fair description of the property but their accuracy cannot be guaranteed, and they do not constitute an offer of contract. Intending purchasers must rely on their own inspection of the property. None of the above appliances/services have been tested by ourselves. We recommend purchasers arrange for a qualified person to check all appliances/services before legal commitment.