



Flat, Marian Lodge, The Downs, Wimbledon
£475,000

Summary

Brinkley's Estate Agents are delighted to offer this beautifully presented, ground floor, one bedroom flat, located on the slopes of Wimbledon, within a sought-after, gated development and within close proximity to Wimbledon Common, Wimbledon Village and Wimbledon town centre.

The property is comprised of a fully fitted kitchen, separate lounge area with ample room for dining table, plus views over the communal gardens, en-suite bathroom, guest cloakroom, a large double bedroom with en-suite bathroom with walk in shower cubicle.



These particulars are intended to give a fair description of the property but their accuracy cannot be guaranteed, and they do not constitute an offer of contract. Intending purchasers must rely on their own inspection of the property. None of the above appliances/services have been tested by ourselves. We recommend purchasers arrange for a qualified person to check all appliances/services before legal commitment.

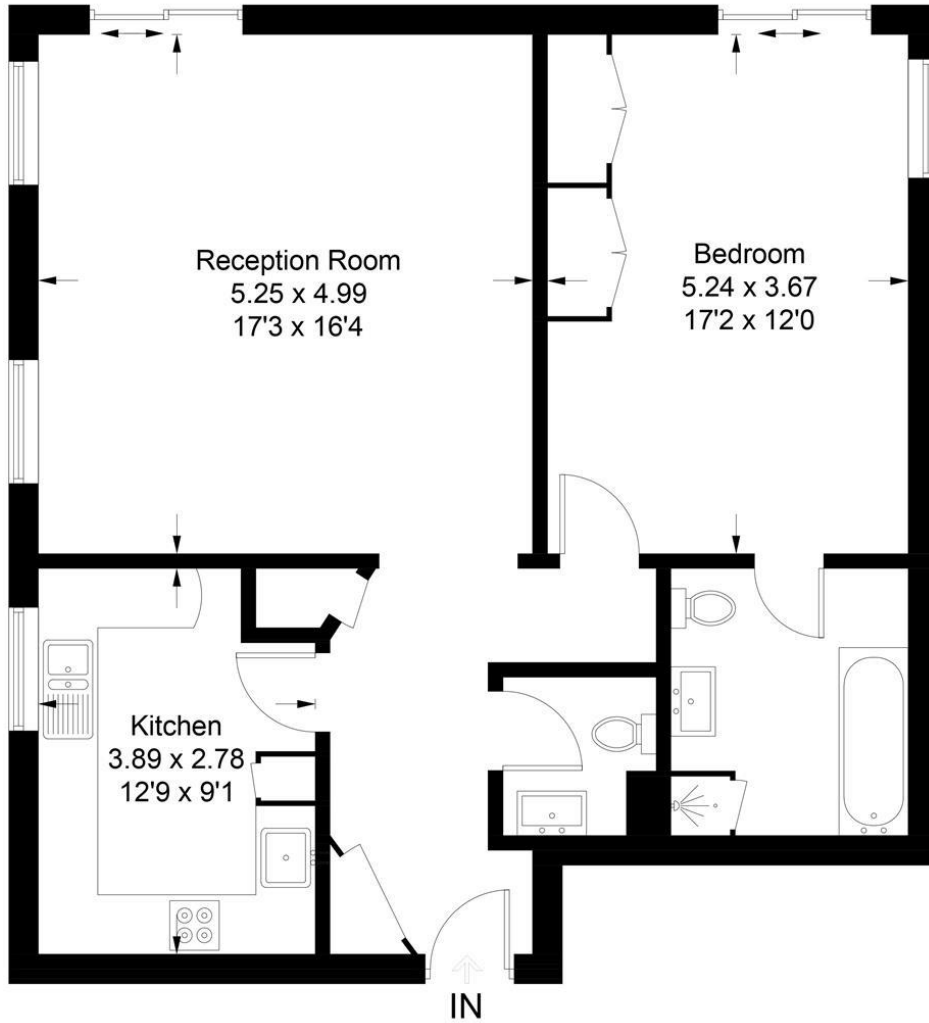
Further benefits include the fantastic communal gardens, gym facility, secure phone entry, lock up storage and bike storage and allocated underground parking. If you would like to view, please contact Brinkley's Estate Agents on 0208 944 2918. Sole Agents.

EPC: C



The Downs, SW20

Approximate Gross Internal Area = 78.0 sq m / 839 sq ft



Ground Floor

Illustration for identification purposes only, measurements are approximate, not to scale. FloorplansUsketch.com © 2018 (ID 424120)

