



Flat, Coombe Lane, Raynes Park
£1,350 pcm

Summary

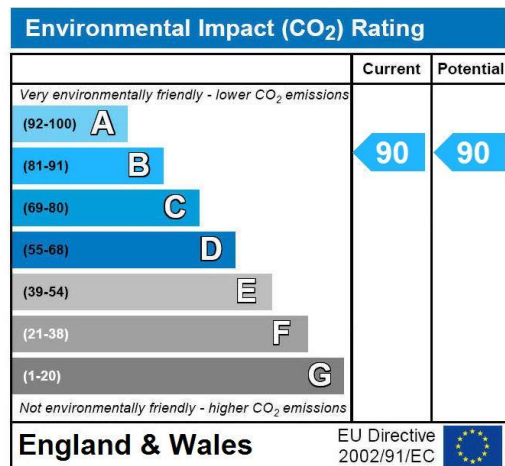
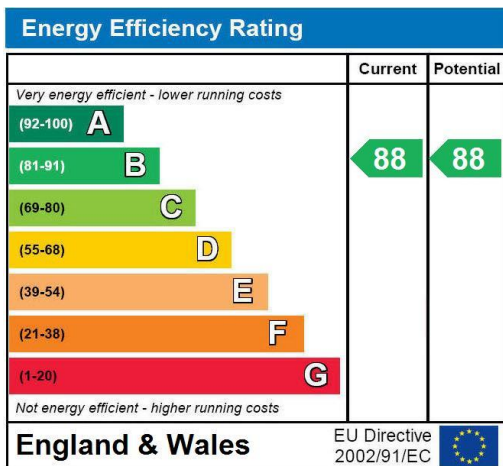
**** STUNNING MODERN BUILD ONE BEDROOM FLAT ****

Brinkley's Estate Agents are delighted to offer this first floor, one bedroom, modern-build apartment. Located right in the heart of Raynes Park centre, 0.1 miles from the mainline station. The property briefly comprises an open lounge / kitchen area, a high quality fitted kitchen with integrated appliances, a separate double bedroom and top-specification bathroom. Further benefits include a communal roof terrace, If you would like to view, please contact Brinkley's Estate Agents on 0208 944 2918. Sole Agents.

Energy Efficiency Rating: B

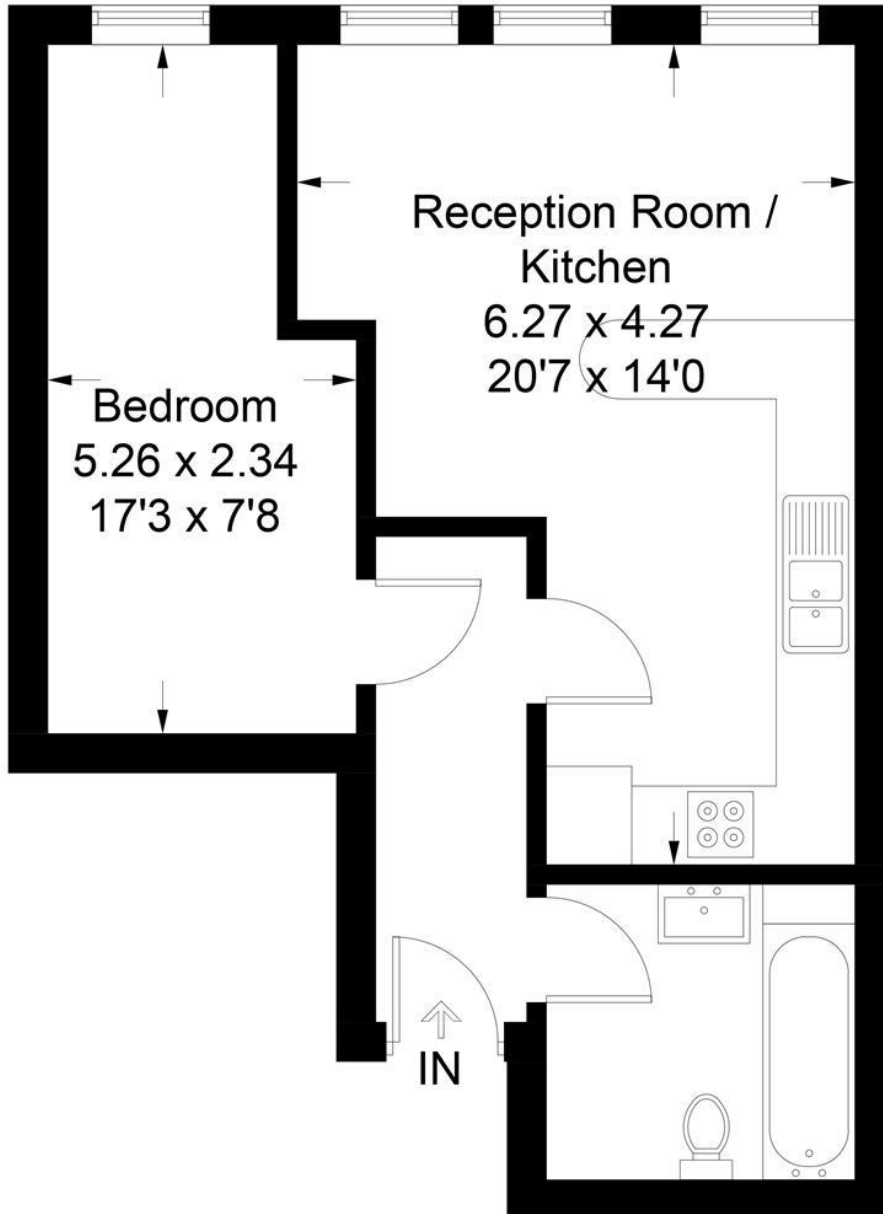


These particulars are intended to give a fair description of the property but their accuracy cannot be guaranteed, and they do not constitute an offer of contract. Intending purchasers must rely on their own inspection of the property. None of the above appliances/services have been tested by ourselves. We recommend purchasers arrange for a qualified person to check all appliances/services before legal commitment.



Coombe Lane, SW20

Approximate Gross Internal Area Total = 43.3 sq m / 466 sq ft



First Floor

Illustration for identification purposes only, measurements are approximate, not to scale. FloorplansUsketch.com © 2017 (ID339019)