



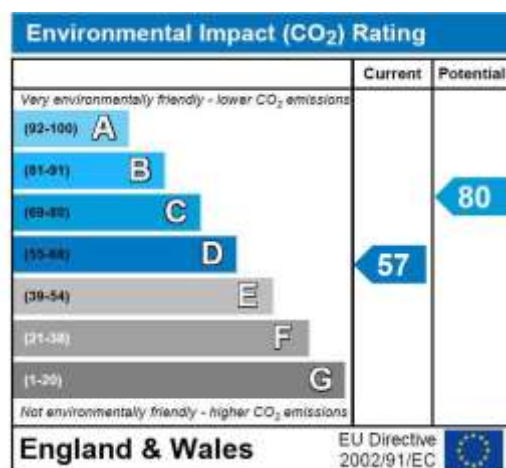
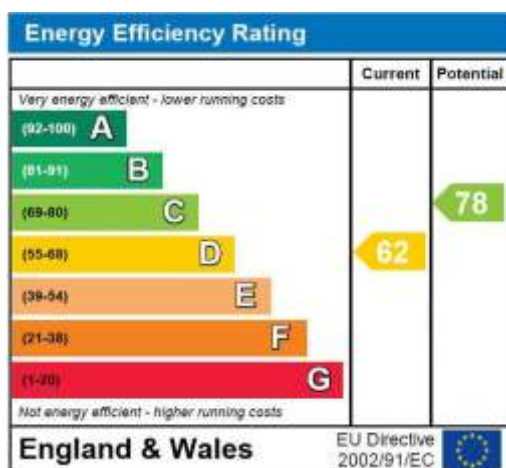
Flat, Innes Gardens, Putney

£400,000

Summary

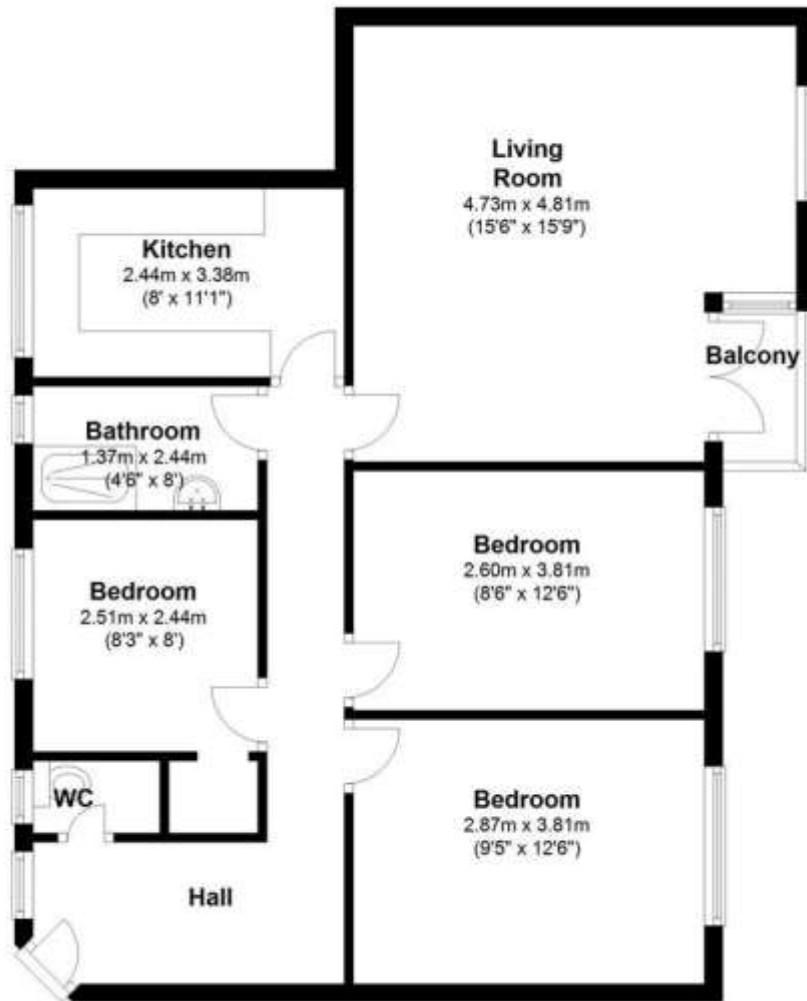
Brinkley's Estate Agents of Putney have the pleasure in offering to the market this, light and spacious, purpose-built apartment in a quiet, well maintained development right on the edge of Putney Heath. This Top/5th floor accommodation delivers three great sized, double bedrooms, a generously sized lounge/dining room, fitted kitchen and a bathroom with separate WC. The property benefits from stunning panoramic views across London, throughout, with added bonus features including the recently installed, double glazing, refurbished lift, a new boiler, private balcony, residents parking and well-maintained, communal gardens. The green open spaces of Putney Heath leading onto Wimbledon Common and Richmond Park are a few steps away and local buses, Putney High Street, Mainland Station, East Putney tube are also close by. If you would like to view, please contact us on 0208 785 3652. Sole Agents

Energy Efficiency Rating: D



Top Floor

Approx. 73.6 sq. metres (791.9 sq. feet)



Total area: approx. 73.6 sq. metres (791.9 sq. feet)