



Maisonette, Victoria Drive, Southfields, Southfields
£1,950 pcm SHORT LET

Summary

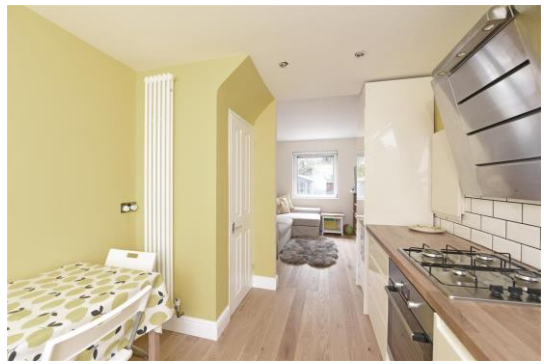
Short lets available 1-4 months call today.

Brinkley's Estate Agents are pleased to present this modern, three bedroom, maisonette to the market. The bedrooms, located on the first floor, are larger than average with built-in wardrobes and double glazed throughout. The bathroom is tiled throughout and is of the highest specification.

The ground floor has plenty of natural light with doors leading directly onto a private garden. The kitchen and open-plan lounge/dining area is ideal for entertaining. The flooring is solid oak throughout, not just standard laminate!

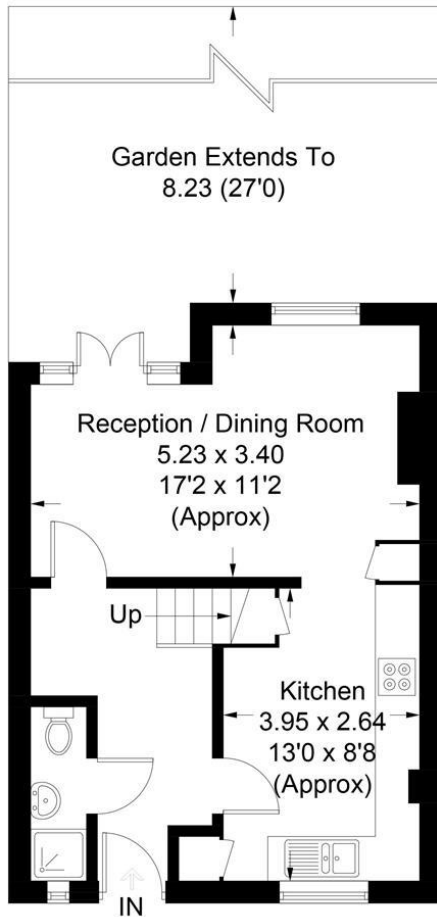
Southfields station and Village is a short walk away, many idyllic coffee shops and restaurants. The District Line is frequent and central London is easily accessible.

Please call our Putney branch on 02087853652 or our Wimbledon Park branch on 02088793718. Sole Agents.

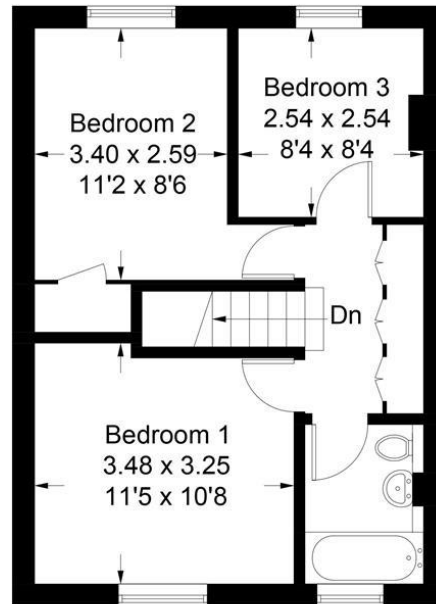


Victoria Drive, SW19

Approximate Gross Internal Area = 77.1 sq m / 830 sq ft



Ground Floor



First Floor

Illustration for identification purposes only, measurements are approximate, not to scale. FloorplansUsketch.com © 2018 (ID400271)

