



Maisonette, Frensham Drive, Roehampton

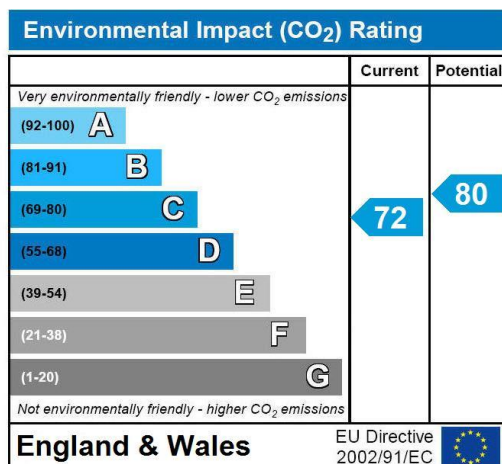
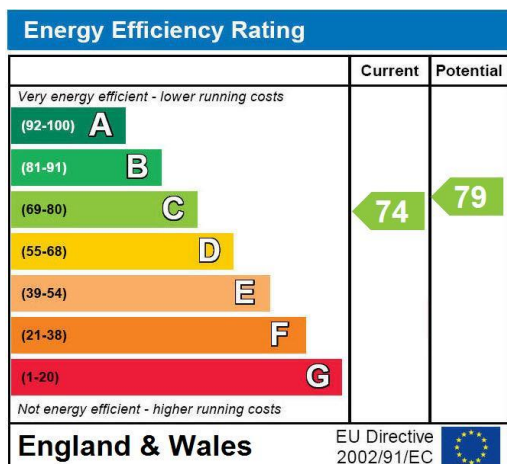
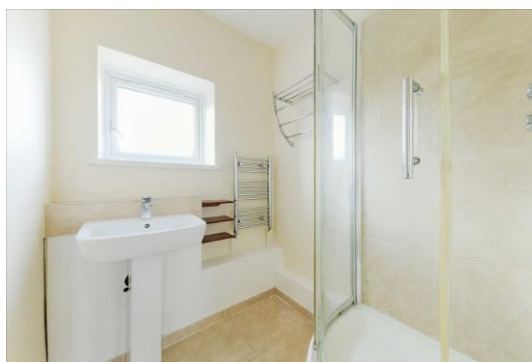
£1,650 pcm

Summary

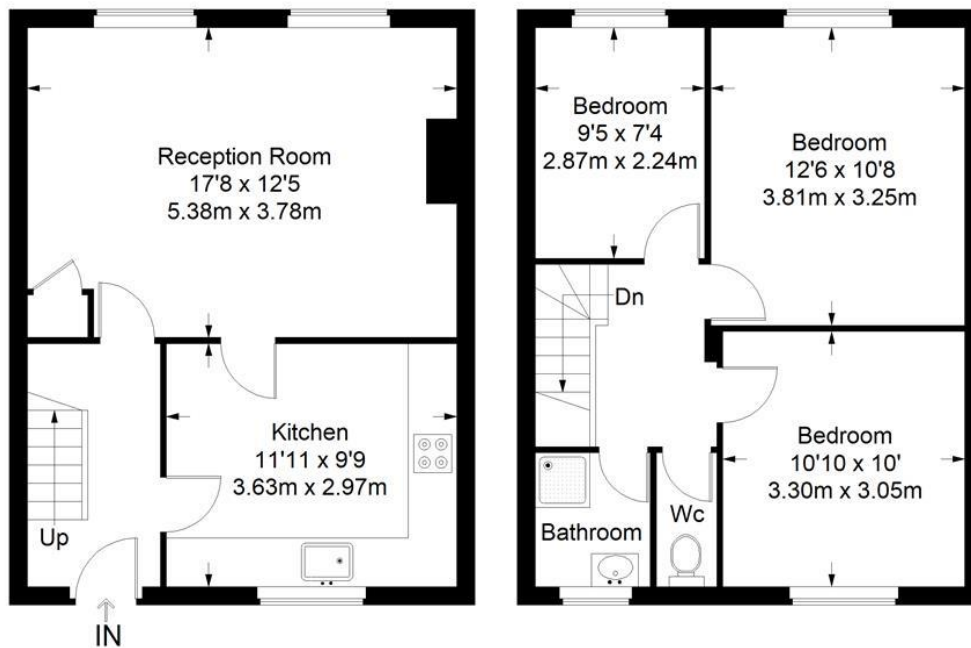
ABOUT THE PROPERTY: Brinkley's Estate Agents are pleased to offer this bright and spacious maisonette, located on the first and second floors of a well-maintained, purpose-built block in the popular, Putney Vale. Situated a short walk to ASDA Supermarket and local bus routes, giving easy access to Putney and Wimbledon. The green open spaces of Wimbledon Common and Richmond Park are right on your doorstep! Briefly comprising; entrance hall, reception room, kitchen/breakfast room, two double bedrooms, shower room and WC. Further benefits include double glazing and far reaching views towards Wimbledon Common. Available now as furnished.

HOW TO VIEW: Please call our Wimbledon Hill office on 020 8944 2918, our Wimbledon Park branch on 020 8879 3718 or our Putney office on 020 8785 3652, for more information and to arrange a viewing. Open 7 days a week. Viewings Mon- Fri 8-8, Weekends 9-6.

Energy Efficiency Rating: C



Frensham



Ground Floor = 380 sq ft

First Floor = 380 sq ft

Approximate Gross Internal Area
 GROUND FLOOR = 380 sq ft / 35.30 sq m
 FIRST FLOOR = 380 sq ft / 35.30 sq m
 Total = 760 sq ft / 70.60 sq m



This plan is for layout guidance only. Not drawn to scale unless stated. Windows and door openings are approximate. Whilst every care is taken in the preparation of this plan, please check all dimensions, shapes and compass bearings before making any decisions reliant upon them. (ID357409)