



The Gate House, Selhurst Close, Southfields  
**£900,000**

**Summary**

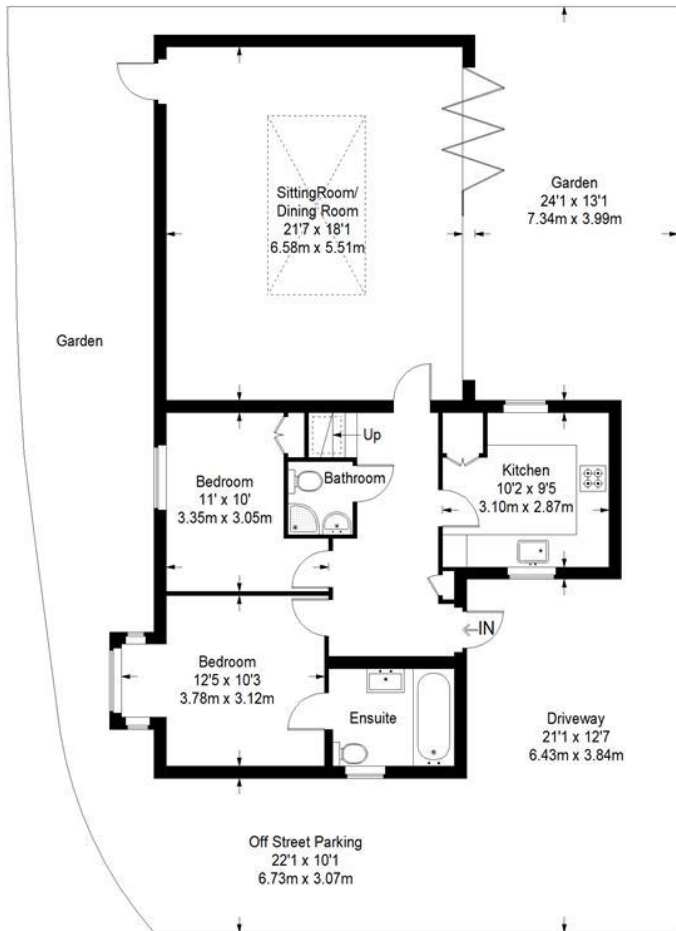
Situated in a highly regarded location with views towards Wimbledon Common over Parkside, a detached property, chalet style villa which is offered chain free. The property comprises a large open plan living room with a high vaulted ceiling and views to the patio and over the gardens, a fully fitted kitchen, four bedrooms and three bathrooms. The property has a secluded terraced garden to the rear, also side and front gardens as well as off street parking for two cars. Located close to Southfields tube station and Putney mainline station. Local amenities, shopping centres, restaurants and bars are all within easy access. Wimbledon is also home to the All England Lawn Tennis and Croquet Club, which hosts the world famous Wimbledon Open each summer.

How to view: Please contact our Wimbledon Hill office on 0208 944 2918, Wimbledon Park office on 0208 879 3718 or our Putney office on 0208 785 3652 for more information or to book a viewing. We are open from 8:30am - 7pm Monday to Friday and 9am - 6pm on weekends. Sole Agents.

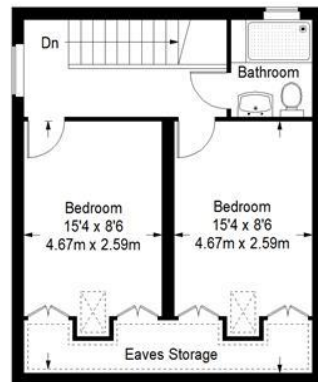





## The Gate House



Ground Floor = 899 sq ft



First Floor = 389 sq ft

 = Reduced headroom below 1.5 m / 5'0

Approximate Gross Internal Area  
 GROUND FLOOR (Excluding Reduced Headroom)= 899 sq ft / 83.52 sq m  
 FIRST FLOOR (Excluding Reduced Headroom)= 349 sq ft / 32.42 sq m  
 (Reduced Headroom)= 40 sq ft / 3.72sq m  
 Total = 1288 sq ft / 119.66 sq m

This plan is for layout guidance only. Not drawn to scale unless stated. Windows and door openings are approximate. Whilst every care is taken in the preparation of this plan, please check all dimensions, shapes and compass bearings before making any decisions reliant upon them. (ID357409)

